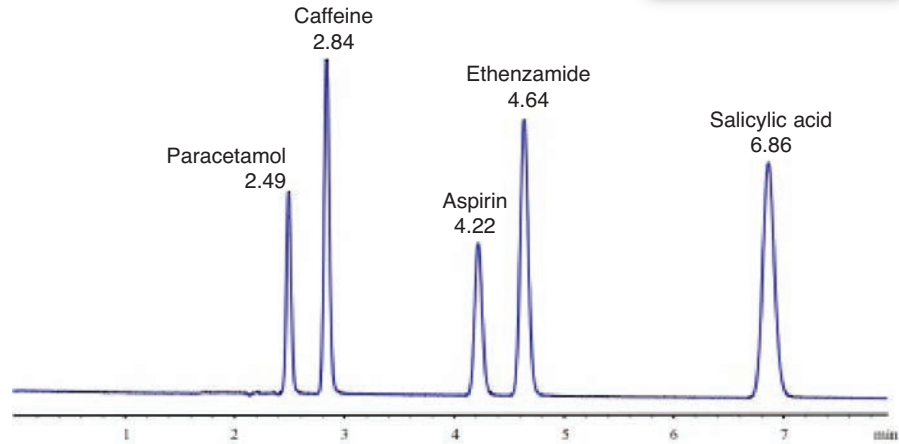


Components in Cold Medicine

Column: Quattro 5 C18; 250 x 4.6 mm
 Part Number: QU-5C18-25046
 Mobile Phase: 0.1 % Phosphoric acid in MeOH/H₂O (50:50 v/v)
 Flow Rate: 1.2mL/min
 Temperature: 40°C
 Inj. Vol.: 5µL
 Detection: 275nm



- Compounds
 1. Paracetamol
 2. Caffeine
 3. Aspirin
 4. Ethenzamide
 5. Salicylic acid



USP method for Ibuprofen – Oral Suspension (changed within USP limits)

Column: Quattro 3 C8; 50 x 4.6 mm
 Part Number: QU-3C8-05046
 Mobile Phase: 0.1 % Phosphoric acid in MeCN (55:45 v/v)
 Flow Rate: 2mL/min
 Temperature: 22°C
 Inj. Vol.: 2µL
 Detection: 220nm

- Compounds
 1. Benzophenone
 2. Ibuprofen

