

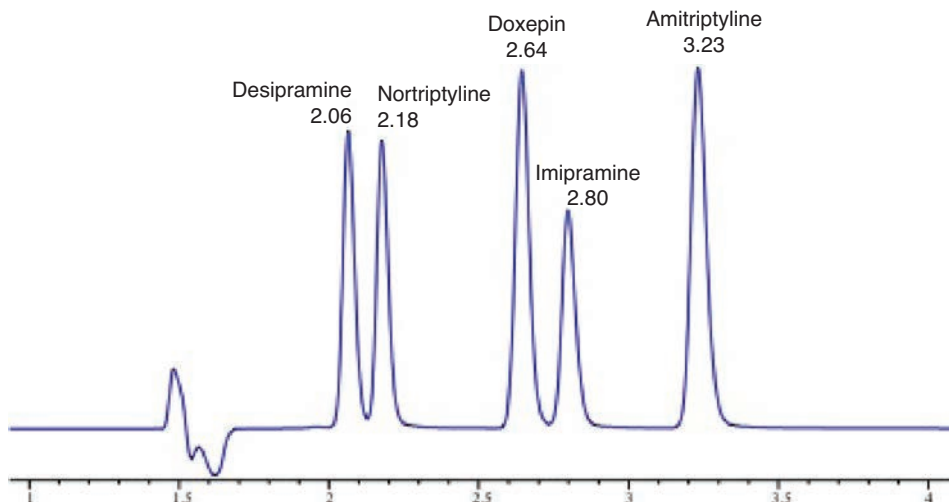
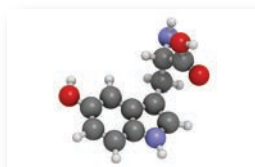
APPLICATIONS - QUATTRO

LC Columns

Tricyclic Antidepressants

Column: Quattro 5 C18, 250 x 4.6 mm
 Part Number: QU-5C18-25046
 Mobile Phase: 20 mM Ammoniumacetate, pH 6.3 in H₂O/ MeCN (35:65 v/v)
 Flow Rate: 1.5mL/min
 Temperature: 60°C
 Inj. Vol.: 10µL
 Detection: 215nm

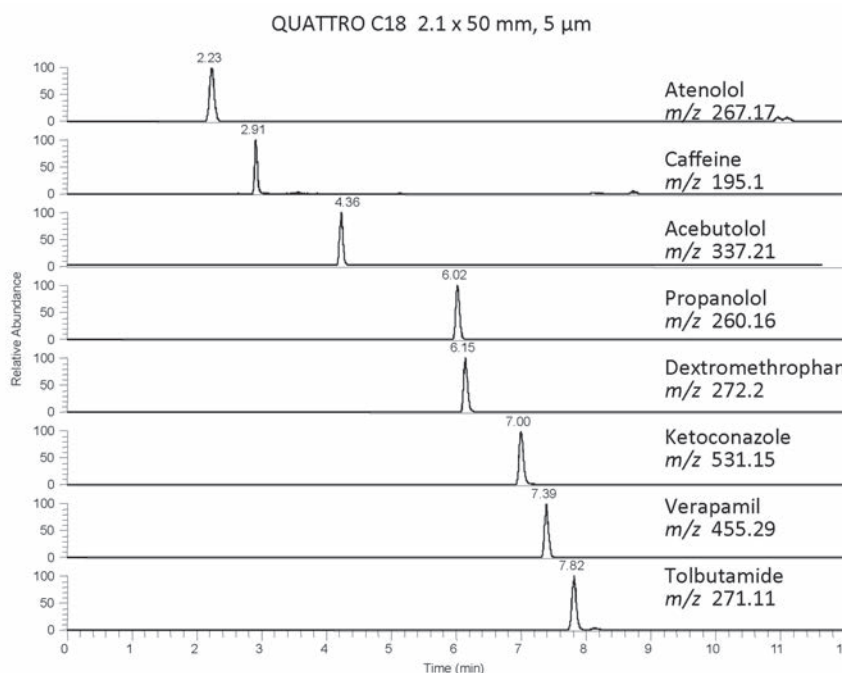
- Compounds
1. Desipramine
 2. Nortriptyline
 3. Doxepin
 4. Imipramine
 5. Amitriptyline



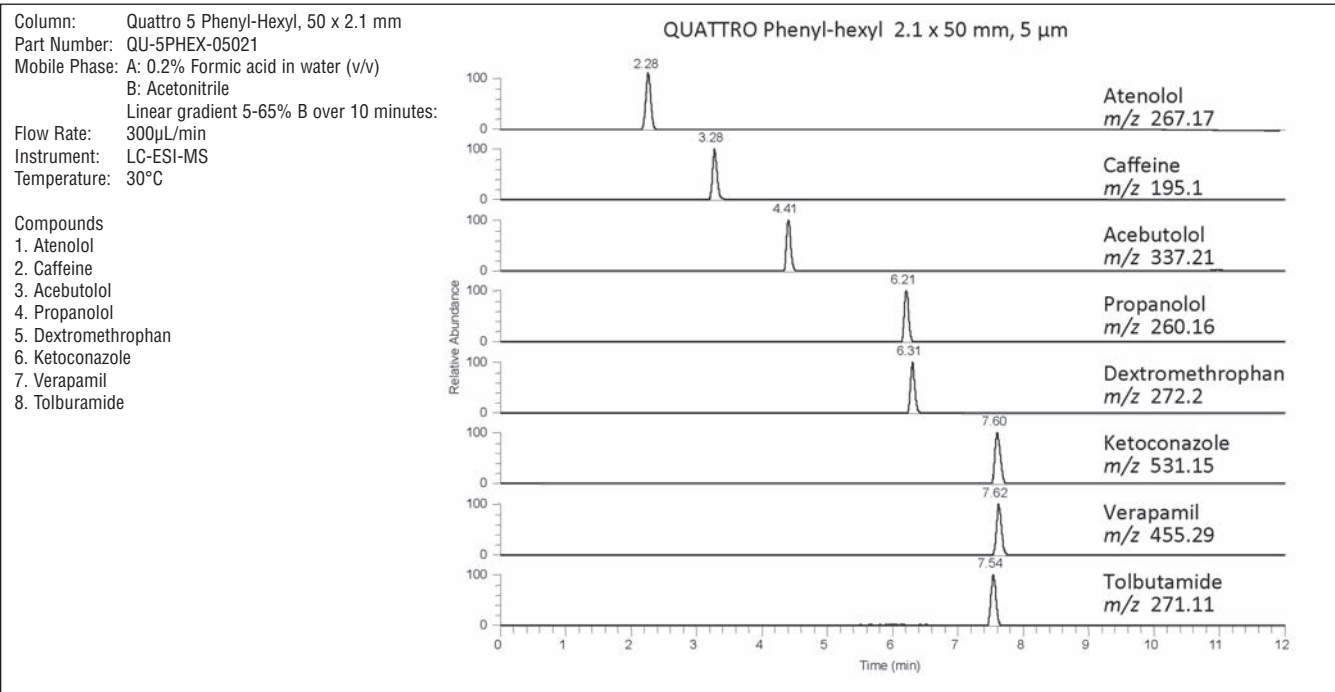
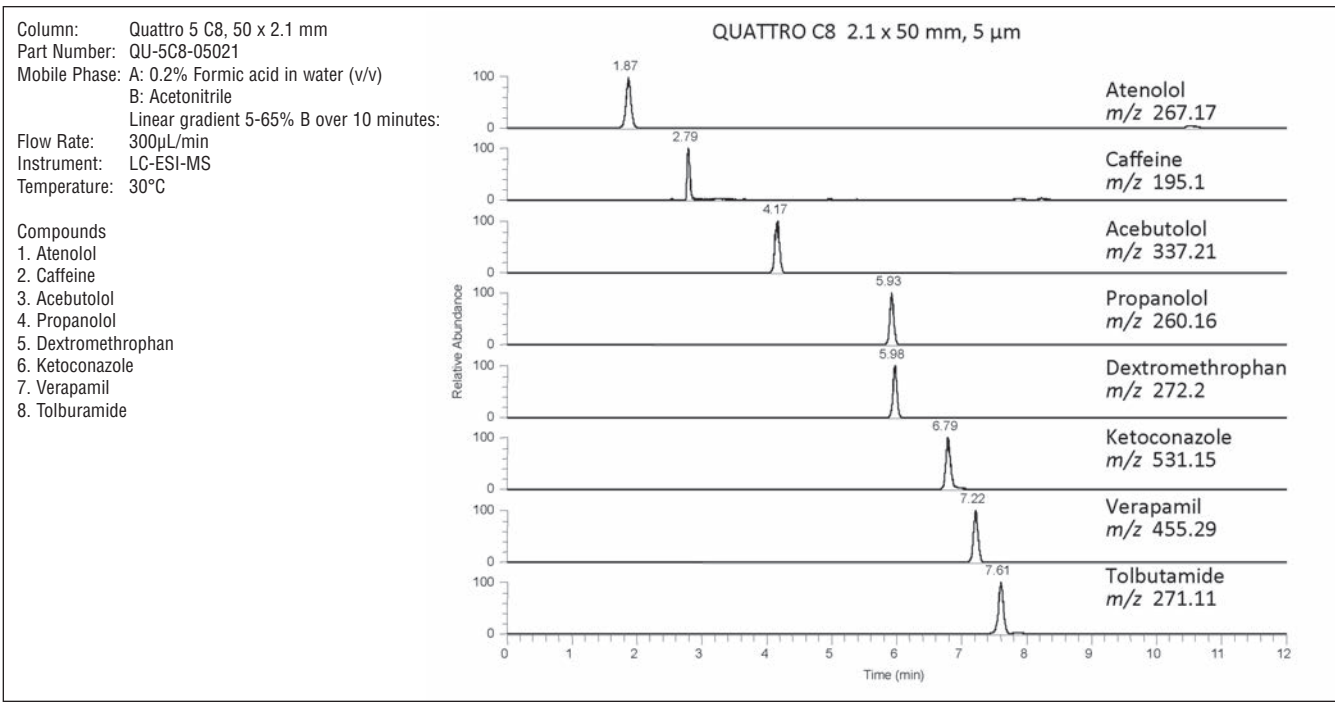
Quattro Bonded Phase Comparison Using Probe Drugs of Human CYP450 Metabolism under LC-MS Conditions

Column: Quattro 5 C18, 50 x 2.1 mm
 Part Number: QU-5C18-05021
 Mobile Phase: A: 0.2% Formic acid in water (v/v)
 B: Acetonitrile
 Linear gradient 5-65% B over 10 minutes:
 Flow Rate: 300µL/min
 Instrument: LC-ESI-MS
 Temperature: 30°C

- Compounds
1. Atenolol
 2. Caffeine
 3. Acebutolol
 4. Propranolol
 5. Dextromethoprophan
 6. Ketoconazole
 7. Verapamil
 8. Tolbutamide



APPLICATIONS - QUATTRO



APPLICATIONS - QUATTRO

LC Columns

