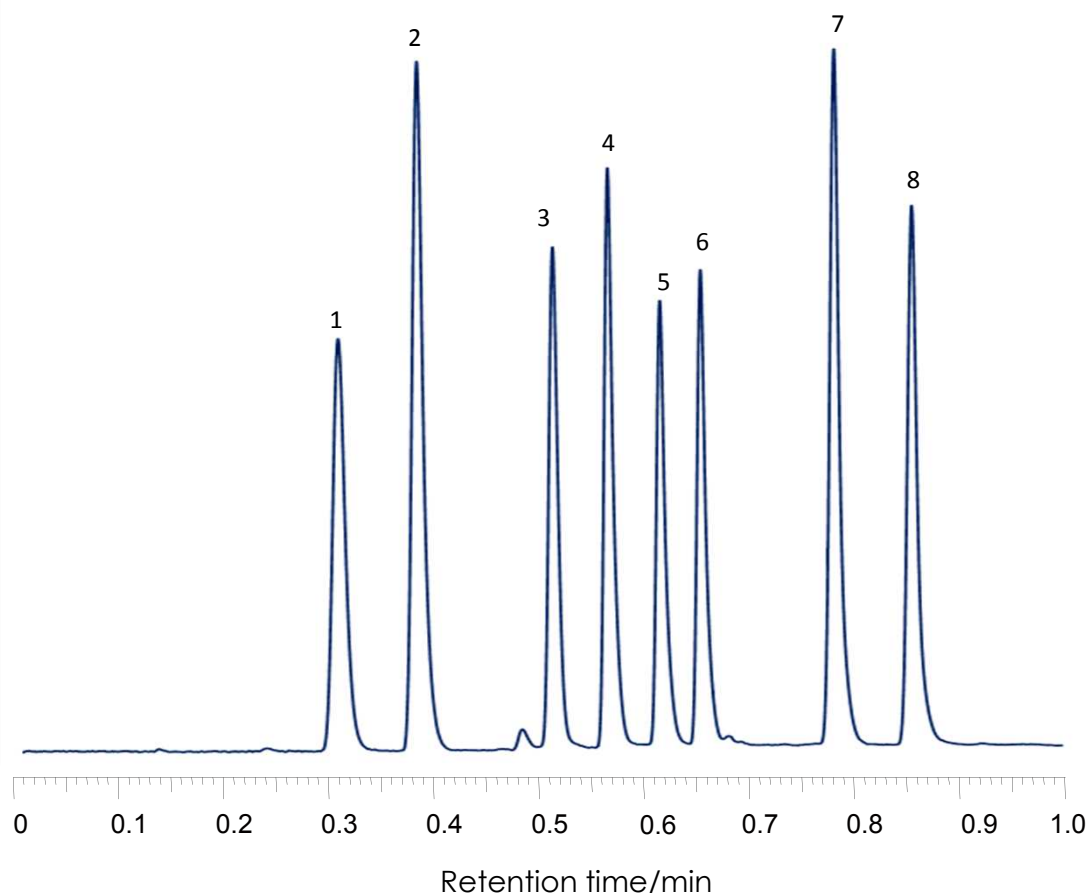


## SunShellカラムの高速分離

### High through-put separation

SunShell C18, 2.6 $\mu$ m 30 x 3.0 mm i.d.



Column: SunShell C18, 2.6 $\mu$ m, 30 x 3.0 mm.

Mobile phase: A) Water, B) Acetonitrile; Gradient (Acetonitrile %), 0.00 min - 35%, 0.40 min - 100%, 0.80 min - 100%, 0.85 min - 35%, 1 cycle; 1.8min, (High-pressure gradient).

Flow rate: 1.0 mL/min.

Temperature: 40 °C.

Injection Volume: 1  $\mu$ L.

Wavelength: 200 - 500nm, CH-9, 215 - 500nm (Max Abs.).

Sample: Mixture of ultraviolet absorbers,

1 = 2,2',4,4'-Tetrahydroxybenzophenone,

2 = Ethyl p-aminobenzoate,

3 = 2, 4-Dihydroxybenzophenone,

4 = 2,2'-Dihydroxy-4-methoxybenzophenone,

5 = 2,2'-Dihydroxy-4,4'-dimethoxybenzophenone,

6 = 2-Hydroxy-4-methoxybenzophenone,

7 = 2-(2'-Hydroxy-5'-methylphenyl) benzotriazole,

8 = 4-tert-Butylphenyl salicylate.

Courtesy of Jasco.