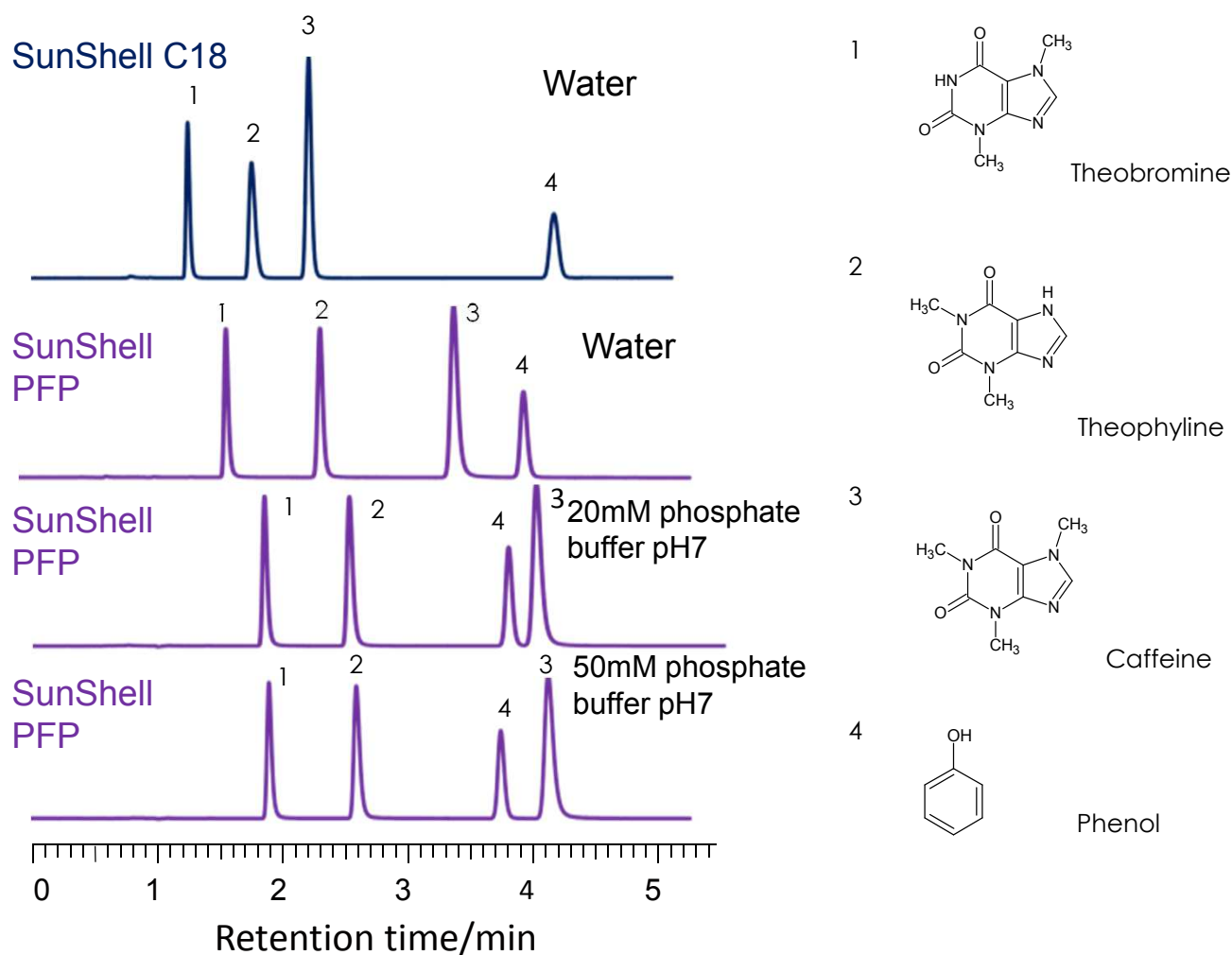


## キサンチン類の分離

### Xanthines

SunShell PFP 2.6  $\mu$ m, 150 x 4.6 mm i.d.



Column: SunShell C18, PFP 2.6  $\mu$ m 150 x 2.1 mm

Mobile phase: CH<sub>3</sub>OH/water or buffer=30/70

Flow rate: 0.3 mL/min

Temperature: 25 °C

Detection: UV@250nm

Sample: 1 = Theobromine, 2 = Theophylline

3 = Caffeine, 4 = Phenol