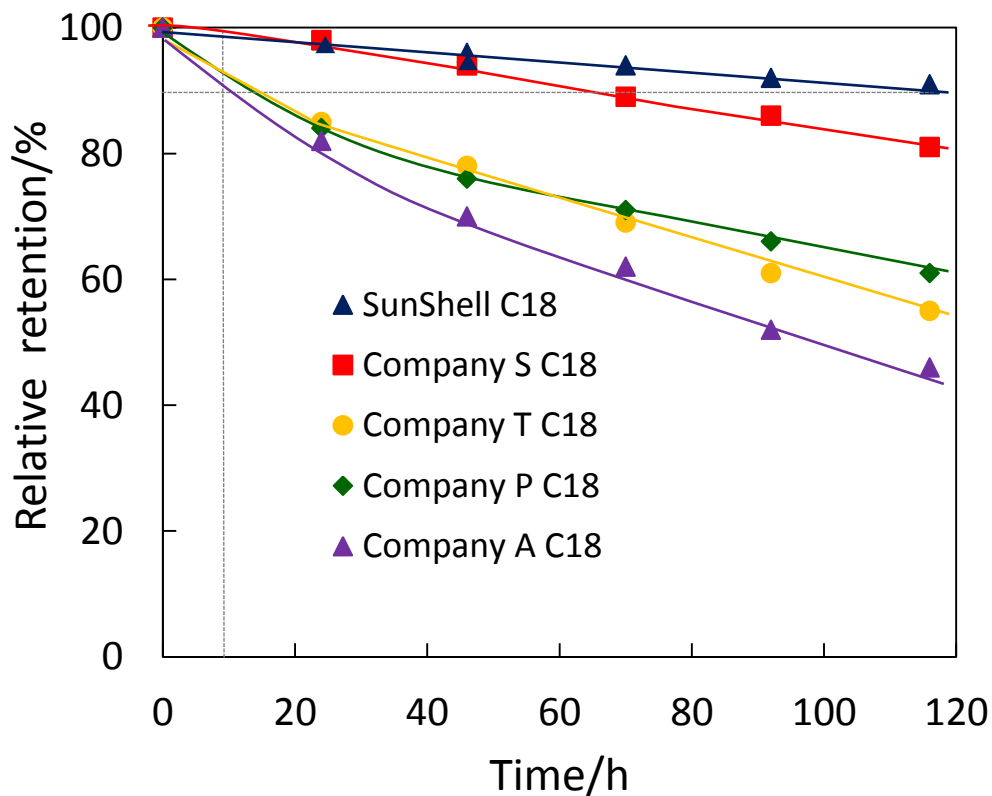


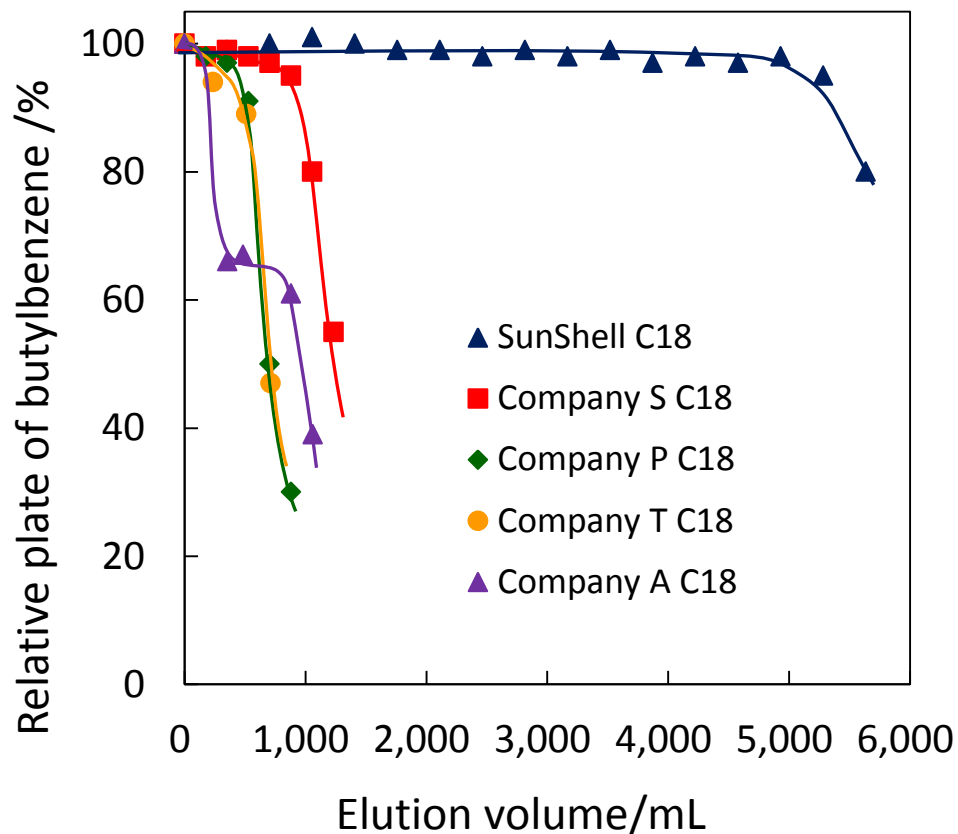
Stability under acidic pH condition



Durable test condition
 Column size: 50 x 2.1 mm
 Mobile phase: CH₃CN/1.0% TFA,
 pH1=10/90
 Flow rate: 0.4 mL/min
 Temperature: 80 °C

Measurement condition
 Column size: 50 x 2.1 mm
 Mobile phase: CH₃CN/H₂O=60/40
 Flow rate: 0.4 mL/min
 Temperature: 40 °C
 Sample: 1 = Uracil
 2 = Butylbenzene

Stability under basic pH condition



Durable test condition

Column size: 50 x 2.1 mm

Mobile phase:

CH₃OH/20mM Sodium borate/10mM NaOH=30/21/49 (pH10)

Flow rate: 0.4 mL/min

Temperature: 50 °C

Measurement condition

Column size: 50 x 2.1 mm

Mobile phase: CH₃OH/H₂O=70/30

Flow rate: 0.4 mL/min

Temperature: 40 °C

Sample: 1 = Butylbenzene