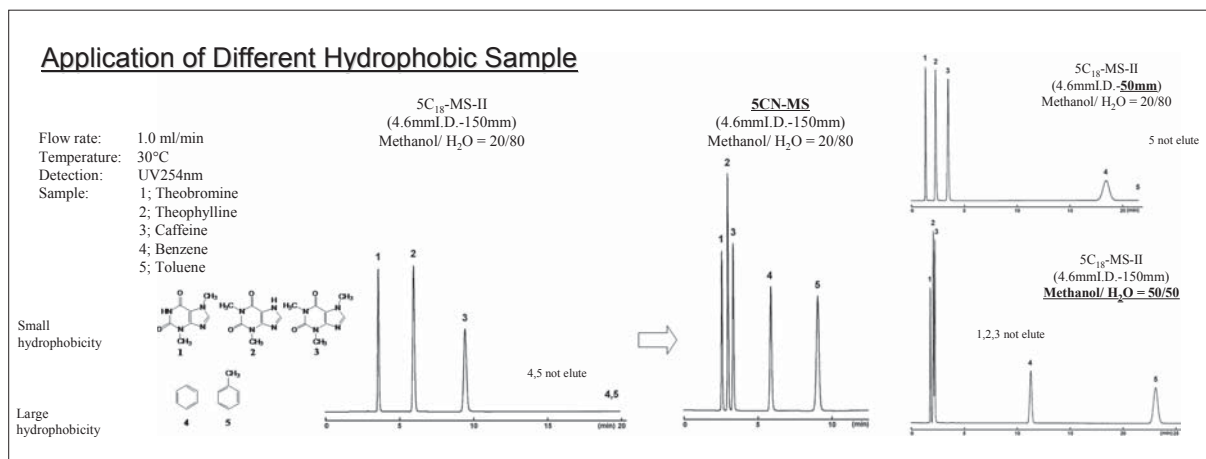


# COSMOSIL CN-MS

- Cyanopropyl group bonded stationary phase
- Enables separation of different hydrophobic samples without using gradient
- For separation of natural compounds with different hydrophobicity

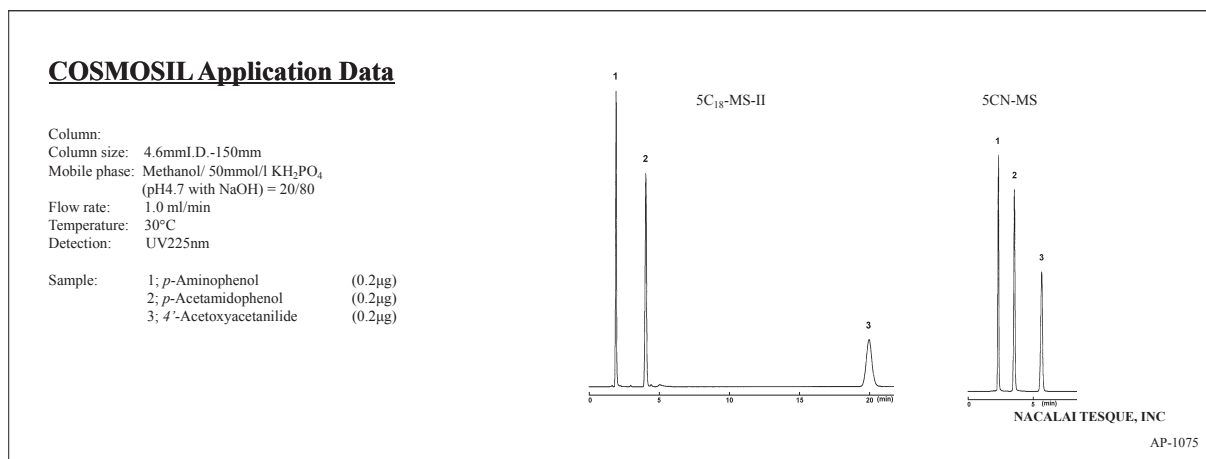
## Rapid Analysis

Gradient elution is commonly used for the samples containing both polar and non-polar compounds. However, gradient elution may cause reproducibility problem depending on the gradient mixer and pump, and need an equilibration time for each analysis. COSMOSIL 5CN-MS offers rapid analysis and great reproducibility using isocratic elution mode.



## Applications

- Acetoaminophen



## Ordering Information

- Analytical / Preparative Column (Particle Size: 5 μm)

COSMOSIL 5CN-MS Packed Column

Column Size I.D. x Length (mm)	Product Number
4.6 x 50	38233-61
4.6 x 100	38234-51
4.6 x 150	38235-41
4.6 x 250	38236-31

COSMOSIL 5CN-MS Guard Column

Column Size I.D. x Length (mm)	Product Number
6.0 x 150	38237-21
6.0 x 250	38238-11
10 x 250	38239-01
20 x 250	38240-61

Column Size I.D. x Length (mm)	Product Number
4.6 x 10	38231-81
10 x 20	38232-71