

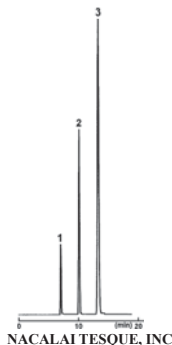
(2) Crude Drugs

● Bearberry Leaf

COSMOSIL Application Data

Column: 5C₁₈-PAQ
Column size: 4.6mmI.D.-250mm
Mobile phase: Methanol/ 1mmol/l HCl = 5/95
Flow rate: 1.0 ml/min
Temperature: 30°C
Detection: UV280nm

Sample: 1; Arbutin (5.0µg)
2; Hydroquinone (5.0µg)
3; Gallic Acid (5.0µg)



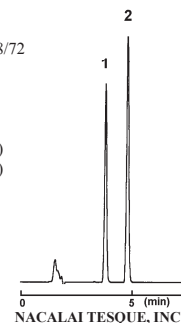
AP-0906

● Scutellaria Root

COSMOSIL Application Data

Column: 5C₁₈-AR-II
Column size: 4.6mmI.D.-150mm
Mobile phase: Acetonitrile/ 0.68% Phosphoric Acid = 28/72
Flow rate: 1.0 ml/min
Temperature: 50°C
Detection: UV277nm

Sample: 1; Baicalin (0.1µg)
2; Methyl *p*-Hydroxybenzoate (0.2µg)



AP-1134

● Phellodendron Bark

COSMOSIL Application Data

Column: 5C₁₈-PAQ
Column size: 4.6mmI.D.-250mm
Mobile phase: Acetonitrile/ 5.9mmol/l Sodium Lauryl Sulfate,
25mmol/l KH₂PO₄ = 50/50
Flow rate: 1.0 ml/min
Temperature: 40°C
Detection: UV345nm

Sample: 1; Palmatine (1.0µg)
2; Berberine (1.0µg)



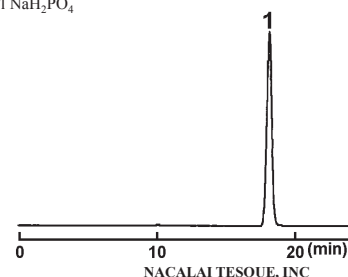
AP-0964

● Pueraria Root

COSMOSIL Application Data

Column: 5C₁₈-MS-II
Column size: 4.6mmI.D.-150mm
Mobile phase: Acetonitrile/ 50mmol/l NaH₂PO₄
= 10/90
Flow rate: 0.5 ml/min
Temperature: 40°C
Detection: UV250nm

Sample: 1; Puerarin (1.3µg)



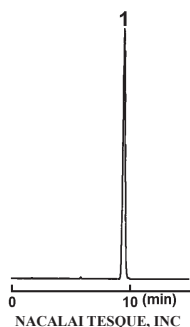
AP-0969

● Kamishoyosan Extract

COSMOSIL Application Data

Column: 5C₁₈-AR-II
Column size: 4.6mmI.D.-150mm
Mobile phase: Acetonitrile/ 0.11% H₃PO₄ = 10/90
Flow rate: 1.0 ml/min
Temperature: 40°C
Detection: UV240nm

Sample: 1; Geniposide (1.2µg)



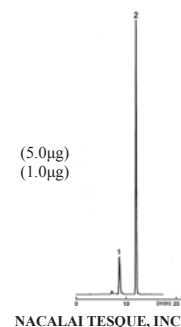
AP-0942

● Glycyrrhiza

COSMOSIL Application Data

Column: 5C₁₈-AR-II
Column size: 4.6mmI.D.-250mm
Mobile phase: Acetonitrile/ 2% H₃PO₄ = 40/60
Flow rate: 1.0 ml/min
Temperature: 30°C
Detection: UV254nm

Sample: 1; Glycyrrhizic Acid [Glycyrrhizin] (5.0µg)
2; *n*-Propyl *p*-Hydroxybenzoate (1.0µg)



AP-0927

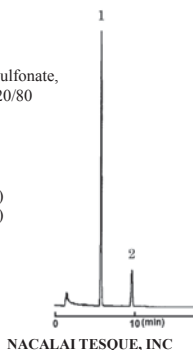
(2) Crude Drugs

● Dried Yeast

COSMOSIL Application Data

Column: 5C₁₈-PAQ
Column size: 4.6mmI.D.-150mm
Mobile phase: Acetonitrile/ 9.2mmol/l Sodium *I*-Octanesulfonate,
20mmol/l KH₂PO₄(pH3.5 with H₃PO₄) = 20/80
Flow rate: 1.0 ml/min
Temperature: 40°C
Detection: UV254nm

Sample: 1; Vitamin B₁ [Thiamine] (0.10μg)
2; Phenacetin (0.06μg)



NACALAI TESQUE, INC

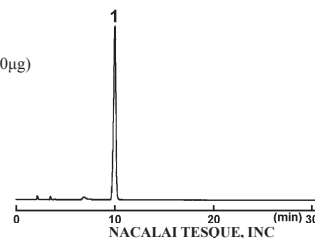
AP-0919

● Keishibukuryougan Extract

COSMOSIL Application Data

Column: 5C₁₈-MS-II
Column size: 4.6mmI.D.-150mm
Mobile phase: Methanol/ 50mmol/l NaH₂PO₄ = 1/5
Flow rate: 0.8 ml/min
Temperature: 45°C
Detection: UV210nm

Sample: 1; *D*-(-)-Amygdalin (2.0μg)



NACALAI TESQUE, INC

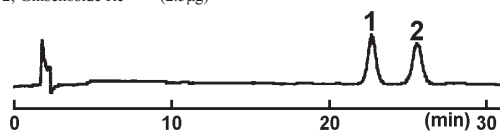
AP-0944

● Red Ginseng and Ginseng

COSMOSIL Application Data

Column: 5C₁₈-PAQ
Column size: 4.6mmI.D.-150mm
Mobile phase: Acetonitrile/ H₂O = 20/80
Flow rate: 1.0 ml/min
Temperature: 30°C
Detection: UV203nm

Sample: 1; Ginsenoside Rg1 (2.5μg)
2; Ginsenoside Re (2.5μg)



NACALAI TESQUE, INC

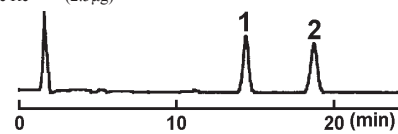
AP-0922

● Red Ginseng and Ginseng

COSMOSIL Application Data

Column: 5C₁₈-MS-II
Column size: 4.6mmI.D.-150mm
Mobile phase: Acetonitrile/ H₂O = 30/70
Flow rate: 1.0 ml/min
Temperature: 40°C
Detection: UV203nm

Sample: 1; Ginsenoside Rb1 (2.5μg)
2; Ginsenoside Rc (2.5μg)



NACALAI TESQUE, INC

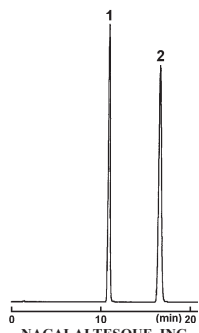
AP-0923

● Magnolia Bark

COSMOSIL Application Data

Column: 5C₁₈-AR-II
Column size: 4.6mmI.D.-150mm
Mobile phase: Acetonitrile/ 2%Acetic Acid = 50/50
Flow rate: 1.0 ml/min
Temperature: 30°C
Detection: UV289nm

Sample: 1; Honokiol (1.0μg)
2; Magnolol (1.0μg)



NACALAI TESQUE, INC

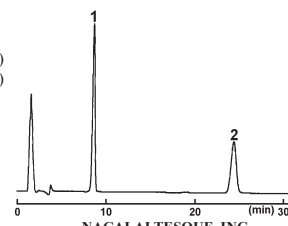
AP-0948

● Bupleurum Root

COSMOSIL Application Data

Column: 5C₁₈-MS-II
Column size: 4.6mmI.D.-150mm
Mobile phase: Acetonitrile/ H₂O = 40/60
Flow rate: 1.0 ml/min
Temperature: 50°C
Detection: UV206nm

Sample: 1; Saikosaponin a (1.0μg)
2; Saikosaponin d (1.0μg)



NACALAI TESQUE, INC

AP-0910

(2) Crude Drugs

● Saireito Extract

COSMOSIL Application Data

Column: 5C₁₈-MS-II
Column size: 4.6mmI.D.-150mm
Mobile phase: Acetonitrile/ 50mmol/l NaH₂PO₄ = 3/5
Flow rate: 1.0 ml/min
Temperature: 40°C
Detection: UV254nm

Sample: 1; Saikosaponin b₂ (1.0µg)



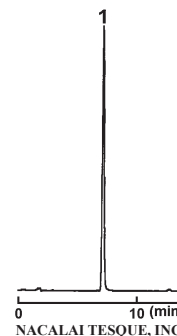
NACALAI TESQUE, INC
AP-0978

● Saireito Extract

COSMOSIL Application Data

Column: 5C₁₈-MS-II
Column size: 4.6mmI.D.-150mm
Mobile phase: Acetonitrile/ 0.5%H₃PO₄ = 24/76
Flow rate: 1.0 ml/min
Temperature: 40°C
Detection: UV277nm

Sample: 1; Baicalin (0.5µg)



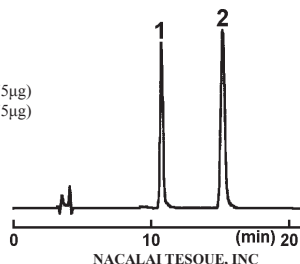
NACALAI TESQUE, INC
AP-0981

● Powdered Gardenia Fruit

COSMOSIL Application Data

Column: 5C₁₈-MS-II
Column size: 4.6mmI.D.-150mm
Mobile phase: Acetonitrile/ H₂O = 60/40
Flow rate: 0.5 ml/min
Temperature: 30°C
Detection: UV240nm

Sample: 1; Caffeine (0.175µg)
2; Geniposide (0.175µg)



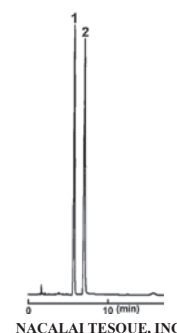
NACALAI TESQUE, INC
AP-0966

● Peony Root

COSMOSIL Application Data

Column: 5C₁₈-AR-II
Column size: 4.6mmI.D.-150mm
Mobile phase: Acetonitrile/ 0.12%H₃PO₄ = 15/85
Flow rate: 1.0 ml/min
Temperature: 30°C
Detection: UV232nm

Sample: 1; Albiflorin (1.0µg)
2; Paeoniflorin (1.0µg)



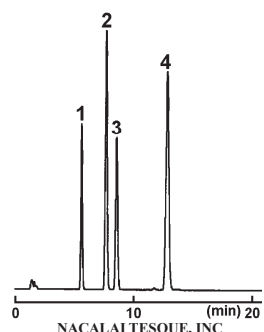
NACALAI TESQUE, INC
AP-0960

● Toad Venom

COSMOSIL Application Data

Column: 5C₁₈-AR-II
Column size: 4.6mmI.D.-150mm
Mobile phase: Acetonitrile/ 0.1%H₃PO₄ = 45/55
Flow rate: 1.0 ml/min
Temperature: 40°C
Detection: UV300nm

Sample: 1; Bufalin (0.4µg)
2; Cinobufagin (0.4µg)
3; Resibufogenin (0.6µg)
4; Indometacin[Indomethacin](0.6µg)



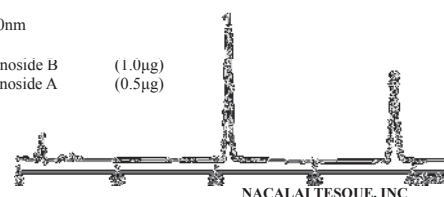
NACALAI TESQUE, INC
AP-1000

● Senna Leaf

COSMOSIL Application Data

Column: 5C₁₈-MS-II
Column size: 4.6mmI.D.-250mm
Mobile phase: 5mmol/l Tetra-*n*-heptylammonium Bromide-
Acetonitrile/ 0.1mol/l Acetic Acid,
1% Sodium Acetate(pH5.0) = 32/68
Flow rate: 1.0 ml/min
Temperature: 50°C
Detection: UV340nm

Sample: 1; Sennoside B (1.0µg)
2; Sennoside A (0.5µg)



NACALAI TESQUE, INC
AP-0993

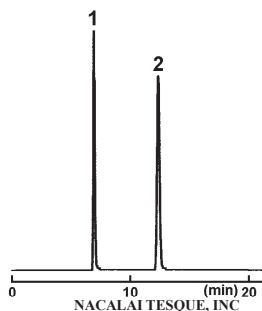
(2) Crude Drugs

● Swertia Herb

COSMOSIL Application Data

Column: 5C₁₈-MS-II
Column size: 4.6mmI.D.-150mm
Mobile phase: Acetonitrile/ H₂O = 10/90
Flow rate: 0.5 ml/min
Temperature: 50°C
Detection: UV238nm

Sample: 1; Theophylline (1.0µg)
2; Swertiamarin (1.0µg)



AP-0996

● Rhubarb

COSMOSIL Application Data

Column: 5C₁₈-MS-II
Column size: 4.6mmI.D.-150mm
Mobile phase: Acetonitrile/ 1.25%Acetic Acid = 20/80
Flow rate: 0.5 ml/min
Temperature: 40°C
Detection: UV340nm

Sample: 1; Sennoside A (2.0µg)
2; Naringin (2.0µg)



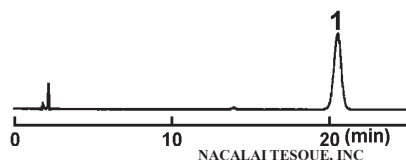
AP-0972

● Daikokanzoto Extract

COSMOSIL Application Data

Column: 5C₁₈-PAQ
Column size: 4.6mmI.D.-150mm
Mobile phase: Acetonitrile/ 0.04%H₃PO₄ = 540/2460
Flow rate: 1.0 ml/min
Temperature: 30°C
Detection: UV340nm

Sample: 1; Sennoside A (0.26µg)



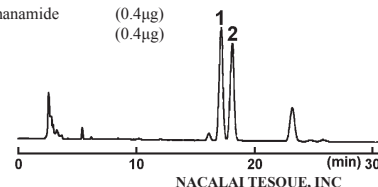
AP-0916

● Capsicum

COSMOSIL Application Data

Column: 5PE-MS
Column size: 4.6mmI.D.-250mm
Mobile phase: Acetonitrile/ 0.1%H₃PO₄ = 40/60
Flow rate: 1.0 ml/min
Temperature: 30°C
Detection: UV281nm

Sample: 1; *N*-Vanillylnonanamide (0.4µg)
2; Capsaicin (0.4µg)



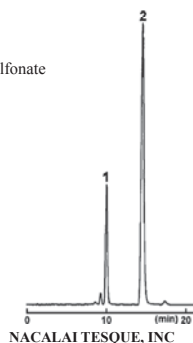
AP-0913

● Ipecac

COSMOSIL Application Data

Column: 5C₁₈-MS-II
Column size: 4.6mmI.D.-150mm
Mobile phase: Methanol/ 20mmol/l Sodium *I*-Heptanesulfonate (pH4.0 with Acetic Acid) = 50/50
Flow rate: 1.0 ml/min
Temperature: 50°C
Detection: UV283nm

Sample: 1; Cephaeline (2.0µg)
2; Emetine (0.5µg)



AP-0938

● Belladonna Root

COSMOSIL Application Data

Column: 5C₁₈-PAQ
Column size: 4.6mmI.D.-150mm
Mobile phase: Acetonitrile/ 50mmol/l KH₂PO₄, 1%Triethylamine(pH3.5 with H₃PO₄) = 10/90
Flow rate: 1.0 ml/min
Temperature: 30°C
Detection: UV210nm

Sample: 1; Atropine (2.0µg)
2; Brucine (0.5µg)



AP-0909

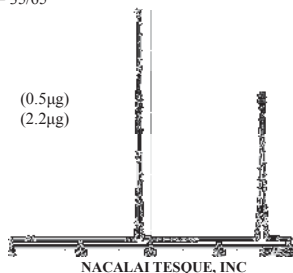
(2) Crude Drugs

● Moutan Bark

COSMOSIL Application Data

Column: 5C₁₈-MS-II
Column size: 4.6mmI.D.-250mm
Mobile phase: Acetonitrile/ 3.1%Acetic Acid = 35/65
Flow rate: 1.0 ml/min
Temperature: 30°C
Detection: UV274nm

Sample: 1; Paconol (0.5µg)
2; Butyl *p*-Hydroxybenzoate (2.2µg)



NACALAI TESQUE, INC

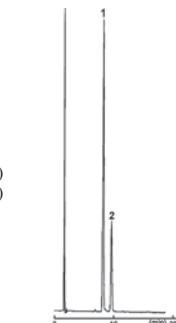
AP-0950

● Hochuekkito Extract

COSMOSIL Application Data

Column: 5C₁₈-AR-II
Column size: 4.6mmI.D.-150mm
Mobile phase: Acetonitrile/ 1.2% H_3PO_4 = 18/82
Flow rate: 1.0 ml/min
Temperature: 40°C
Detection: UV285nm

Sample: 1; Naringin (0.1µg)
2; Vitamin P [Hesperidin] (0.1µg)



NACALAI TESQUE, INC

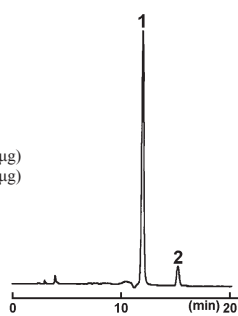
AP-0930

● Povidone

COSMOSIL Application Data

Column: 5C₈-MS
Column size: 4.6mmI.D.-250mm
Mobile phase: Methanol/ H_2O = 20/80
Flow rate: 1.0 ml/min
Temperature: 40°C
Detection: UV254nm

Sample: 1; *N*-Vinyl-2-Pyrrolidone (0.1µg)
2; Vinyl Acetate (5.0µg)



NACALAI TESQUE, INC

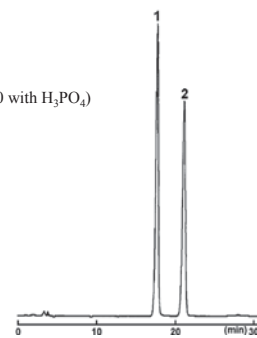
AP-0965

● Nux Vomica

COSMOSIL Application Data

Column: 5C₁₈-PAQ
Column size: 4.6mmI.D.-150mm
Mobile phase: Acetonitrile/ 50mmol/l KH_2PO_4 ,
1.11%Triethylamine = 10/90(pH3.0 with H_3PO_4)
Flow rate: 0.5 ml/min
Temperature: 30°C
Detection: UV210nm

Sample: 1; Strychnine (0.8µg)
2; Barbital (1.1µg)



NACALAI TESQUE, INC

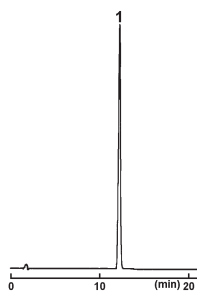
AP-0958

● Ryokeijutukanto Extract

COSMOSIL Application Data

Column: 5C₁₈-AR-II
Column size: 4.6mmI.D.-150mm
Mobile phase: Acetonitrile/ 0.13% H_3PO_4 = 25/75
Flow rate: 1.0 ml/min
Temperature: 40°C
Detection: UV273nm

Sample: 1; *trans*-Cinnamic Acid (0.1µg)



NACALAI TESQUE, INC

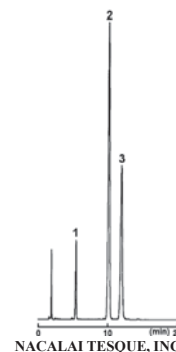
AP-0976

● Scopolia Rhizome and Scopolia Extract

COSMOSIL Application Data

Column: 5C₁₈-PAQ
Column size: 4.6mmI.D.-150mm
Mobile phase: Acetonitrile/ 50mmol/l KH_2PO_4 ,
0.1%Triethylamine(pH3.5 with H_3PO_4)
= 10/90
Flow rate: 1.0 ml/min
Temperature: 30°C
Detection: UV210nm

Sample: 1; Scopolamine (0.6µg)
2; Atropine Sulfate (2.0µg)
3; Brucine (0.4µg)



NACALAI TESQUE, INC

AP-0989