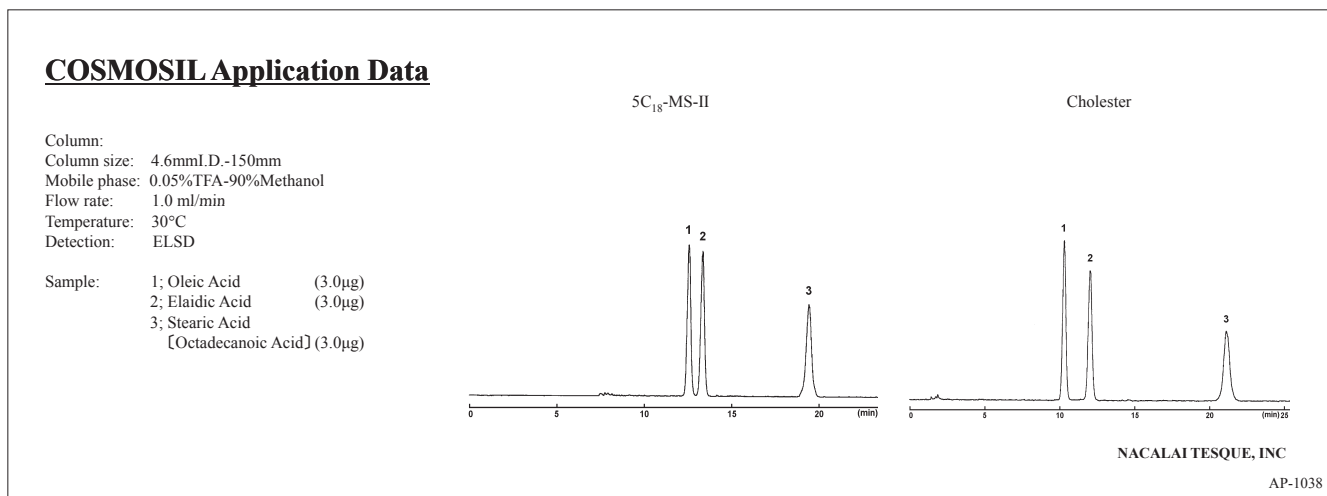
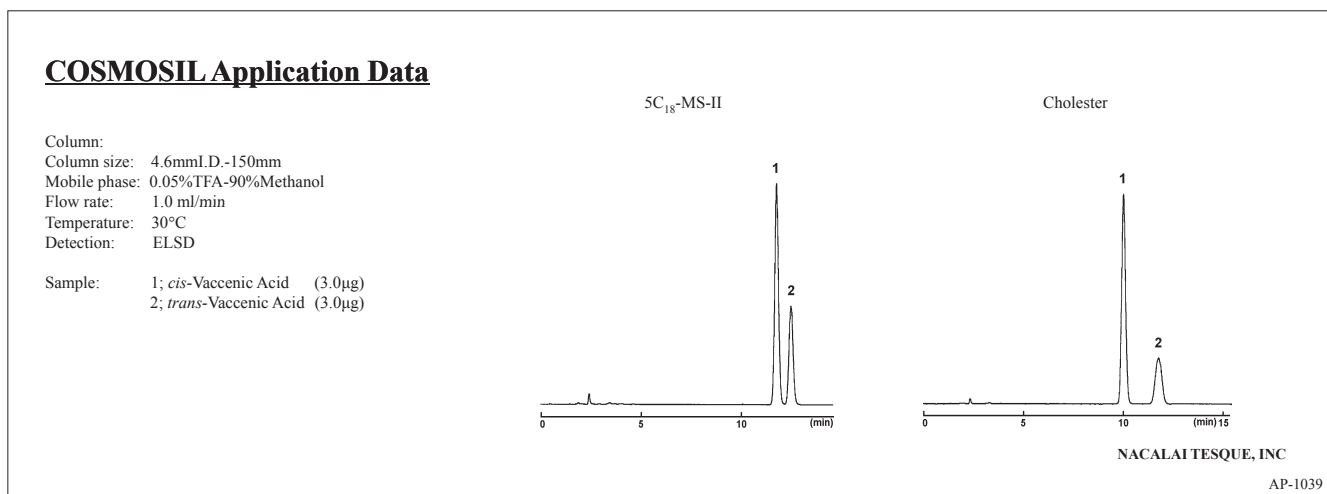


(9) Lipids

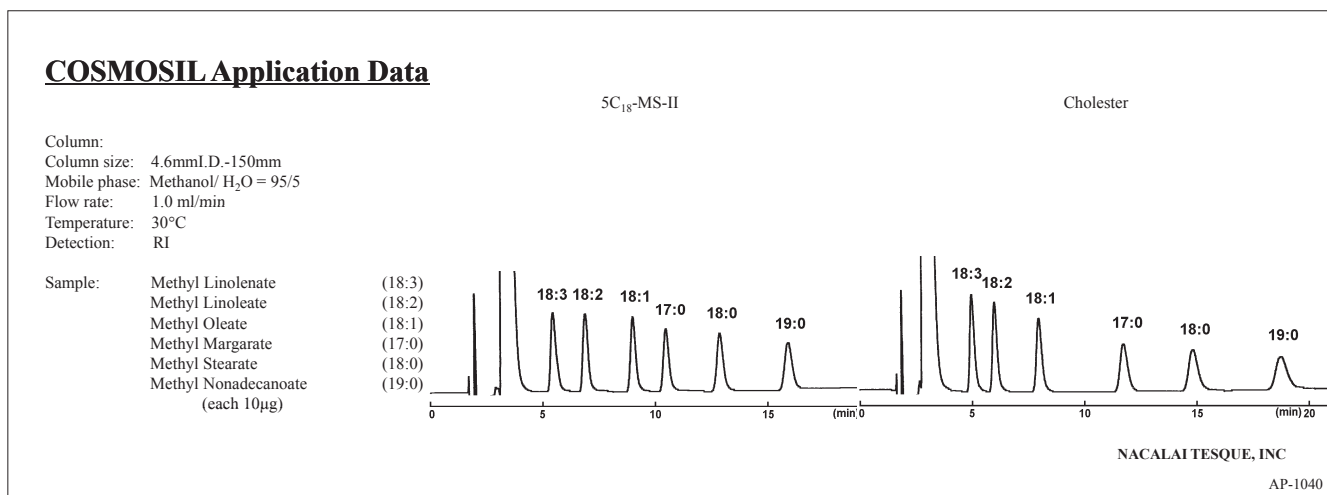
• Fatty Acids



• Fatty Acids



• Methylated Fatty Acids

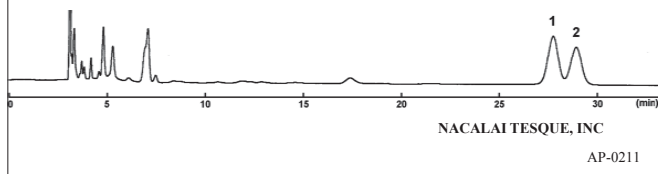


● Fatty Acid Derivatives

COSMOSIL Application Data

Column: Cholesterol
Column size: 4.6mmI.D.-250mm
Mobile phase: Methanol/ H₂O = 90/10
Flow rate: 1.0 ml/min
Temperature: 30°C
Detection: UV254nm

Sample: 1; Linolenic Acid *p*-Bromophenacyl Ester
2; γ -Linolenic Acid *p*-Bromophenacyl Ester

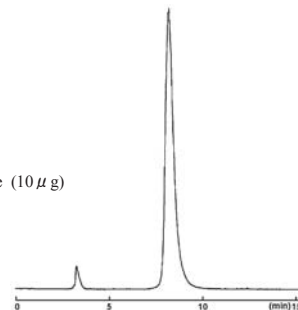


● Phosphatides

COSMOSIL Application Data

Column: 5SL-II
Column size: 4.6mmI.D.-250mm
Mobile phase: 0.05%TFA-Methanol
Flow rate: 1.0 ml/min
Temperature: 30°C
Detection: ELSD

Sample: *L*- α -Phosphatidyl Choline (10 μ g)

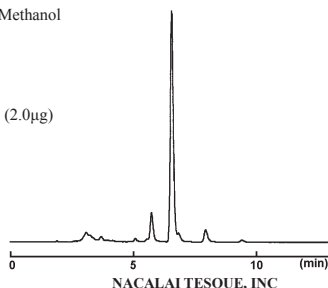


● Phosphatides

COSMOSIL Application Data

Column: 5C₁₈-MS-II
Column size: 4.6mmI.D.-250mm
Mobile phase: 0.05%TFA-10%THF/90%Methanol
Flow rate: 1.0 ml/min
Temperature: 30°C
Detection: ELSD

Sample: *L*- α -Phosphatidyl Choline (2.0 μ g)

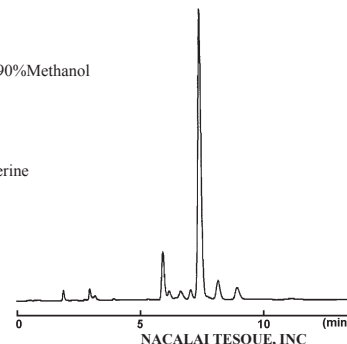


● Phosphatides

COSMOSIL Application Data

Column: 5C₁₈-MS-II
Column size: 4.6mmI.D.-250mm
Mobile phase: 0.05%TFA-10%THF/90%Methanol
Flow rate: 1.0 ml/min
Temperature: 30°C
Detection: ELSD

Sample: *L*- α -Phosphatidyl-L-serine

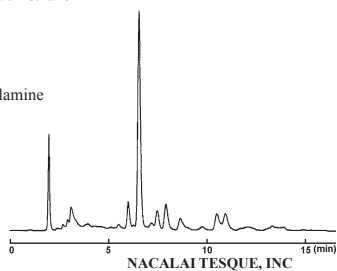


● Phosphatides

COSMOSIL Application Data

Column: 5C₁₈-MS-II
Column size: 4.6mmI.D.-250mm
Mobile phase: 0.05%TFA-10%THF/90%Methanol
Flow rate: 1.0 ml/min
Temperature: 30°C
Detection: ELSD

Sample: *L*- α -Phosphatidylethanolamine (8.0 μ g)

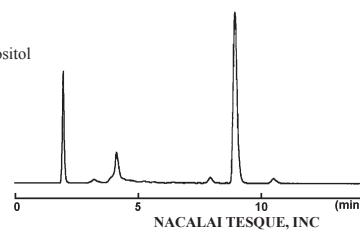


● Phosphatides

COSMOSIL Application Data

Column: 5C₁₈-MS-II
Column size: 4.6mmI.D.-250mm
Mobile phase: 0.05%TFA-10%THF/90%Methanol
Flow rate: 1.0 ml/min
Temperature: 30°C
Detection: ELSD

Sample: *L*- α -Phosphatidylinositol Sodium Salt



I. HPLC Columns

II. UHPLC Columns

III. Preparative Packing Materials

IV. Related Products

V. Applications

VI. Technical Notes

VII. Index