

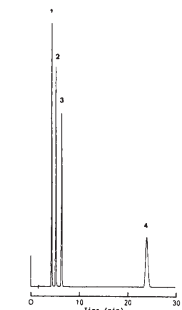
## (7) Metabolites

### • Androgens

#### COSMOSIL Application Data

Column: 5C<sub>18</sub>-AR-II  
Column size: 4.6mm I.D.-150mm  
Mobile phase: Methanol / H<sub>2</sub>O = 70/30  
Flow rate: 1.0 ml/min  
Temperature: 30°C  
Detection: UV235nm, 0.5AUFS

Sample: 1; 4-Androstene-3,17-dione (1.0µg)  
2; Testosterone (1.0µg)  
3; 17-Methyltestosterone (1.0µg)  
4; Testosterone Propionate (1.0µg)



NACALAI TESQUE, INC

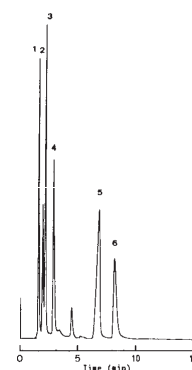
AP-0111

### • Catecholamines

#### COSMOSIL Application Data

Column: 5C<sub>18</sub>-AR-II  
Column size: 4.6mm I.D.-150mm  
Mobile phase: 20mmol/l NaH<sub>2</sub>PO<sub>4</sub>  
Flow rate: 1.0 ml/min  
Temperature: 30°C  
Detection: UV270nm, 0.1AUFS

Sample: 1; L-Noradrenaline (1.0µg)  
2; (±)-Epinephrine (1.2µg)  
3; L-DOPA (1.2µg)  
4; Dopamine (1.0µg)  
5; 3,4-Dihydroxyphenylacetic Acid (1.0µg)  
6; 3-Methoxytyramine (1.0µg)



NACALAI TESQUE, INC

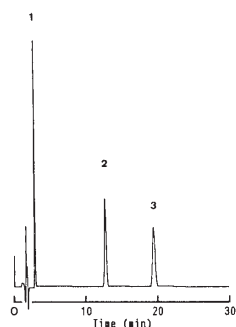
AP-0120

### • Estrogens

#### COSMOSIL Application Data

Column: 5C<sub>18</sub>-AR-II  
Column size: 4.6mm I.D.-150mm  
Mobile phase: Acetonitrile / H<sub>2</sub>O = 35/65  
Flow rate: 1.0 ml/min  
Temperature: 30°C  
Detection: UV280nm, 0.2AUFS

Sample: 1; Estriol (1.5µg)  
2; 17β-Estradiol (1.5µg)  
3; Estrone (1.5µg)



NACALAI TESQUE, INC

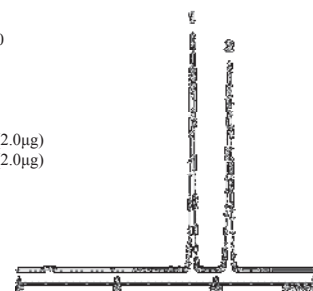
AP-0114

### • Estradiols

#### COSMOSIL Application Data

Column: 5C<sub>18</sub>-MS-II  
Column size: 4.6mm I.D.-150mm  
Mobile phase: Acetonitrile / H<sub>2</sub>O = 40/60  
Flow rate: 1.0 ml/min  
Temperature: 30°C  
Detection: UV280nm

Sample: 1; 17β-Estradiol (2.0µg)  
2; 17α-Estradiol (2.0µg)



NACALAI TESQUE, INC

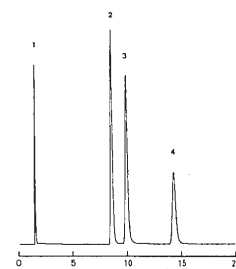
AP-0243

### • Hippuric Acids

#### COSMOSIL Application Data

Column: 5C<sub>18</sub>-MS-II  
Column size: 4.6mm I.D.-150mm  
Mobile phase: Methanol / 20mmol/l Phosphate  
Buffer(pH3) = 15/85  
Flow rate: 1.0 ml/min  
Temperature: 30°C  
Detection: UV225nm, 0.32AUFS

Sample: 1; Creatinine (0.14µg)  
2; Mandelic Acid (1.89µg)  
3; Hippuric Acid (0.61µg)  
4; N-(o-Toluoyl)glycine (0.52µg)



NACALAI TESQUE, INC

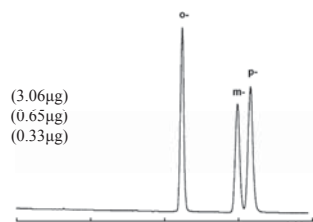
AP-0112

### • Methylhippuric Acids

#### COSMOSIL Application Data

Column: 5PYE  
Column size: 4.6mm I.D.-250mm  
Mobile phase: Methanol / 20mmol/l Phosphate  
buffer(pH2.5) = 40/60  
Flow rate: 1.0 ml/min  
Temperature: 30°C  
Detection: UV254nm

Sample: N-(o-Toluoyl)glycine (3.06µg)  
N-(m-Toluoyl)glycine (0.65µg)  
N-(p-Toluoyl)glycine (0.33µg)

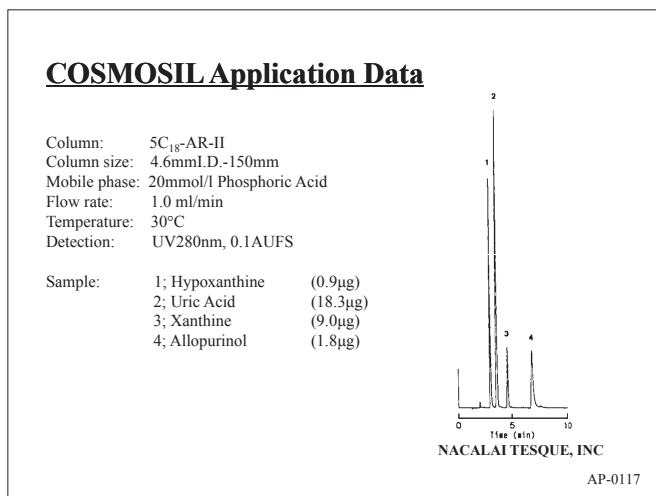


NACALAI TESQUE, INC

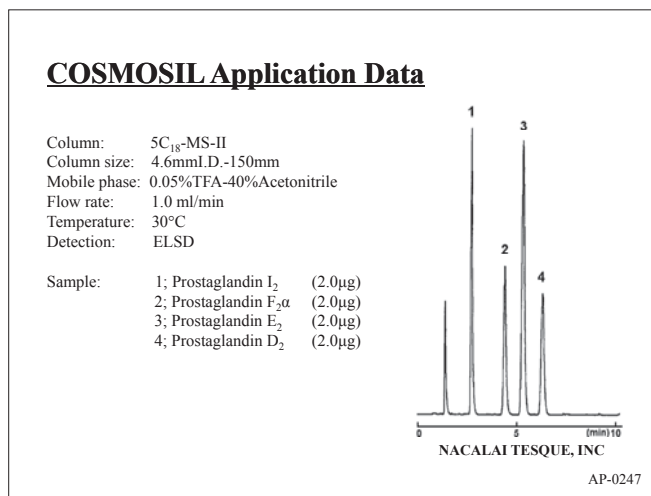
AP-0289

## (7) Metabolites

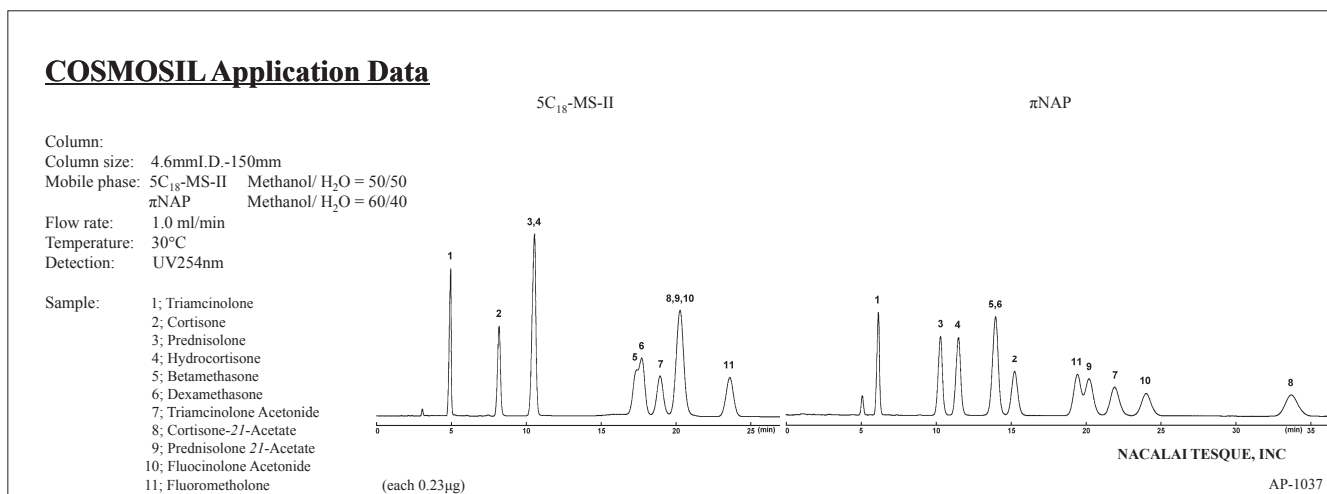
### • Urate Metabolites



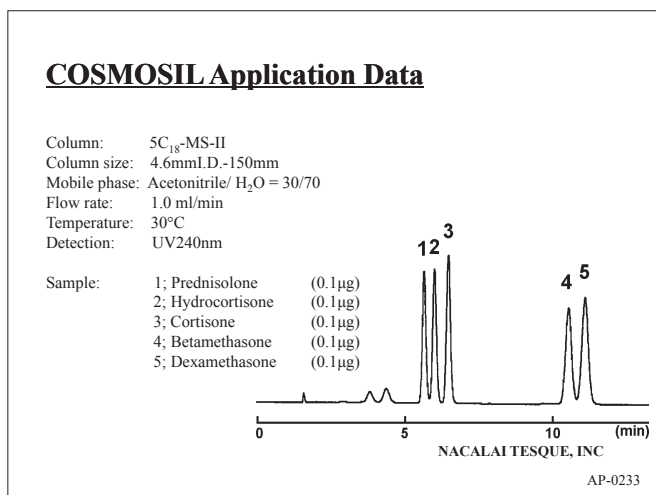
### • Prostaglandins



### • Adrenal Cortical Hormones



### • Adrenal Cortical Hormones



### • Adrenal Cortical Hormones

