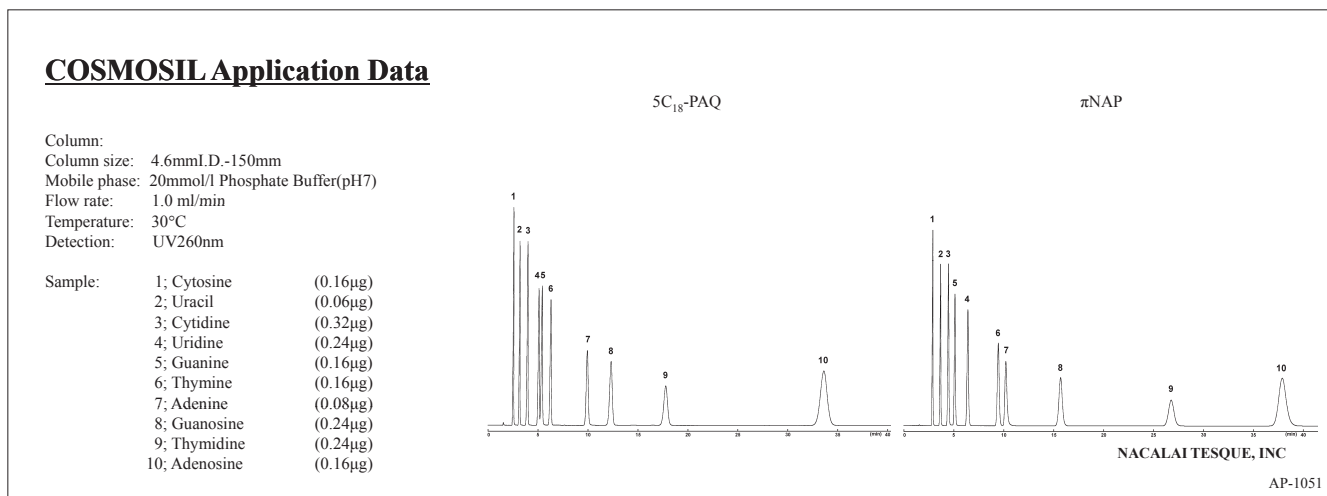
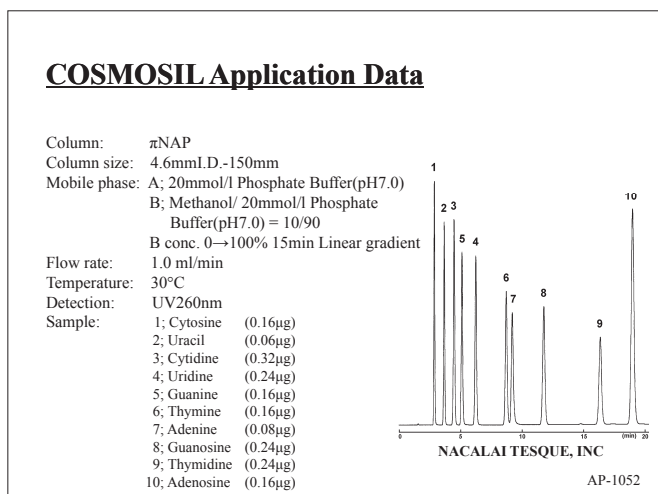


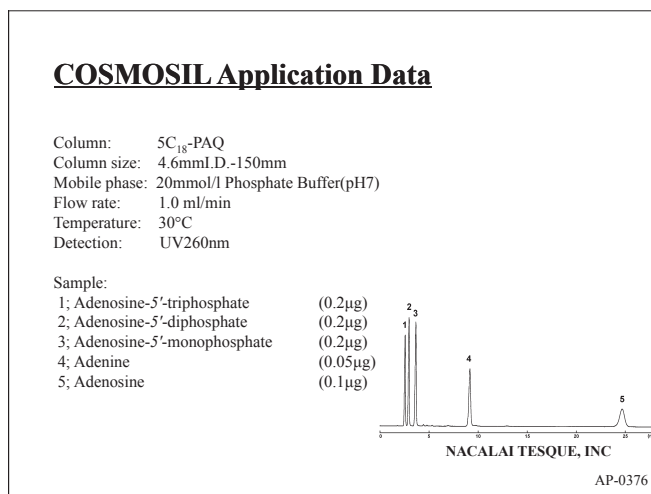
● Nucleobases and Nucleosides



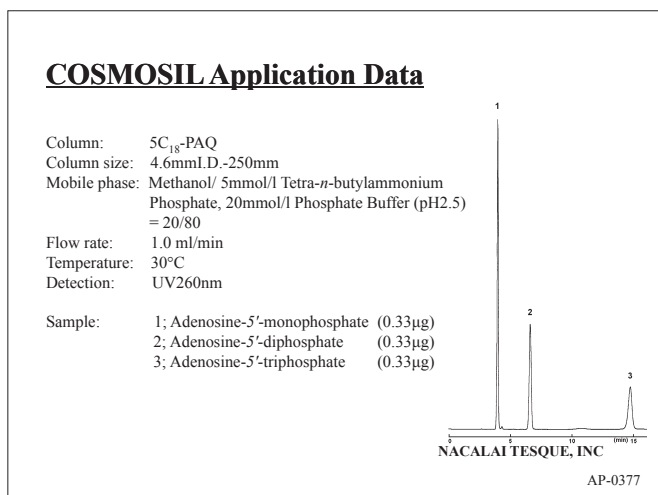
● Nucleobases and Nucleosides



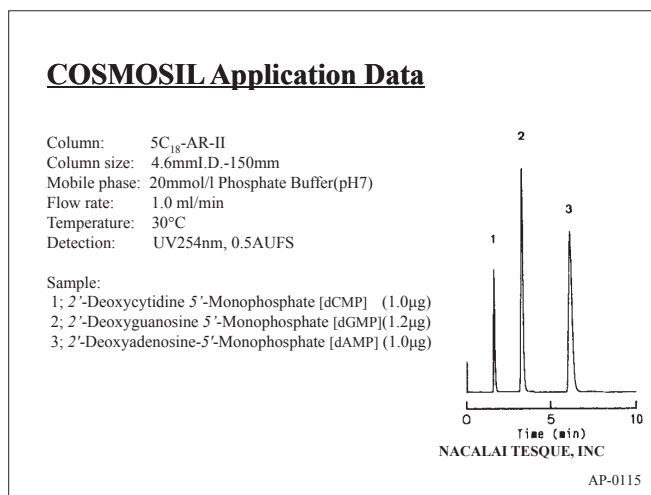
● Nucleobases, Nucleosides and Nucleotides



● Nucleotides



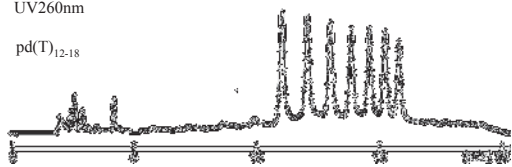
● Nucleotides



● Oligonucleotide

COSMOSIL Application Data

Column: Protein-R
Column size: 4.6mm I.D.-150mm
Mobile phase: A: 100mmol/l Ammonium Acetate
B: Acetonitrile
B conc. 9→11% 15min Linear gradient
Flow rate: 1.0 ml/min
Temperature: 30°C
Detection: UV260nm
Sample: pd(T)₁₂₋₁₈



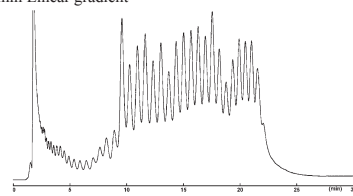
NACALAI TESQUE, INC

AP-1064

● Oligonucleotide

COSMOSIL Application Data

Column: COSMOGEL IEX Type Q-N
Column size: 4.6mm I.D.-100mm
Mobile phase: A: 20mmol/l Tris Buffer(pH8.3)
B: 20mmol/l Tris Buffer(pH8.3)
+ 1.0mol/l NaCl
B conc. 50→60% 30min Linear gradient
Flow rate: 0.5 ml/min
Temperature: 30°C
Detection: UV260nm
Sample: DNA [pd(A)₄₀₋₆₀]



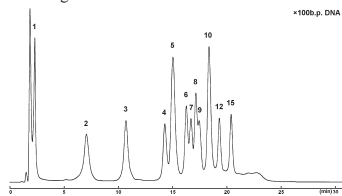
NACALAI TESQUE, INC

AP-1170

● DNA Ladder

COSMOSIL Application Data

Column: COSMOGEL IEX Type Q-N
Column size: 4.6mm I.D.-100mm
Mobile phase: A: 20mmol/l Tris Buffer(pH8.3)
B: 20mmol/l Tris Buffer(pH8.3)
+ 1.0mol/l NaCl
B conc. 75→85% 30min Linear gradient
Flow rate: 0.5 ml/min
Temperature: 30°C
Detection: UV260nm
Sample: DNA (100b.p. Ladder)



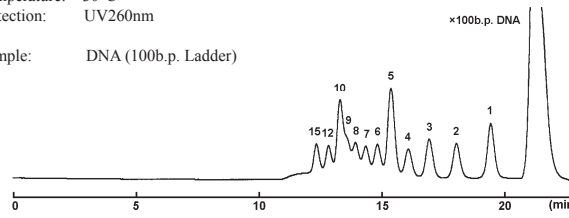
NACALAI TESQUE, INC

AP-1169

● DNA Ladder

COSMOSIL Application Data

Column: CNT-1000 + CNT-2000
Column size: 7.5mm I.D.-300mm × 2
Mobile phase: 20mmol/l Phosphate Buffer(pH7), 100mmol/l Na₂SO₄
Flow rate: 1.0 ml/min
Temperature: 30°C
Detection: UV260nm
Sample: DNA (100b.p. Ladder)



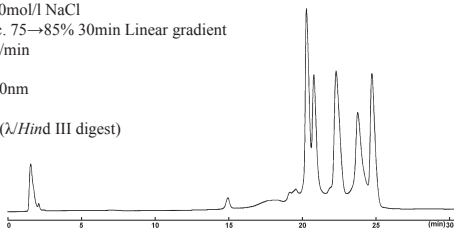
NACALAI TESQUE, INC

AP-1078

● λDNA/Hind III digest

COSMOSIL Application Data

Column: COSMOGEL IEX Type Q-N
Column size: 4.6mm I.D.-100mm
Mobile phase: A: 20mmol/l Tris buffer(pH8.3)
B: 20mmol/l Tris buffer(pH8.3)
+ 1.0mol/l NaCl
B conc. 75→85% 30min Linear gradient
Flow rate: 0.5 ml/min
Temperature: 30°C
Detection: UV260nm
Sample: DNA (λHind III digest)



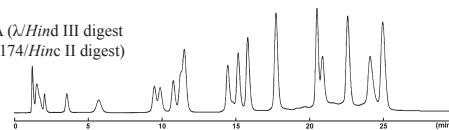
NACALAI TESQUE, INC

AP-1171

● λDNA/Hind III digest-ØX174/Hinc II digest

COSMOSIL Application Data

Column: COSMOGEL IEX Type Q-N
Column size: 4.6mm I.D.-100mm
Mobile phase: A: 20mmol/l Tris buffer(pH8.3)
B: 20mmol/l Tris buffer(pH8.3)
+ 1.0mol/l NaCl
B conc. 75→85% 30min Linear gradient
Flow rate: 0.5 ml/min
Temperature: 30°C
Detection: UV260nm
Sample: DNA (λHind III digest - ØX174/Hinc II digest)



NACALAI TESQUE, INC

AP-1172