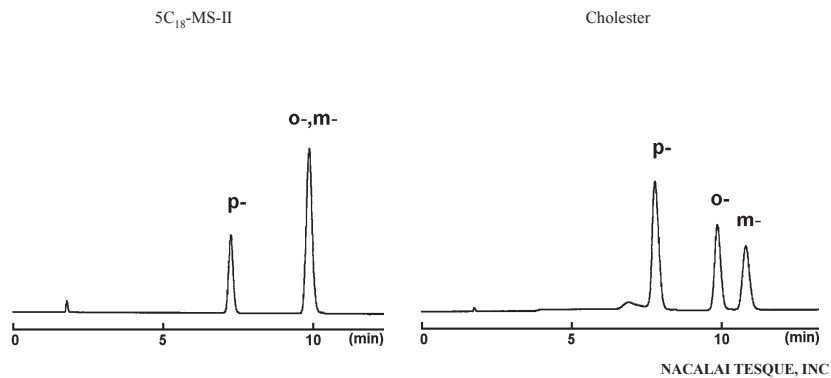


• Methoxyphenols

COSMOSIL Application Data

Column: 5C₁₈-MS-II
Column size: 4.6mm I.D.-150mm
Mobile phase: Methanol/ H₂O = 30/70
Flow rate: 1.0 ml/min
Temperature: 30°C
Detection: UV254nm

Sample: *o*-Methoxyphenol [Guaiacol] (3.3µg)
m-Methoxyphenol (3.3µg)
p-Methoxyphenol (3.3µg)



NACALAI TESQUE, INC

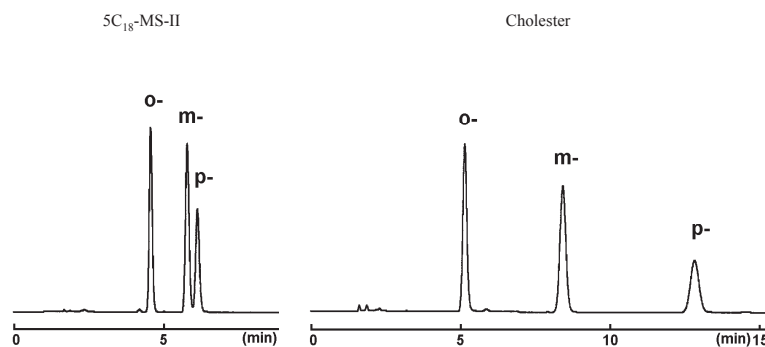
AP-1041

• Terphenyls

COSMOSIL Application Data

Column: 5C₁₈-MS-II
Column size: 4.6mm I.D.-150mm
Mobile phase: Methanol/ H₂O = 90/10
Flow rate: 1.0 ml/min
Temperature: 30°C
Detection: UV254nm

Sample: *o*-Terphenyl (0.15µg)
m-Terphenyl (0.05µg)
p-Terphenyl (0.075µg)



NACALAI TESQUE, INC

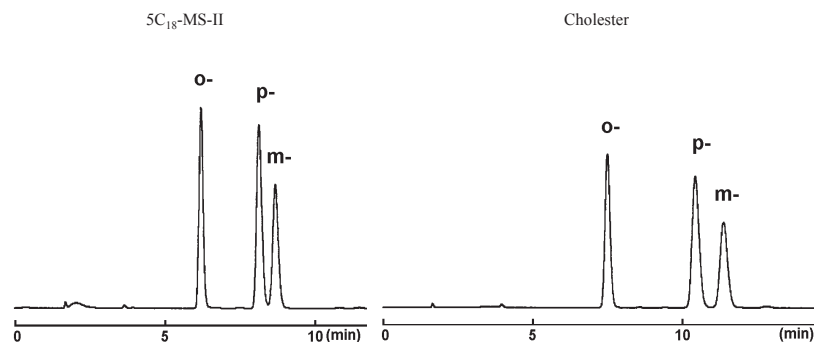
AP-1042

• Chlorophenols

COSMOSIL Application Data

Column: 5C₁₈-MS-II
Column size: 4.6mm I.D.-150mm
Mobile phase: Methanol/ H₂O = 50/50
Flow rate: 1.0 ml/min
Temperature: 30°C
Detection: UV254nm

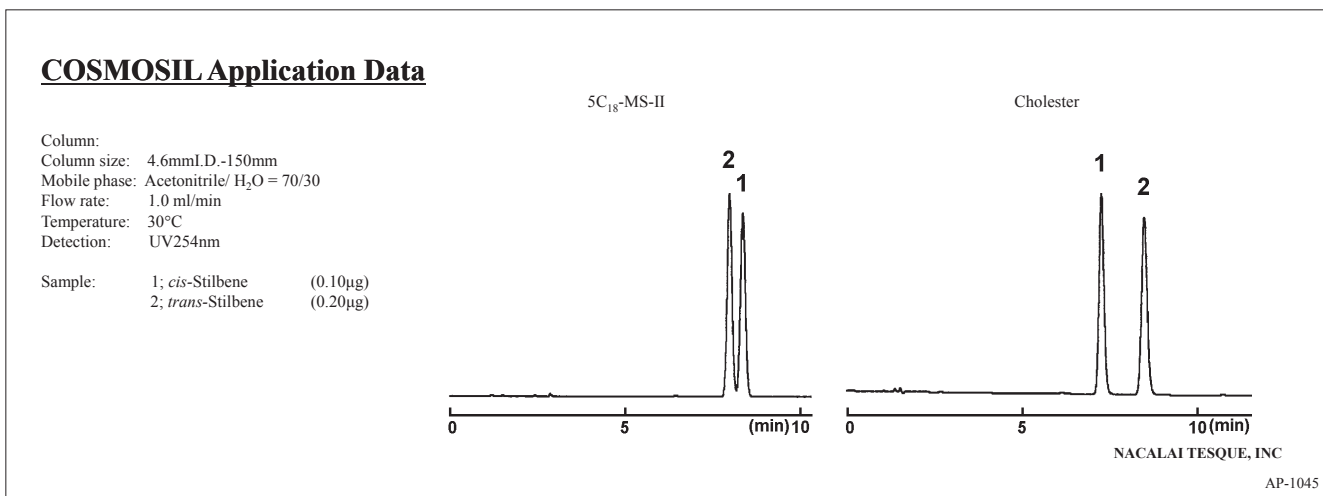
Sample: *o*-Chlorophenol (2.0µg)
m-Chlorophenol (2.0µg)
p-Chlorophenol (4.0µg)



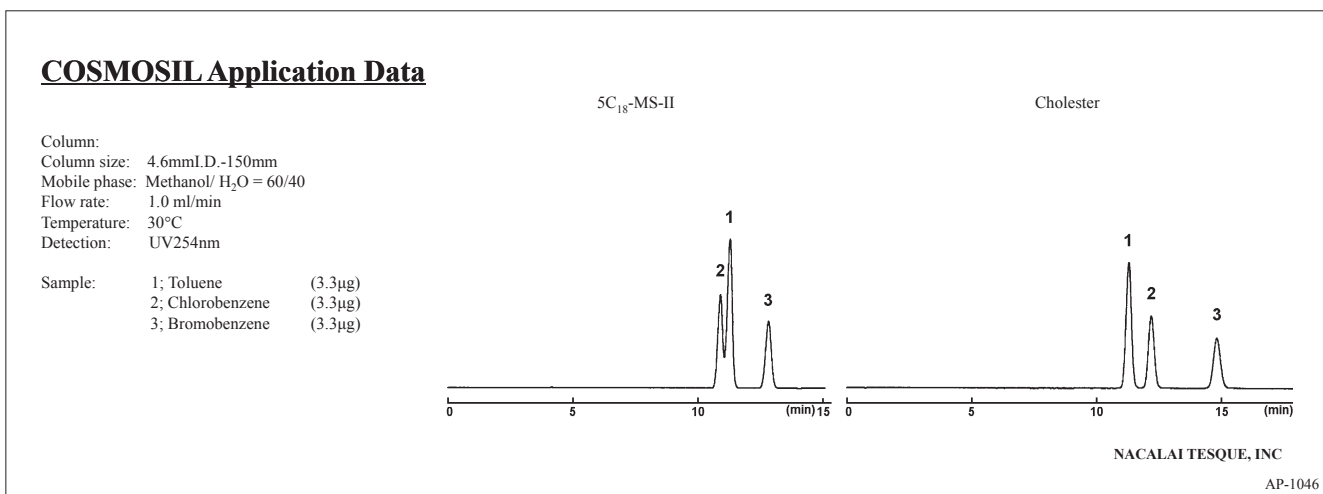
NACALAI TESQUE, INC

AP-1043

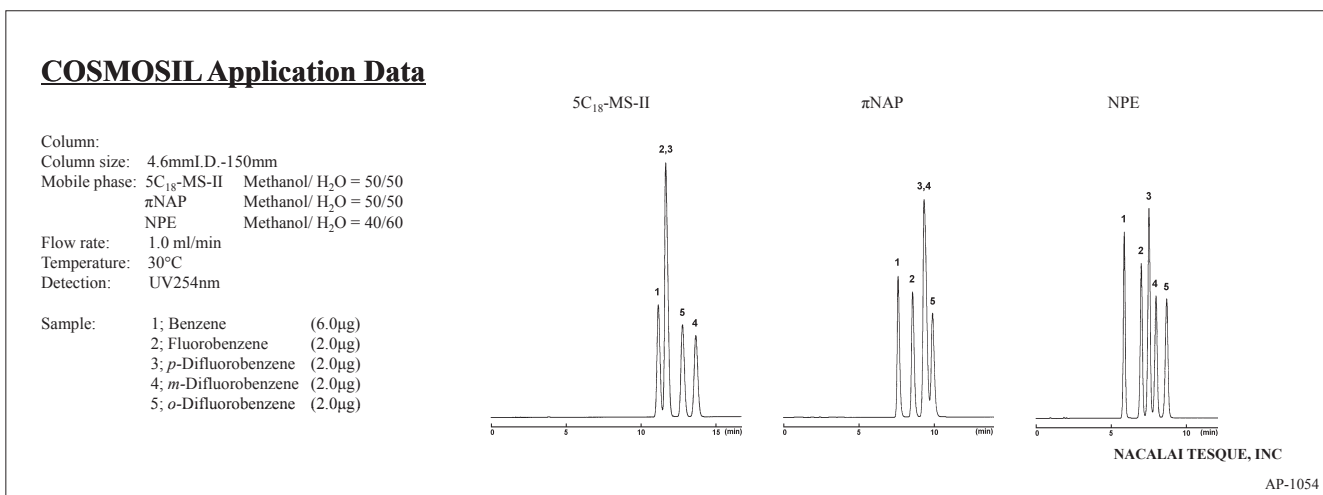
● Stilbenes



● Halogenated Benzenes



● Fluorinated Benzenes

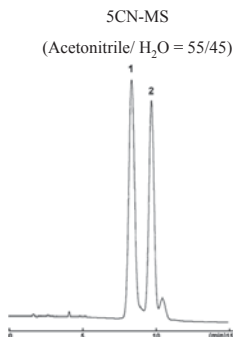


● Plasticizer (Branched-chain Isomeric Mixture)

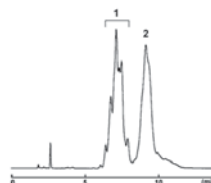
COSMOSIL Application Data

Column: 5CN-MS
 Column size: 4.6mm I.D.-150mm
 Mobile phase: (Acetonitrile/ H₂O = 55/45)
 Flow rate: 1.0 ml/min
 Temperature: 40°C
 Detection: UV220nm

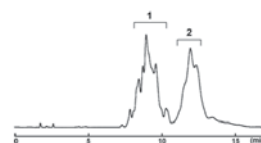
Sample: 1; Diisononyl Phthalate [DINP] (2.0 μg)
 2; Diisodecyl Phthalate [DIDP] (2.0 μg)



5C₁₈-PAQ
 (Acetonitrile/ H₂O = 90/10)



5C₁₈-MS-II
 (Acetonitrile/ H₂O = 95/5)



NACALAI TESQUE, INC

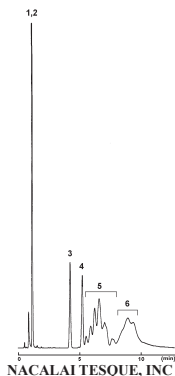
AP-1193

● Plasticizer

COSMOSIL Application Data

Column: 2.5C₁₈-MS-II
 Column size: 2.0mm I.D.-100mm
 Mobile phase: Methanol/ H₂O = 90/10
 Flow rate: 0.35 ml/min
 Temperature: 40°C
 Detection: UV220nm

Sample:
 1; Di-*n*-butyl Phthalate [DBP] (0.05mg/ml)
 2; *n*-Butyl Benzyl Phthalate [BBP] (0.05mg/ml)
 3; Dioctyl Phthalate [DOP][DEHP] (0.05mg/ml)
 4; Di-*n*-octyl Phthalate [DNOP] (0.05mg/ml)
 5; Diisononyl Phthalate [DINP] (0.25mg/ml)
 6; Diisodecyl Phthalate [DIDP] (0.25mg/ml)
 Injection Vol. 5.0μl



NACALAI TESQUE, INC

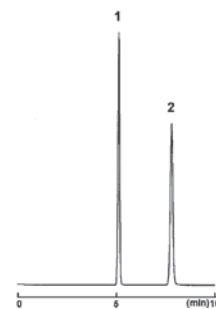
AP-1198

● Uracil and Uridine

COSMOSIL Application Data

Column: HILIC
 Column size: 4.6mm I.D.-250mm
 Mobile phase: Acetonitrile / H₂O = 90/10
 Flow rate: 1.0 ml/min
 Temperature: 30°C
 Detection: UV254nm

Sample: 1; Uracil (0.1μg)
 2; Uridine (0.2μg)



NACALAI TESQUE, INC

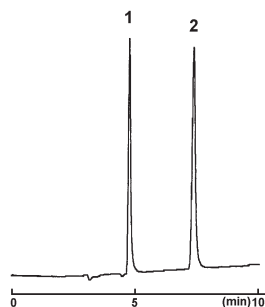
AP-0299

● Glycerol

COSMOSIL Application Data

Column: HILIC
 Column size: 4.6mm I.D.-250mm
 Mobile phase: Acetonitrile / H₂O = 95/5
 Flow rate: 1.0 ml/min
 Temperature: 30°C
 Detection: RI

Sample: 1; Trimethylene Glycol (20μg)
 2; Glycerol (20μg)



NACALAI TESQUE, INC

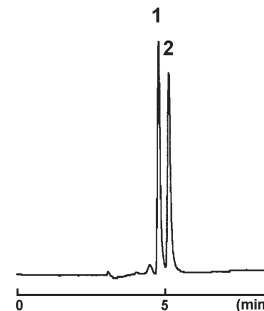
AP-0301

● Ethylene Glycol

COSMOSIL Application Data

Column: HILIC
 Column size: 4.6mm I.D.-250mm
 Mobile phase: Acetonitrile / H₂O = 95/5
 Flow rate: 1.0 ml/min
 Temperature: 30°C
 Detection: RI

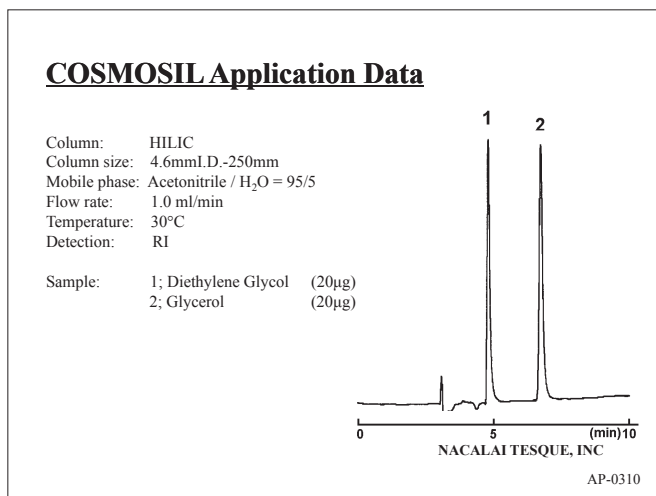
Sample: 1; Trimethylene Glycol (20μg)
 2; Ethylene Glycol (20μg)



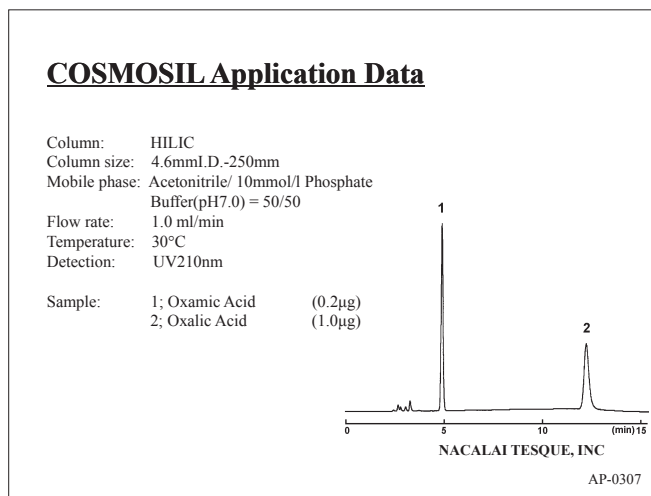
NACALAI TESQUE, INC

AP-0303

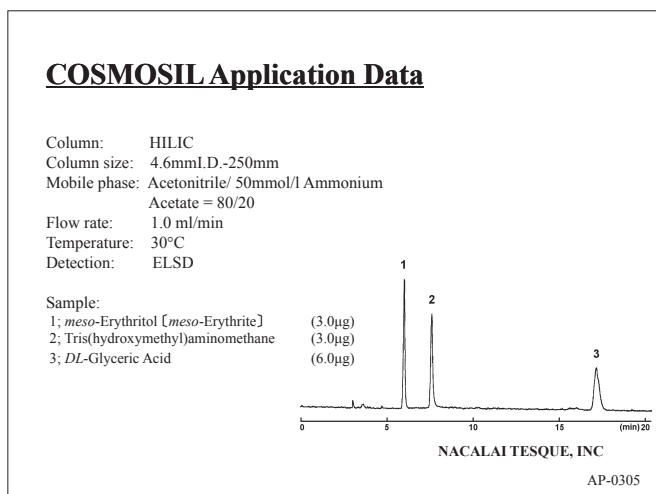
● Diethylene Glycol



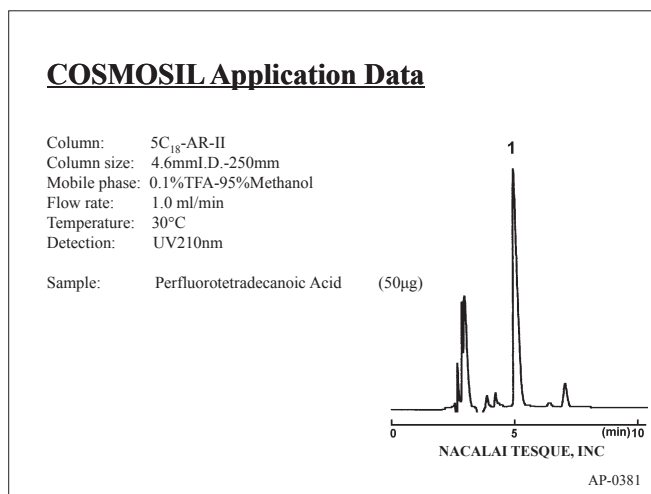
● Oxalic Acid



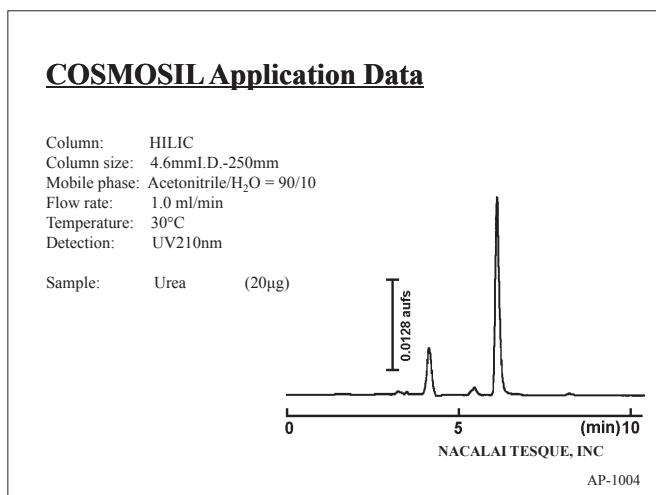
● Hydrophilic Compounds (Ionicity)



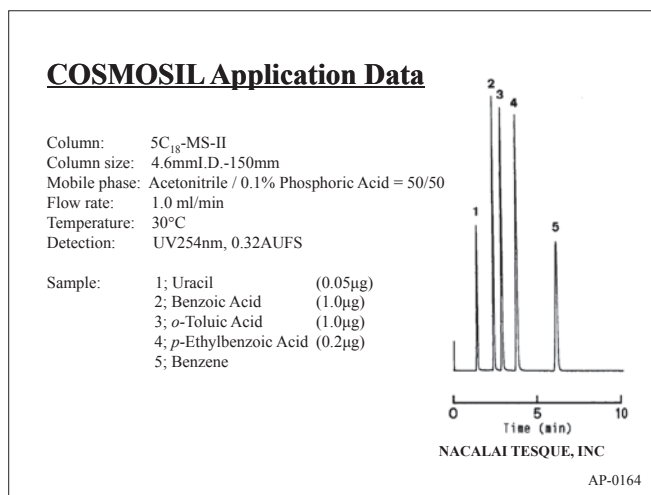
● Fluorine Compounds



● Urea



● Acid Compounds

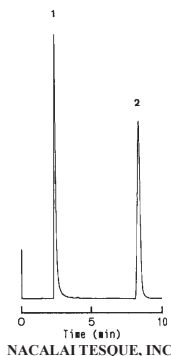


● Basic Compounds

COSMOSIL Application Data

Column: 5C₁₈-AR-II
 Column size: 4.6mm I.D.-150mm
 Mobile phase: Methanol/ 20mmol/l Phosphate
 Buffer(pH3) = 50/50
 Flow rate: 1.0 ml/min
 Temperature: 30°C
 Detection: UV254nm, 0.2AUFS

Sample: 1; *o*-Ethylpyridine (0.4μg)
 2; *N,N*-Dimethylaniline (0.6μg)



AP-0166

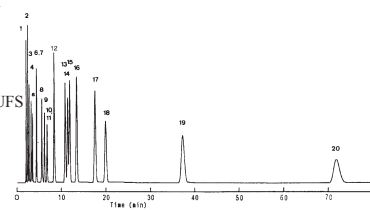
● Monosubstituted Benzenes (20 samples)

COSMOSIL Application Data

Column: 5C₁₈-MS-II
 Column size: 4.6mm I.D.-150mm
 Mobile phase: Methanol / H₂O
 = 60/40
 Flow rate: 1.0 ml/min
 Temperature: 30°C
 Detection: UV254nm, 0.16AUFS

Sample:

1: Benzamide	(0.49μg)	14: Chlorobenzene	(7.05μg)
2: Aniline	(0.4μg)	15: Toluene	(5.84μg)
3: Phenol	(0.67μg)	16: Bromobenzene	(15.37μg)
4: Benzonitrile	(0.83μg)	17: Iodobenzene	(3.66μg)
5: Acetophenone	(0.04μg)	18: Ethylbenzene	(6.87μg)
6: Styrene Oxide	(1.1μg)	19: <i>n</i> -Propylbenzene	(14.1μg)
7: Nitrobenzene	(0.06μg)	20: <i>n</i> -Butylbenzene	(15.93μg)
8: Methylbenzoate	(0.62μg)		
9: Anisole	(0.79μg)		
10: Fluorobenzene	(0.65μg)		
11: Benzene	(0.79μg)		
12: <i>N,N</i> -Dimethylaniline	(0.15μg)		
13: Thioanisole	(0.12μg)		



NACALAI TESQUE, INC

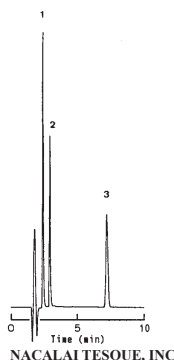
AP-0154

● Furans

COSMOSIL Application Data

Column: 5C₁₈-MS-II
 Column size: 4.6mm I.D.-150mm
 Mobile phase: Acetonitrile/ H₂O = 30/70
 Flow rate: 1.0 ml/min
 Temperature: 30°C
 Detection: UV220nm, 0.2AUFS

Sample: 1; Furfuryl alcohol (0.13μg)
 2; Furfural (0.25μg)
 3; Furan (0.23μg)



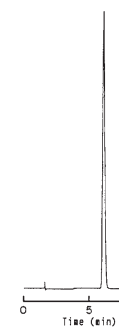
AP-0155

● Phenolphthalein

COSMOSIL Application Data

Column: 5C₁₈-MS-II
 Column size: 4.6mm I.D.-150mm
 Mobile phase: Methanol / H₂O = 50/50
 Flow rate: 1.0 ml/min
 Temperature: 30°C
 Detection: UV254nm, 0.1AUFS

Sample: Phenolphthalein (0.6μg)



NACALAI TESQUE, INC

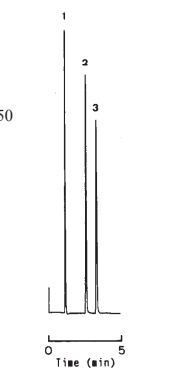
AP-0156

● Anilines

COSMOSIL Application Data

Column: 5C₁₈-MS-II
 Column size: 4.6mm I.D.-150mm
 Mobile phase: Acetonitrile / 0.1% Phosphoric Acid = 50/50
 Flow rate: 1.0 ml/min
 Temperature: 30°C
 Detection: UV254nm

Sample: 1; Aniline
 2; *p*-Nitroaniline
 3; 2,4-Dinitroaniline



NACALAI TESQUE, INC

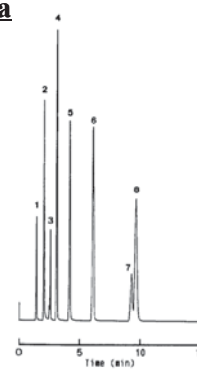
AP-0160

● Esters and others

COSMOSIL Application Data

Column: 5C₁₈-MS-II
 Column size: 4.6mm I.D.-150mm
 Mobile phase: Acetonitrile/ H₂O = 50/50
 Flow rate: 1.0 ml/min
 Temperature: 30°C
 Detection: UV254nm, 0.32AUFS

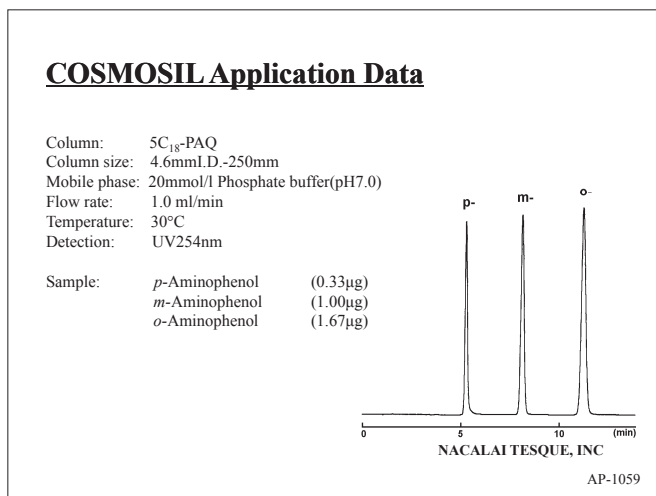
Sample: 1; Uracil
 2; Pyridine
 3; Phenol
 4; Ethyl *p*-Hydroxybenzoate
 5; *n*-Propyl *p*-Hydroxybenzoate
 6; Methyl Salicylate
 7; Toluene
 8; Ethyl Salicylate



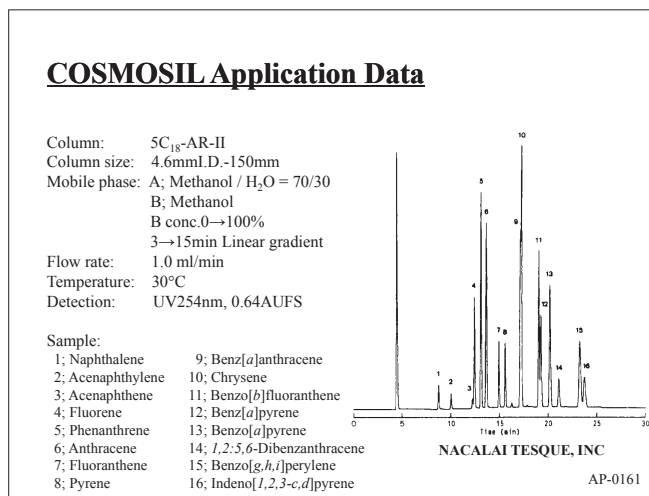
NACALAI TESQUE, INC

AP-0163

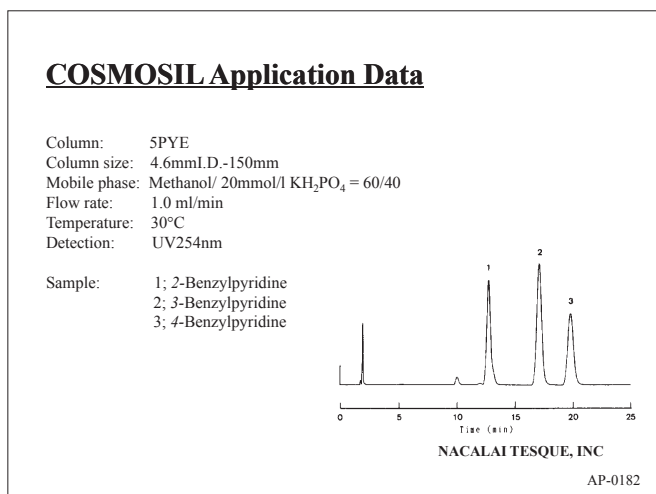
• Aminophenols



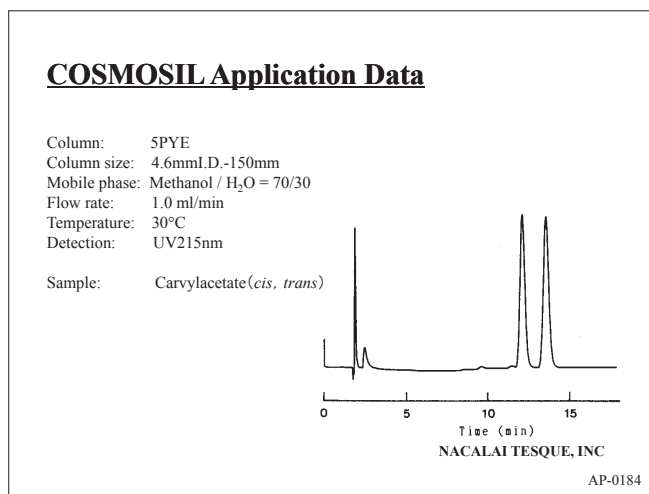
• Polyaromatic Compounds



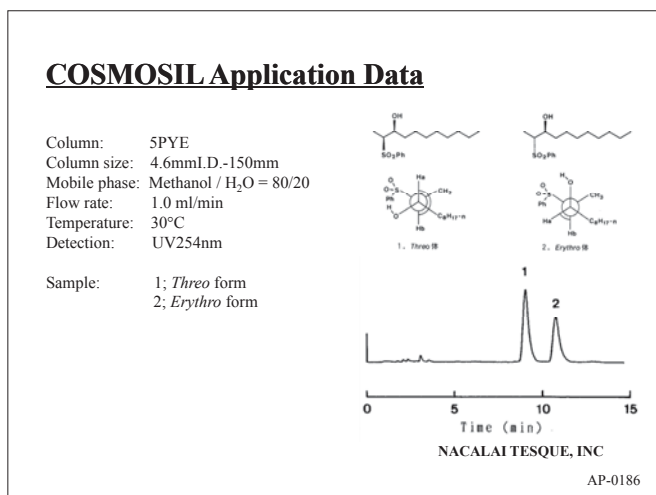
• Benzylpyridines



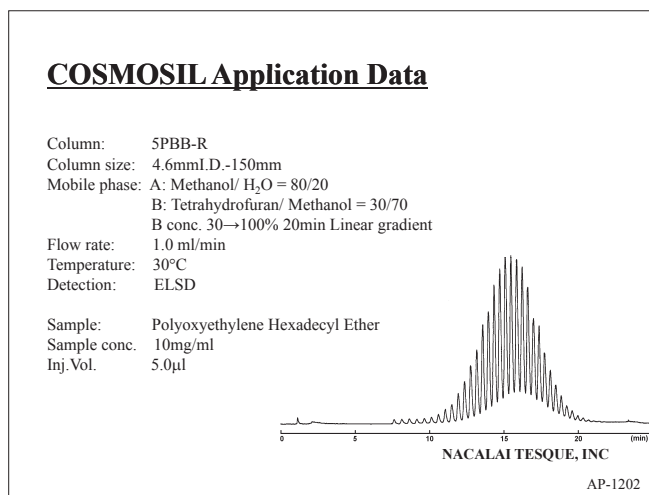
• Carvylacetate



• Diastereomers



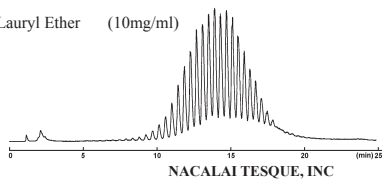
• Surfactant



- Surfactant

COSMOSIL Application Data

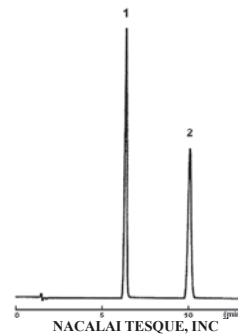
Column: 5PBB-R
 Column size: 4.6mm I.D.-150mm
 Mobile phase: A: Methanol/H₂O = 80/20
 B: Tetrahydrofuran/ Methanol = 30/70
 B conc. 30→100% 20min Linear gradient
 Flow rate: 1.0 ml/min
 Temperature: 30°C
 Detection: ELSD
 Sample: Polyoxyethylene Lauryl Ether (10mg/ml)
 Inj. Vol. 5.0μl



- Aromatic Compounds

COSMOSIL Application Data

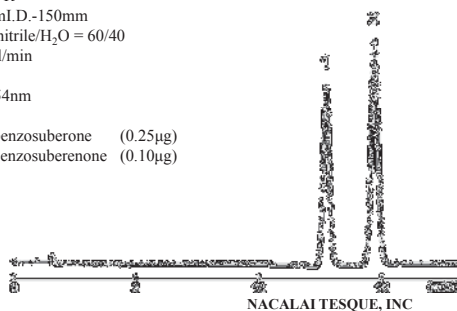
Column: 5PBB-R
 Column size: 4.6mm I.D.-150mm
 Mobile phase: Acetonitrile/H₂O = 70/30
 Flow rate: 1.0 ml/min
 Temperature: 30°C
 Detection: UV254nm
 Sample: 1; Diphenylmethane (5.80μg)
 2; Fluorene (0.13μg)



- Aromatic Compounds

COSMOSIL Application Data

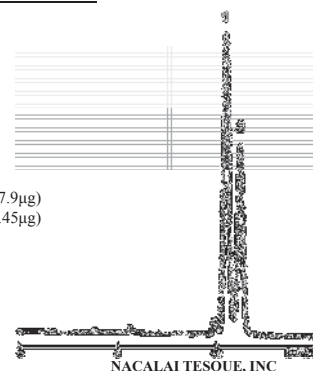
Column: 5PBB-R
 Column size: 4.6mm I.D.-150mm
 Mobile phase: Acetonitrile/H₂O = 60/40
 Flow rate: 1.0 ml/min
 Temperature: 30°C
 Detection: UV254nm
 Sample: 1; Dibenzosuberone (0.25μg)
 2; Dibenzosuberone (0.10μg)



- Aromatic Compounds

COSMOSIL Application Data

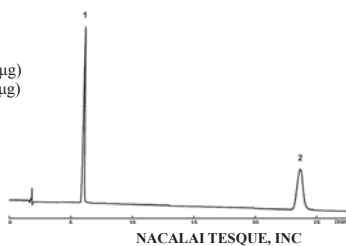
Column: 5PBB-R
 Column size: 4.6mm I.D.-150mm
 Mobile phase: Methanol/H₂O = 70/30
 Flow rate: 1.0 ml/min
 Temperature: 30°C
 Detection: UV254nm
 Sample: 1; *n*-Propylbenzene (27.9μg)
 2; Allylbenzene (0.45μg)



- Aromatic Compounds

COSMOSIL Application Data

Column: 5PBB-R
 Column size: 4.6mm I.D.-150mm
 Mobile phase: Methanol/H₂O = 90/10
 Flow rate: 1.0 ml/min
 Temperature: 30°C
 Detection: UV254nm
 Sample: 1; 1,1'-Binaphthyl (0.60μg)
 2; Perylene (0.72μg)



- Coloring Agent (CBB)

COSMOSIL Application Data

Column: 5C₁₈-MS-II
 Column size: 4.6mm I.D.-150mm
 Mobile phase: Methanol/ 20mmol/l Phosphate buffer(pH2.5) = 70/30
 Flow rate: 1.0 ml/min
 Temperature: 30°C
 Detection: UV254nm
 Sample: Coomassie Brilliant Blue G-250 (3.0μg)

