

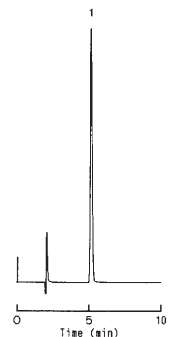
(4) Pesticides

• Asulam

COSMOSIL Application Data

Column: 5C₁₈-MS-II
 Column size: 4.6mm I.D.-150mm
 Mobile phase: Acetonitrile/ 50mmol/l Phosphate
 Buffer(pH3) = 15/85
 Flow rate: 1.0 ml/min
 Temperature: 30°C
 Detection: UV270nm

Sample: Asulam



NACALAI TESQUE, INC

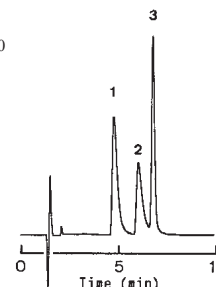
AP-0144

• Chlorophenoxyacetic Herbicides

COSMOSIL Application Data

Column: 5C₁₈-MS-II
 Column size: 4.6mm I.D.-150mm
 Mobile phase: Acetonitrile/ 0.1% Acetic Acid = 50/50
 Flow rate: 1.0 ml/min
 Temperature: 30°C
 Detection: UV275nm, 0.02AUFS

Sample: 1; MCP (0.22µg)
 2; MCPP (0.20µg)
 3; MCPB (0.24µg)



NACALAI TESQUE, INC

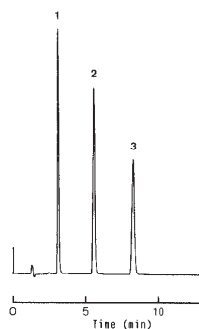
AP-0147

• Pesticides used at Golf Course

COSMOSIL Application Data

Column: 5C₁₈-MS-II
 Column size: 4.6mm I.D.-150mm
 Mobile phase: Acetonitrile/ 50mmol/l Phosphate
 buffer(pH3) = 60/40
 Flow rate: 1.0 ml/min
 Temperature: 30°C
 Detection: UV230nm

Sample: 1; Thiram
 2; Iprodione
 3; Bensulide



NACALAI TESQUE, INC

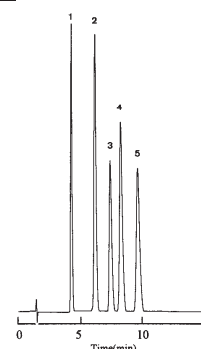
AP-0145

• Diphenyl Ether Herbicides

COSMOSIL Application Data

Column: 5C₁₈-MS-II
 Column size: 4.6mm I.D.-150mm
 Mobile phase: Acetonitrile/ H₂O = 70/30
 Flow rate: 1.0 ml/min
 Temperature: 30°C
 Detection: UV254nm, 0.1AUFS

Sample: 1; Fluorodifen (0.6µg)
 2; Chlorthoxylin (1.0µg)
 3; Nitrofen (1.0µg)
 4; Oxyfluorfen (1.2µg)
 5; CNP (1.0µg)



NACALAI TESQUE, INC

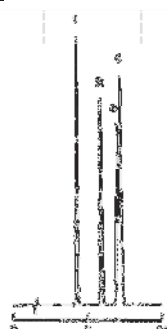
AP-0146

• Aniline Herbicides

COSMOSIL Application Data

Column: 5C₁₈-MS-II
 Column size: 4.6mm I.D.-150mm
 Mobile phase: Acetonitrile/ H₂O = 50/50
 Flow rate: 1.0 ml/min
 Temperature: 30°C
 Detection: UV254nm, 0.1AUFS

Sample: 1; DCMU (0.11µg)
 2; DCPA (0.08µg)
 3; Linuron (0.11µg)
 4; MCC (0.18µg)



NACALAI TESQUE, INC

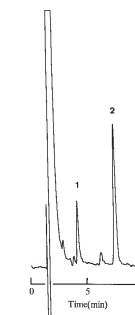
AP-0148

• Dithiocarbamate Herbicides

COSMOSIL Application Data

Column: 5C₁₈-MS-II
 Column size: 4.6mm I.D.-150mm
 Mobile phase: Acetonitrile/ 20mmol/l KH₂PO₄ = 40/60
 Flow rate: 1.0 ml/min
 Temperature: 30°C
 Detection: RI

Sample: 1; Maneb (60µg)
 2; Thiram (10µg)



NACALAI TESQUE, INC

AP-0149

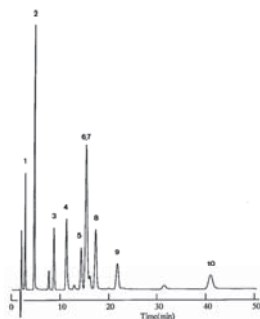
(4) Pesticides

● Carbamate Herbicides

COSMOSIL Application Data

Column: 5C₁₈-MS-II
Column size: 4.6mm I.D.-150mm
Mobile phase: Acetonitrile/ H₂O = 30/70
Flow rate: 1.0 ml/min
Temperature: 30°C
Detection: UV254nm, 0.05AUFS

Sample: 1; Methomyl (0.5µg)
2; Pirimicarb (0.5µg)
3; MTMC (2.0µg)
4; PHC (2.0µg)
5; MPMC (2.0µg)
6; NAC (1.0µg)
7; XMC (1.0µg)
8; Ethiofencarb (2.0µg)
9; Isoproc carb (2.0µg)
10; BPMC (2.0µg)



NACALAI TESQUE, INC

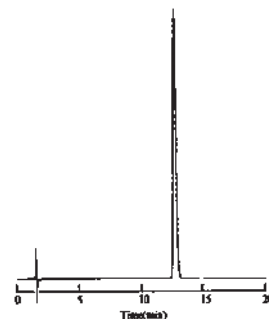
AP-0150

● Carbamate Herbicides

COSMOSIL Application Data

Column: 5C₁₈-MS-II
Column size: 4.6mm I.D.-150mm
Mobile phase: Acetonitrile/ H₂O = 80/20
Flow rate: 1.0 ml/min
Temperature: 30°C
Detection: UV254nm, 0.05AUFS

Sample: Carbosulfan (6.0µg)



NACALAI TESQUE, INC

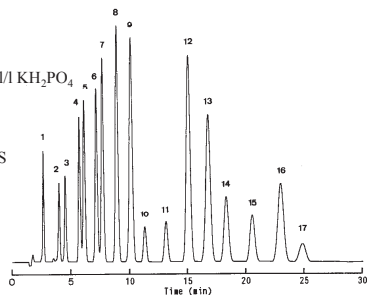
AP-0151

● Triazine and Urea Herbicides

COSMOSIL Application Data

Column: 5C₁₈-MS-II
Column size: 4.6mm I.D.-150mm
Mobile phase: Acetonitrile/ 20mmol/l KH₂PO₄ = 40/60
Flow rate: 1.0 ml/min
Temperature: 30°C
Detection: UV254nm, 0.2AUFS

Sample: 1; PAC (0.5µg)
2; Bromacil (0.5µg)
3; CAT (0.5µg)
4; Methabenzthiazuron (0.5µg)
5; Chlorotoluron (0.5µg)
6; Isoproturon (0.5µg)
7; Monolinuron (0.5µg)
8; Metabromuron (0.5µg)
9; Dimefuron (0.5µg)
10; Propazine (0.5µg)
11; Terbutylazine (0.5µg)
12; Linuron (0.5µg)
13; Chloroxuron (0.5µg)
14; Prometryn (0.5µg)
15; Terbutryn (0.5µg)
16; Chloro IPC (2.5µg)
17; Ethofumesate (5.0µg)



NACALAI TESQUE, INC

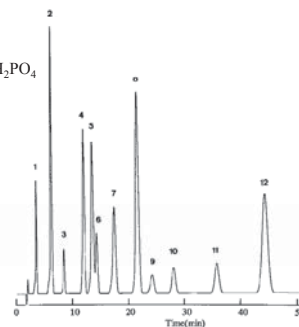
AP-0152

● Triazine and Urea Herbicides

COSMOSIL Application Data

Column: 5C₁₈-MS-II
Column size: 4.6mm I.D.-150mm
Mobile phase: Acetonitrile/ 20mmol/l KH₂PO₄ = 30/70
Flow rate: 1.0 ml/min
Temperature: 30°C
Detection: UV254nm, 0.2AUFS

Sample: 1; Ethidimuron (1.0µg)
2; Metoxuron (1.0µg)
3; Cyanazine (1.0µg)
4; Methabenzthiazuron (1.0µg)
5; Chlorotoluron (1.0µg)
6; Atrazine (1.0µg)
7; Isoproturon (1.0µg)
8; Metabromuron (1.0µg)
9; Metazachlor (5.0µg)
10; Propazine (1.0µg)
11; Terbutylazine (1.0µg)
12; Linuron (1.0µg)



NACALAI TESQUE, INC

AP-0153