

Premium Septa

Premium Septa are preconditioned for low bleed, plasma-coated to reduce sticking and packed in glass jars. Premium septa generally have much lower bleed than general purpose septa.

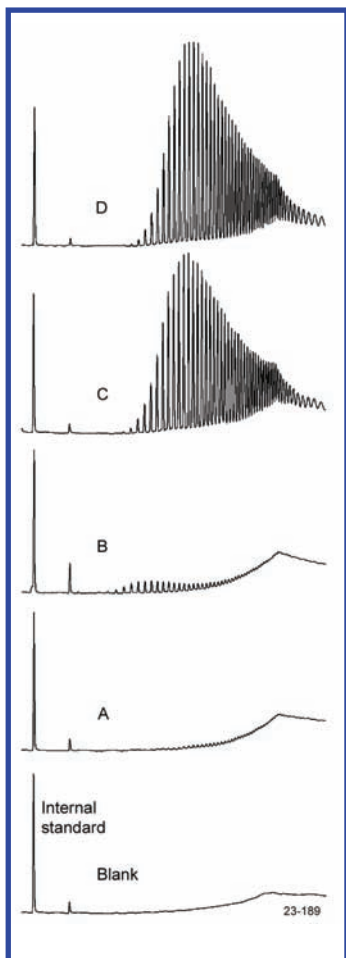
CenterGuide™

- Center point guides the needle for easy penetration
- Reduce needle bending
- Precision molding assures accurate fit
- Available in selected sizes

Precision-molded septa have a recess on the injection side, to guide the syringe needle to the same point with every injection. The CenterGuide design requires less force for initial penetration, for a smoother feel. Septum life may be enhanced in some applications by minimizing tearing and coring.

Plasma Coating

- Non-stick surface treatment
- Easy to change, even after high-temperature use
- Stays clean. Does not attract dust.



Septa BTO has the lowest bleed of any septa we have tested. Solvent extracts of residual silicones:

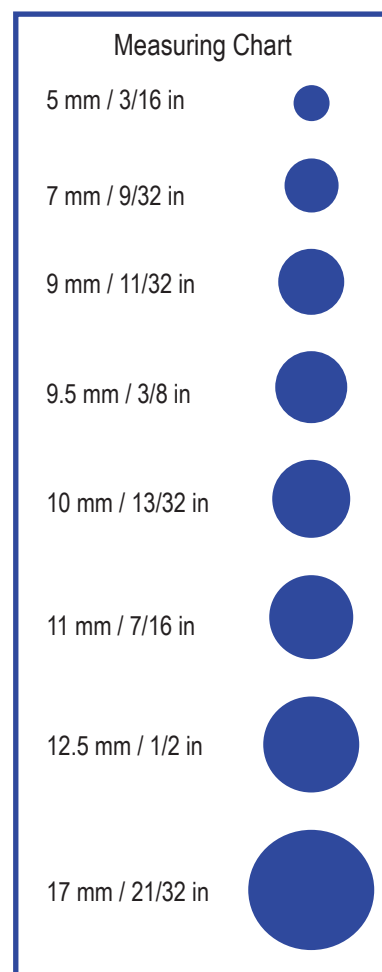
- A) BTO
- B) AG3
- C) Competitor's high-temp red septa
- D) Competitor's low-bleed green septa

Septum	High Temperature	Pre-pierced	Ultra-Low Bleed	Suggested Applications
Marathon™	✓	✓	•	Autosampler use; prepierced for greater reliability, trace analysis
BTO®	✓	•	✓	High injection port temperature, lowest bleed, trace analysis
Advanced Green 3™	✓	•	•	Routine use; low sticking

Upper Temperature Limit: Septa BTO can be used at 400°C; Marathon and Advanced Green 3 can be used at 350°C and injector set point temperatures in most instruments. Slight sticking may occur in new injection ports when holding septa above 300°C over many days.

Septa Cross Reference

Instrument	Septum Size
Agilent/HP	
5880A, 5890, 6850, 6890, 7890, 7890A , & 7820A	11 mm
5700 series, 5830/40	9.5 mm
On-column injection	5 mm
Purged packed column	11 mm
Bruker (former Varian)	
1177 Injector	9 mm
1040/41/60/61	9.5 mm
1075/77/78, 1079, 1093/94 SPI	11.5 mm
Fisons/Carlo Erba	
8000 Series	17 mm
PerkinElmer	
Sigma Series, 8000 Series, Clarus	11 mm
AutoSystem/AutoSystem XL	11 mm
Shimadzu	
9A, 14, 15A, 16, 17A, 2010 & 2014	Plug
Thermo	
Trace, Focus Split/Splitless, 8000 Series	17 mm
Trace 1300 Series	11 mm
9001, GCQ	9 mm
PTV Injector	12.7 mm





BTO 11 mm Septa

Septa BTO®

- Extended temperature range, low-bleed
- Maximum temperature 400°C*
- Virtually eliminates injection-port sticking
- Pre-conditioned; packaged in glass to prevent contamination
- Each batch GC-FID tested
- Ideal for use with low-bleed capillary columns and GC/MS

Septa BTO is Bleed and Temperature Optimized for today's most demanding GC and GC/MS applications. Septa BTO is formulated to extend low-bleed and outstanding mechanical properties of premium GC septa to the highest-temperature applications. It retains remarkable softness and pierceability at high temperatures, with extremely low bleed. Septa are 3 mm thick, except Shimadzu-style plug septa, and are packaged in glass vials.

Description	Qty	Item No.
5 mm BTO CenterGuide™	50/pk	298787
1/4 in (6.4 mm) BTO	50/pk	298755
9 mm BTO CenterGuide	50/pk	298713
3/8 in (9.5 mm) BTO	50/pk	298705
10 mm BTO	50/pk	298745
7/16 in (11 mm) BTO CenterGuide	50/pk	298717
7/16 in (11 mm) BTO CenterGuide	100/pk	298718
11.5 mm BTO CenterGuide	50/pk	298777
1/2 in (12.7 mm) BTO CenterGuide	50/pk	298727
17 mm BTO CenterGuide*	50/pk	298817
BTO for Shimadzu	50/pk	298735

* For 17 mm injectors the maximum is 350°; for extended use 330°C.

Advanced Green 3™

- True low-bleed, high temperature green septum
- Maximum temperature 350°C*

The CRS Advanced Green 3 Septum was specifically created to combine significantly longer injection life, low bleed and low injection port adhesion. The result is a green septum that should be used for all critical analyses. Advanced Green 3 Septa are packaged in glass vials for high purity. Septa are 3 mm thick, except Shimadzu-style plug septa.



AG3 11 mm Septa

Description	Qty	Item No.
5 mm AG3 CenterGuide™	50/pk	246525
9 mm AG3 CenterGuide	50/pk	246713
3/8 in (9.5 mm) AG3	50/pk	246124
7/16 in (11 mm) AG3 CenterGuide	50/pk	246225
7/16 in (11 mm) AG3 CenterGuide	100/pk	246228
11.5 mm AG3 CenterGuide	50/pk	246725
1/2 in (12.7 mm) AG3 CenterGuide	50/pk	246325
17 mm AG3 CenterGuide*	50/pk	246624
AG3 for Shimadzu	50/pk	246424

* For 17 mm injectors the maximum is 300°C.

Marathon™

- Excellent performance with long injection life
- Premium septum for autosamplers
- CenterGuide™ Marathon are prepierced for extremely reliable performance
- Recommended for SPME
- Maximum temperature setting 350°C*

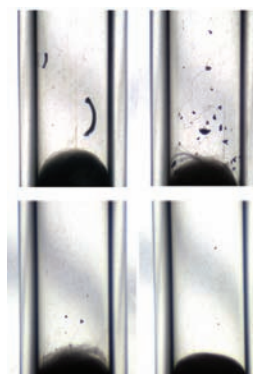
The CenterGuide versions of Marathon are prepierced to channel the needle through the same spot with each injection, which helps eliminate the common type of coring that may occur on the first injection. The Marathon septum is also ideal for standard manual-injection GC and GC/MS. Septa are 3 mm thick, except Shimadzu-style plug septa.



Marathon 11 mm Septa

Description	25/pk	50/pk	100/pk
5 mm Marathon CenterGuide	239587	239597	
9 mm Marathon CenterGuide	239778	239779	
7/16 in (11 mm) Marathon CenterGuide	239287	239297	239888
11.5 mm Marathon CenterGuide	239787	239798	
1/2 in (12.7 mm) Marathon CenterGuide	239387	239397	
17 mm Marathon*	239688	239698	
Marathon for Shimadzu	239488	239498	

* For 17mm injectors the maximum is 300°C.



Injection port liners after piercing septa 200 times with an SPME needle assembly. Top row, competitor's pre-drilled septa for SPME; bottom row, Marathon with CenterGuide.

General-Purpose Septa



Economy Blue Septa

Economy Blue Septa

CRS Blue Septa are designed for routine applications. They are easy to penetrate and made from silicone. Maximum temperature is 275°C.

Description	50/pk	100/pk
5 mm Economy Blue Septa	234106	234105
1/4 in (6.4 mm) Economy Blue Septa	234626	234625
9 mm Economy Blue Septa	234108	234109
3/8 in (9.5 mm) Economy Blue Septa	234906	234905
10 mm Economy Blue Septa	234111	234110
7/16 in (11 mm) Economy Blue Septa	234116	234115
11.5 mm Economy Blue Septa	234216	234215
1/2 in (12.7 mm) Economy Blue Septa	234126	234125
17 mm Economy Blue Septa	234118	234117
Shimadzu Economy Blue Septa	234121	234120



Puresep T

Puresep T™

- FEP/polyimide faced septum
- 3 mm thick
- Recommended maximum temperature is 225°C

Description	Qty	Item No.
1/4 in (6.4 mm) Puresep T	50/pk	230665
3/8 in (9.5 mm) Puresep T	50/pk	230675
7/16 in (11 mm) Puresep T	50/pk	230685
11.5 mm Puresep T	50/pk	230697
1/2 in (12.7 mm) Puresep T	50/pk	230695
13 mm Puresep T	50/pk	230698

Puresep P™

- Made from silicone rubber coated with a layer of high-temperature polyimide
- 3 mm thick
- Recommended maximum temperature is 300°C

Description	Qty	Item No.
1/4 in (6.4 mm) Puresep P	50/pk	230630
3/8 in (9.5 mm) Puresep P	50/pk	230640
7/16 in (11 mm) Puresep P	50/pk	230650
11.5 mm Puresep P	50/pk	230670
1/2 in (12.7 mm) Puresep P	50/pk	230660
13 mm Puresep P	50/pk	230680



Puresep P

Accessories

Septa Pick

The Septa Pick is useful for removing small pieces of septa lodged in the threads and corners of the septum cap or injection port. It can also be used to remove small bits of graphite ferrule from the cap and fittings of column connectors; other small cleaning jobs.

Description	Item No.
Septa Pick	205465



205465