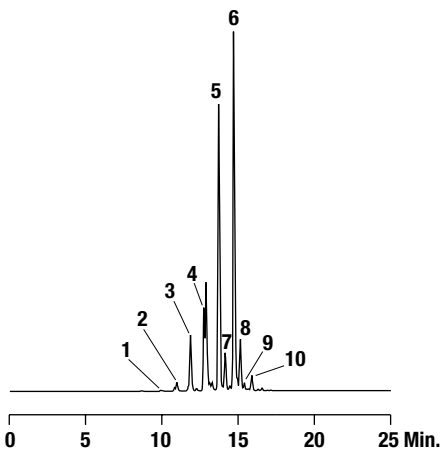


Biofuels

Triacylglycerols in Canola Oil

CHROM
10749



- 1. LLnLn
- 2. LLLn
- 3. OLnL
- 4. LLO
- 5. LOO
- 6. PLO
- 7. OOO
- 8. POO
- 9. POP
- 10. PPP

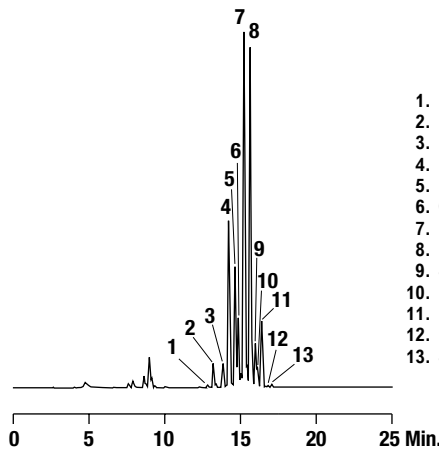
Column: Alltech® Alltima™ HP C18 HiLoad, 5µm, 250 x 4.6mm (Part No. 87698)
 Mobile Phase: A: Acetonitrile B: Dichloromethane
 Gradient:

Time:	0	20	25	30	35
%B:	30	70	70	30	30

 Flow Rate: 1.0mL/min
 Detector: ELSD

Triacylglycerols in Red Palm Oil

CHROM
10750



- 1. PLL
- 2. LOO
- 3. PLO
- 4. PLP
- 5. MOP
- 6. OOO
- 7. POO
- 8. POP
- 9. SOO
- 10. PPP
- 11. POS
- 12. PPS
- 13. SOS

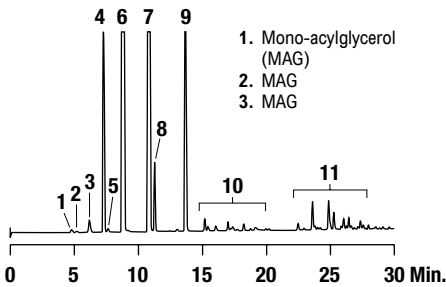
Column: Alltech® Alltima™ HP C18 HiLoad, 5µm, 250 x 4.6mm (Part No. 87698)
 Mobile Phase: A: Acetonitrile B: Dichloromethane
 Gradient:

Time:	0	20	25	30	35
%B:	30	70	70	30	30

 Flow Rate: 1.0mL/min
 Detector: ELSD

Biodiesel in Spec with EN14105 Method

CHROM
10644



- 1. Mono-acylglycerol (MAG)
- 2. MAG
- 3. MAG
- 4. Fatty Acid Methyl Ester (FAME)
- 5. MAG
- 6. FAME
- 7. FAME
- 8. MAG
- 9. FAME
- 10. Di-acylglycerol (DAG)
- 11. Tri-acylglycerol (TAG)

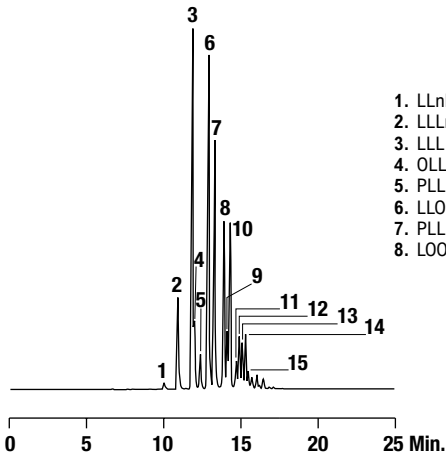
Column: Alltech® Alltima™ HP C18 HiLoad, 5µm, 250 x 4.6mm (Part No. 87698)
 Mobile Phase: A: Acetonitrile B: Dichloromethane
 Gradient:

Time:	0	5	30	32	35
%B:	0	15	70	70	0

 Flow Rate: 1.0mL/min
 Detector: ELSD

Triacylglycerols in Used Chinese Frying Oil

CHROM
10751



- 1. LLnLn
- 2. LLLn
- 3. LLL
- 4. OLLn
- 5. PLLn
- 6. LLO
- 7. PLL
- 8. LOO
- 9. LLS
- 10. PLO
- 11. PLP
- 12. OOO
- 13. SLO
- 14. POO
- 15. POP

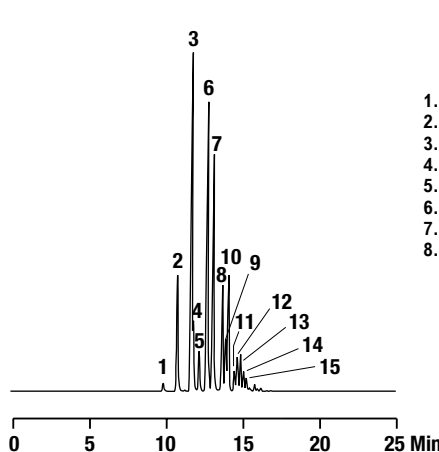
Column: Alltech® Alltima™ HP C18 HiLoad, 5µm, 250 x 4.6mm (Part No. 87698)
 Mobile Phase: A: Acetonitrile B: Dichloromethane
 Gradient:

Time:	0	20	25	30	35
%B:	30	70	70	30	30

 Flow Rate: 1.0mL/min
 Detector: ELSD

Triacylglycerols in Soy Oil

CHROM
10748



- 1. LLnLn
- 2. LLLn
- 3. LLL
- 4. OLLn
- 5. PLLn
- 6. LLO
- 7. PLL
- 8. LLO
- 9. LLS
- 10. PLO
- 11. PLP
- 12. OOO
- 13. SLO
- 14. POO
- 15. POP

Column: Alltech® Alltima™ HP C18 HiLoad, 5µm, 250 x 4.6mm (Part No. 87698)
 Mobile Phase: A: Acetonitrile B: Dichloromethane
 Gradient:

Time:	0	20	25	30	35
%B:	30	70	70	30	30

 Flow Rate: 1.0mL/min
 Detector: ELSD

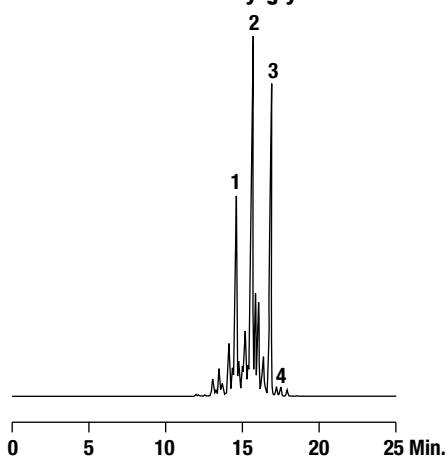
more applications

View our complete searchable chromatogram database at www.discoverysciences.com/chromdb/

Biofuels

Triacylglycerols in Lard

CHROM 10752



1. PPO
2. PPP
3. POS
4. SSS

Column: Alltech® Alltima™ HP C18 HiLoad, 5µm, 250 x 4.6mm (Part No. 87698)
Mobile Phase: A: Acetonitrile B: Dichloromethane
Gradient:

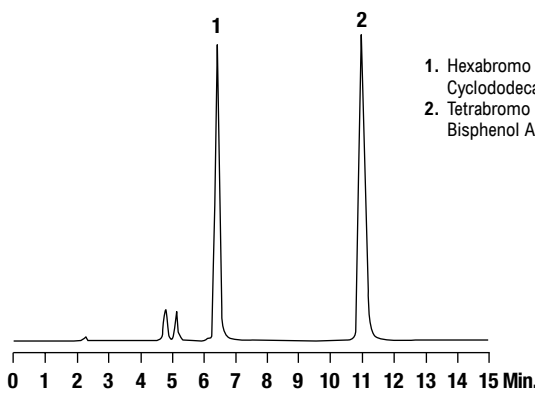
Time:	0	20	25	30	35
%B:	30	70	70	30	30

Flow Rate: 1.0mL/min
Detector: ELSD

Fire Retardants

Brominated Flame Retardants

CHROM 10261



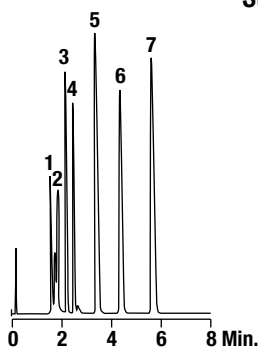
1. Hexabromo Cyclododecane
2. Tetrabromo Bisphenol A (Allyl Ether)

Column: Alltech® Alltima™ C18, 5µm, 250 x 4.6mm (Part No. 88056)
Mobile Phase: Water:Acetonitrile (5:95)
Flow Rate: 1.0mL/min
Detector: ELSD

Standards

Standards Mix

CHROM 10696

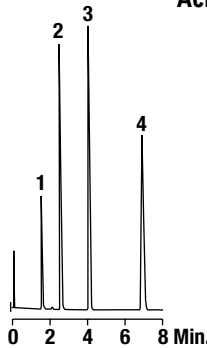


1. Nicotine
2. Quinine
3. Diphenhydramine
4. Nortriptyline
5. 2,4, Dichlorophenoxy Acetic Acid
6. 2,4, Dichlorophenoxy Propionic Acid
7. 2,4, Dichlorophenoxy Butyric Acid

Column: GraceSmart™ C18, 5µm, 150 x 4.6mm (Part No. 5138812)
Mobile Phase: 50mM Potassium Phosphate, pH3.0:Acetonitrile (50:50)
Detector: UV at 254nm

Acids, Bases and Neutrals

CHROM 10695

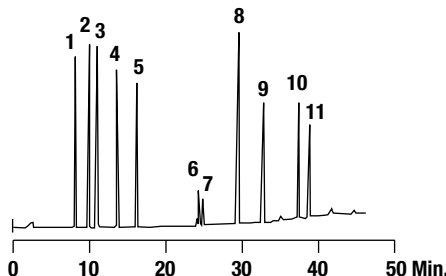


1. Uracil
2. Amitriptyline
3. Phenylvaleric Acid
4. Toluene

Column: GraceSmart™ C18, 5µm, 150 x 4.6mm (Part No. 5138812)
Mobile Phase: 50mM Potassium Phosphate, pH3.0:Acetonitrile (50:50)
Detector: UV at 254nm

Dyes

Color Additives - Dyes



1. Tartrazine
2. Amaranth
3. Indigo Carmine
4. New Coccine
5. Sunset Yellow
6. Fast Green
7. Brilliant Blue
8. Erythrosine
9. Acid Red
10. Phloxine
11. Rosé Bengale

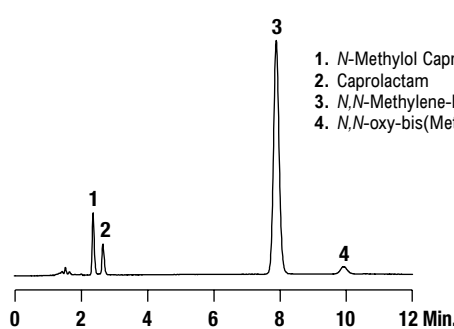
Column: Grom™ Sil 120 ODS-5 ST, 5µm, 150 x 4mm (Part No. 5113642)
Mobile Phase: A: 10mM Ammonium Phosphate, pH6.0:Methanol (90:10)
 B: 10mM Ammonium Phosphate, pH6.0:Methanol (20:30)
Gradient:

Time:	0	40	60
%B:	0	100	100

Flow Rate: 0.8mL/min
Detector: UV at 254nm

Solvents

Caprolactams

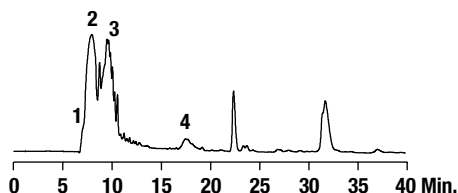


1. N-Methylol Caprolactam
2. Caprolactam
3. N,N-Methylene-bis(Caprolactam)
4. N,N-oxy-bis(Methylene)-Caprolactam

Column: Jones Genesis®, 4µm, 150 x 4.6mm (Part No. FM15960E)
Mobile Phase: Acetonitrile:20mM Phosphate, pH6.8 (22:78)
Flow Rate: 1.0mL/min
Detector: UV at 205nm

Fuels

Petrochemicals



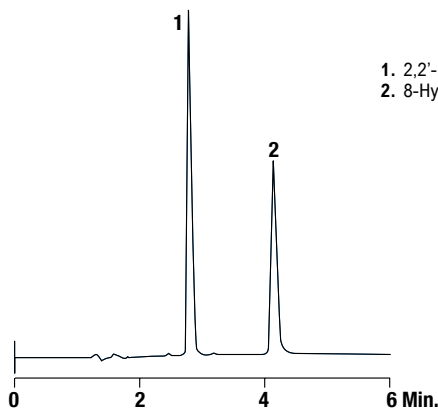
- 1. Aliphatics
- 2. Mono-aromatics
- 3. Di-aromatics
- 4. Polyaromatics

Column: Jones Genesis® Petro XL, 3µm, 250 x 4.6mm (Part No. FM25991E)
Mobile Phase: Hexane
Flow Rate: 1.0mL/min
Detector: UV at 210nm

Chelators

Metal Chelators

CHROM 8584



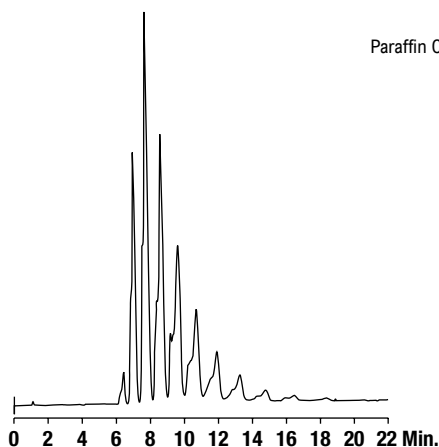
- 1. 2,2'-Dipyridyl
- 2. 8-Hydroxyquinoline

Column: Alltech® Alltima™ C18, 5µm, 150 x 4.6mm (Part No. 88052)
Mobile Phase: 0.025M K₂HPO₄, pH7.0:Tetrahydrofuran: Methanol (50:25:25)
Flow Rate: 1.0mL/min
Detector: UV at 254nm

Paraffins

Paraffin Analysis

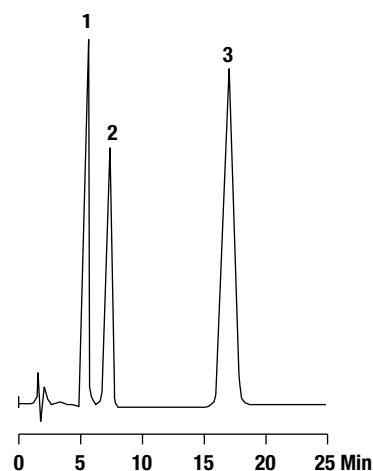
CHROM 10429



Column: Alltech® Alltima™ HP C18 HiLoad, 3µm, 100 x 4.6mm (Part No. 87685)
Mobile Phase: Acetonitrile:Dichloromethane (60:40)
Flow Rate: 1.0mL/min
Detector: ELSD

Cyclodextrins

Cyclodextrins



- 1. γ-Cyclodextrin
- 2. α-Cyclodextrin
- 3. β-Cyclodextrin

Column: Grom™ Sil 120 ODS-5 ST, 5µm, 150 x 4mm (Part No. 5113642)
Mobile Phase: Water:Methanol (95:5)
Flow Rate: 0.8mL/min
Detector: RI

miscellaneous