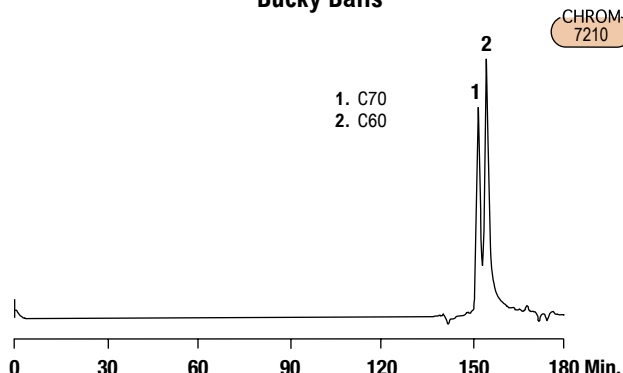


Fullerenes

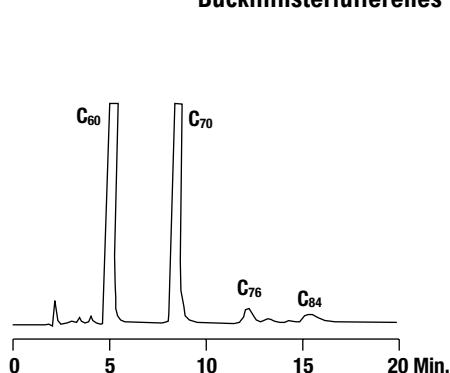
"Bucky Balls"



1. C70
2. C60

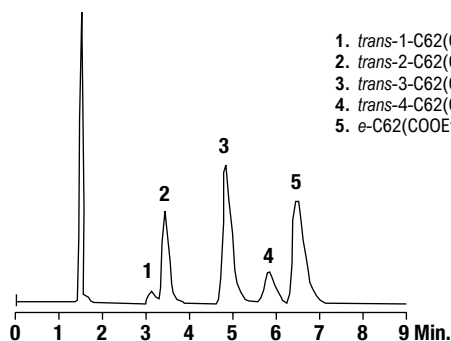
Column: Jordi™ DVB, 500Å, 500 x 10mm (6) (Part No. 100567)
Mobile Phase: Trichlorobenzene
Flow Rate: 1.5mL/min
Column Temp: 145°C
Detector: RI

Buckminsterfullerenes



Column: Vydac® C4, 5µm, 250 x 10mm (Part No. 201TP510)
Mobile Phase: Acetonitrile:Toluene (50:50)
Flow Rate: 5mL/min

Regioisomeric Fullerene Derivatives

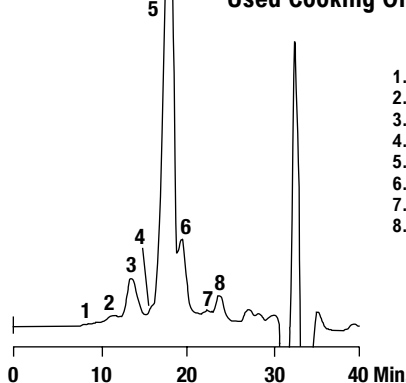


1. *trans*-1-C62(COOEt)₄
2. *trans*-2-C62(COOEt)₄
3. *trans*-3-C62(COOEt)₄
4. *trans*-4-C62(COOEt)₄
5. *e*-C62(COOEt)₄

Column: Grom™ Sil 100 Norm Ph-1 ST, 5µm, 250 x 4mm
Mobile Phase: Toluene
Flow Rate: 1.5mL/min
Detector: UV at 340nm

Cooking Oil

Used Cooking Oil

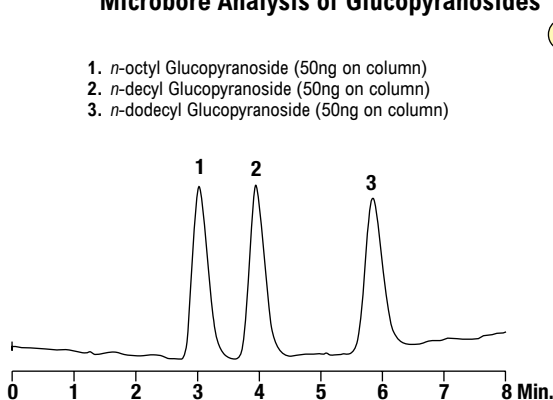


1. Polymerized
2. Polymerized
3. Triglycerides
4. MW 1800-3000
5. Triglycerides MW 930
6. Diglycerides MW 620
7. Monoglycerides MW 400
8. Free Fatty Acids MW 300

Column: Jordi™ DVB, 10³Å, 500Å, 500mm x 10mm (2)
 (Part No.s 100571, 100567)
Mobile Phase: Tetrahydrofuran
Flow Rate: 2.0mL/min
Detector: UV at 254nm

Surfactants

Microbore Analysis of Glucopyranosides



1. *n*-octyl Glucopyranoside (50ng on column)
2. *n*-decyl Glucopyranoside (50ng on column)
3. *n*-dodecyl Glucopyranoside (50ng on column)

Column: Alltech® Alltima™ C18, 5µm, 150 x 1mm (Part No. 88384)
Mobile Phase: Methanol:Water (90:10)
Flow Rate: 0.05mL/min
Detector: ELSD

