

*Manufacturer
of Life Science ...*

Herolab

ChemoLum

GmbH

Laborgeräte



ChemoLum



Multi-Imaging-System

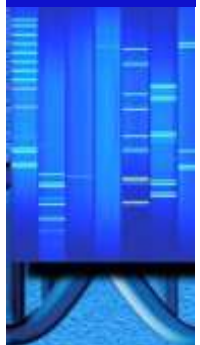


Chemiluminescence

Fluorescence



GEL DOCUMENTATION SYSTEMS



2014-04

All products built by Herolab carry the CE sign. Herolab is certified according to DIN EN ISO 9001:2008 and DIN EN ISO 13485.
All prices without VAT, ex works. – Herolab reserves the right to change technical specifications and prices without prior notice.

Herolab GmbH Laborgeräte
Ludwig-Wagner-Str. 12
69168 Wiesloch
GERMANY

page 1 of 4

Tel.: +49 (0) 6222 – 5802-0
Fax: +49 (0) 6222 – 5802-34
E-Mail: info@herolab.de
Internet: www.herolab.de

The new developed Multi-Imaging-System ChemoLum guaranties excellent results in chemiluminescence as well as in fluorescence applications.



There are two different systems available according to the camera offered:

Cat. No. 28 10 630 ChemoLum M2R

Cat. No. 28 10 650 Chemolum C1R



Herolab Scientific Grade CCD cameras:

ChemoLum M2R	Monochrome CCD-Kamera, 12 bit, 1,4 Mega-Pixel, Pixel sizes: 6,45 μm x 6,45 μm , Binning 2 x 2 und 4 x 4, this means 4- or 16-fold higher sensitivity, two stages Peltier cooling: $\Delta T = -45$ °C
ChemoLum C1R	CCD-Kamera: monochrom or color, 16 bit Multiplex -Images are possible, 8,5 Mega-Pixel, Pixel sizes: 5,4 μm x 5,4 μm , Binning 2 x 2, 3 x 3 und 9 x 9, one stage Peltier cooling: $\Delta T = -40$ °C

The lens control of the camera is motorized. Zoom **function** is given through positioning the camera in height . This way a light sensitive fixed angle objective lens can be used. A zoom objective lens would not be sufficiently light-sensitive. There are 4 presets for different sample sizes, which are focused automatically.

All products built by Herolab carry the CE sign. Herolab is certified according to DIN EN ISO 9001:2008 and DIN EN ISO 13485.
All prices without VAT, ex works. – Herolab reserves the right to change technical specifications and prices without prior notice.

Filter Wheel:

The filter wheel is controlled by motor. It has five positions.

In case of ChemoLum C1R three filters (RGB-filter) are included, as well two high qualitative plane glass filters.

In case of ChemoLum M2R two filters out of our program are delivered at your choice.

Housing:

The light-tight housing of ChemoLum is opened with a flap which moves upwards.

1. By pressing the live button when fluorescence detection is required the hood can be opened though to do the positioning of the gel on the transilluminator. The transilluminator itself will be switched off automatically. Should however the gel be visible for preparative work the safety switch can be switched off. The light of the switch is shining. The UV face protection shield must be worn. The gel can be pulled out on the drayer.

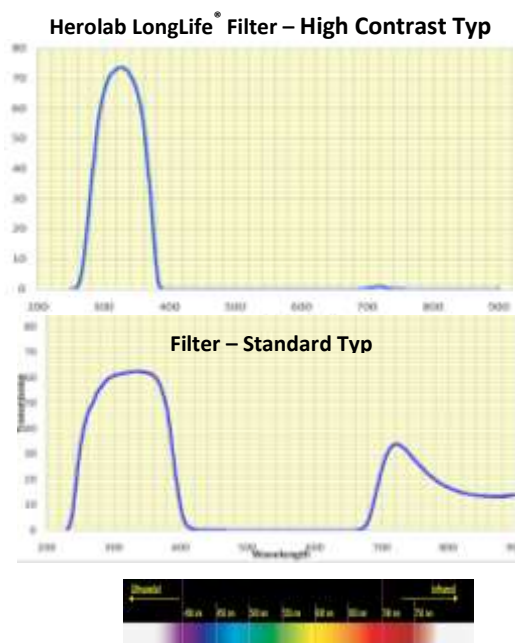
2. By selecting Image-shot with fixed time the door will be closed magnetically during detection.

Illumination:

Though the ChemoLum can be used for many other application besides chemiluminescence it offers many ways of illumination:

First of all there is **UV transilluminator** UVT-28 ME-HC on a pull-out rail.

This transilluminator has a High Contrast filter for 302/312 nm.



All products built by Herolab carry the CE sign. Herolab is certified according to DIN EN ISO 9001:2008 and DIN EN ISO 13485.

All prices without VAT, ex works. – Herolab reserves the right to change technical specifications and prices without prior notice.

The intensity of the transilluminator can be put on High (100 %) or Low (70 %).

Additionally there is a Radicon plate to convert UV light to white light.

Following **Epi-illuminations** are standard:

- Epi.UV 254 nm, twice
- Epi-UV 365 nm, twice
- Epi-LED white light, twice
- Epi-LED blue light 470 nm, twice



- Other wavelengths on request!

Software:

- ◆ **E.A.S.Y® Win32 Basic Software Modul A** with camera control
 - Digitalization and camera integration control
 - Import-/Export functions
 - On-Screen visualization of over- and underexposure
 - Language selectable: German and English
- ◆ **E.A.S.Y® Win32 Analysis Software Modules** included in the basic equipment:
 - Module B - Molecular weight and volume analysis
 - Module C – Spot-2D analysis and single volume

This software is GLP conform.

More modules you can find in extra brochure E.A.S.Y® Win software.

E.A.S.Y® Win can also be achieved as net licence.

Dimensions: w/d/h: 80 x 100 x 134 cm

Net weight: 78 kg

Gross weight: 103 kg

All products built by Herolab carry the CE sign. Herolab is certified according to DIN EN ISO 9001:2008 and DIN EN ISO 13485.
All prices without VAT, ex works. – Herolab reserves the right to change technical specifications and prices without prior notice.