





**Conditions:**

Injection: Split 250°C, 0.5µL, 1:50 Split Ratio.

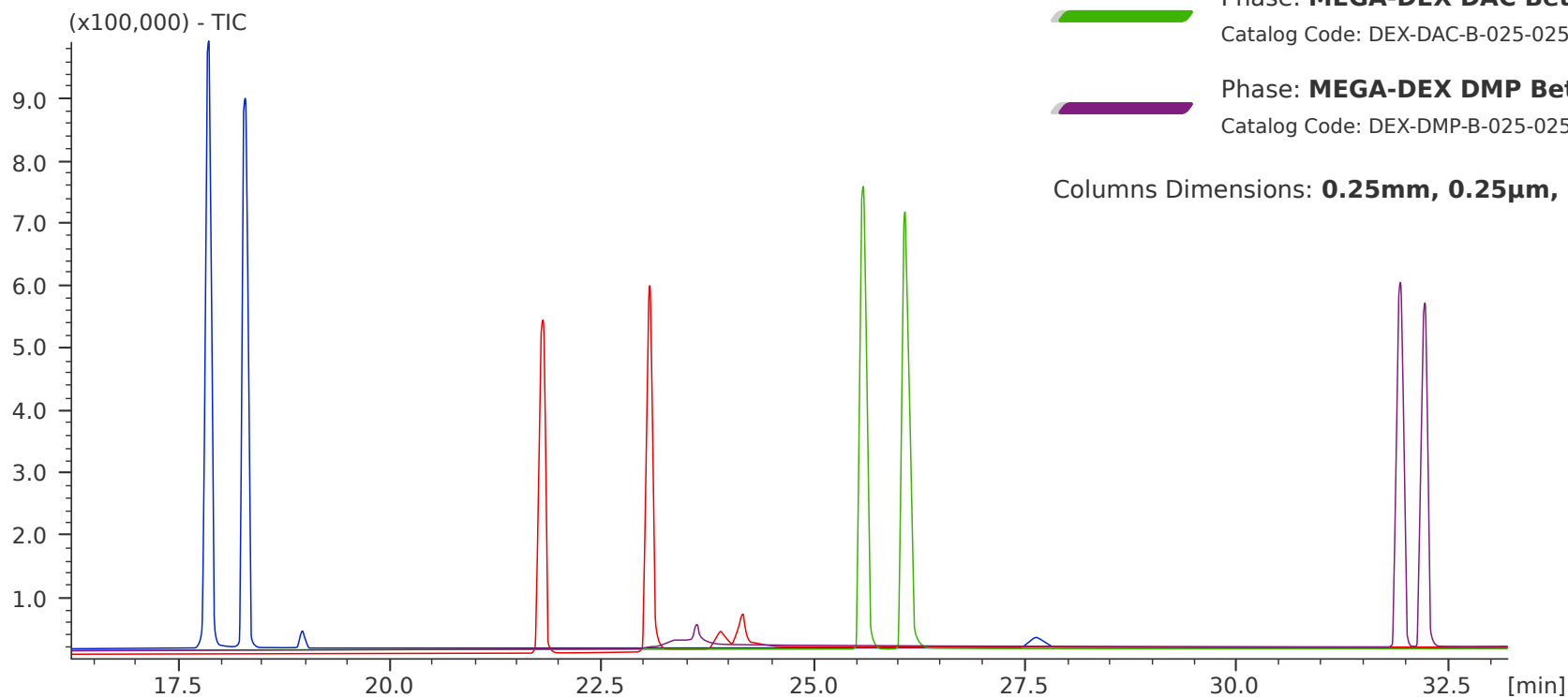
Sample dilution: 1mg/1mL in n-Hexane.

**Contact us** for additional information.

**Isoborneol (+/-)**  
Chiral Separation on MEGA-DEX Columns

-  Phase: **MEGA-DEX DMT Beta**  
Catalog Code: DEX-DMT-B-025-025-25
-  Phase: **MEGA-DEX DET Beta**  
Catalog Code: DEX-DET-B-025-025-25
-  Phase: **MEGA-DEX DAC Beta**  
Catalog Code: DEX-DAC-B-025-025-25
-  Phase: **MEGA-DEX DMP Beta**  
Catalog Code: DEX-DMP-B-025-025-25

Columns Dimensions: **0.25mm, 0.25µm, 25m.**



Acknowledgement: Prof. C.Bicchi, C.Cordero et al. - Università di Torino, Dipartimento di Scienza e Tecnologia del Farmaco, Via Pietro Giuria, 9 - Torino - Italy.

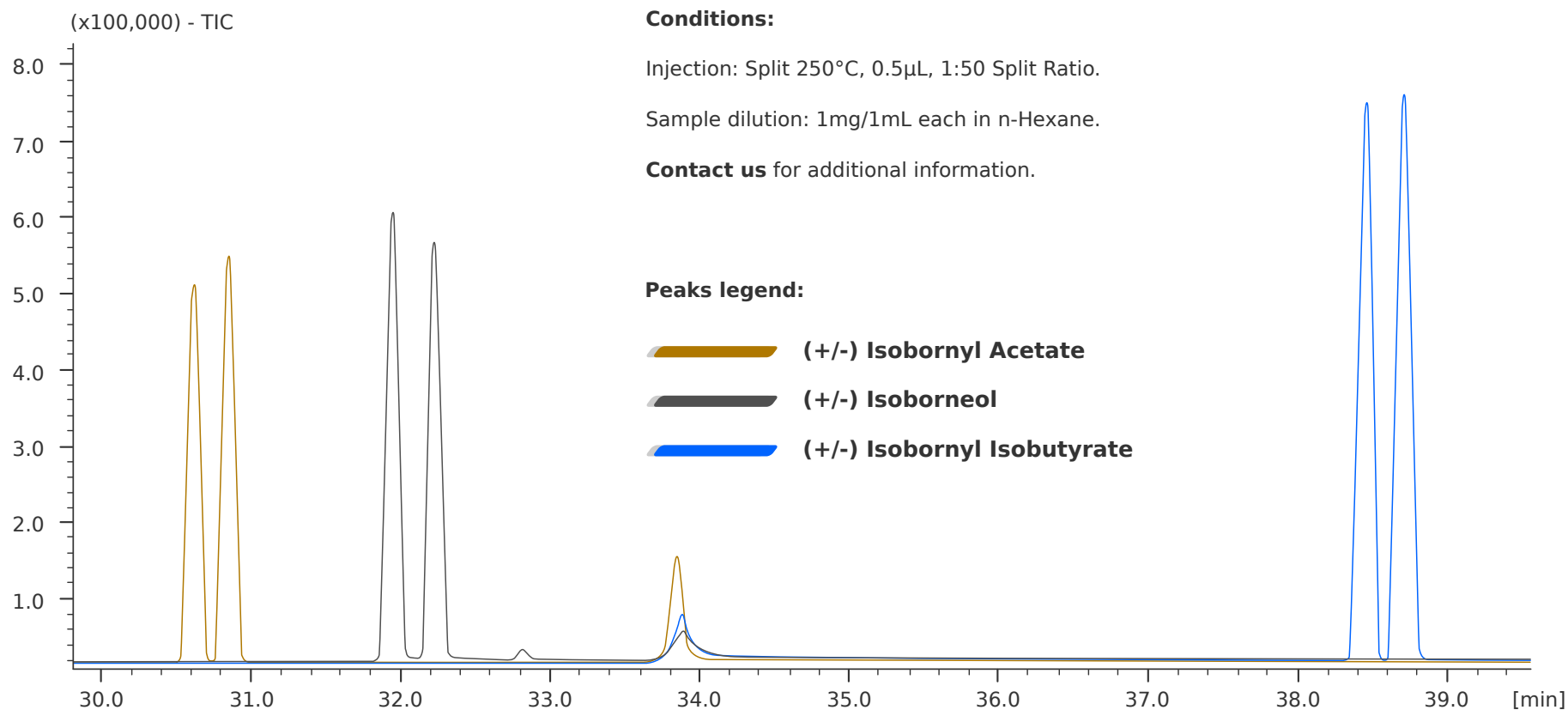


## Isorneol, Isobornyl Acetate and Isobornyl Isobutyrate

Chiral Separation on MEGA-DEX Columns

Column: **MEGA-DEX DET Beta - 0.25mm, 0.25 $\mu$ m, 25m**

Catalog Code: DEX-DET-B-025-025-25



Acknowledgement: Prof. C.Bicchi, C.Cordero et al. - Università di Torino, Dipartimento di Scienza e Tecnologia del Farmaco, Via Pietro Giuria, 9 - Torino - Italy.

