

## Phenols

Column: **MEGA-1 - 0.53mm, 1.00µm, 10m**

Catalog Code: S-1-053-100-10

### Conditions:

Injection: Split 250°C, 1.0µL.

Detector: FID 280°C.

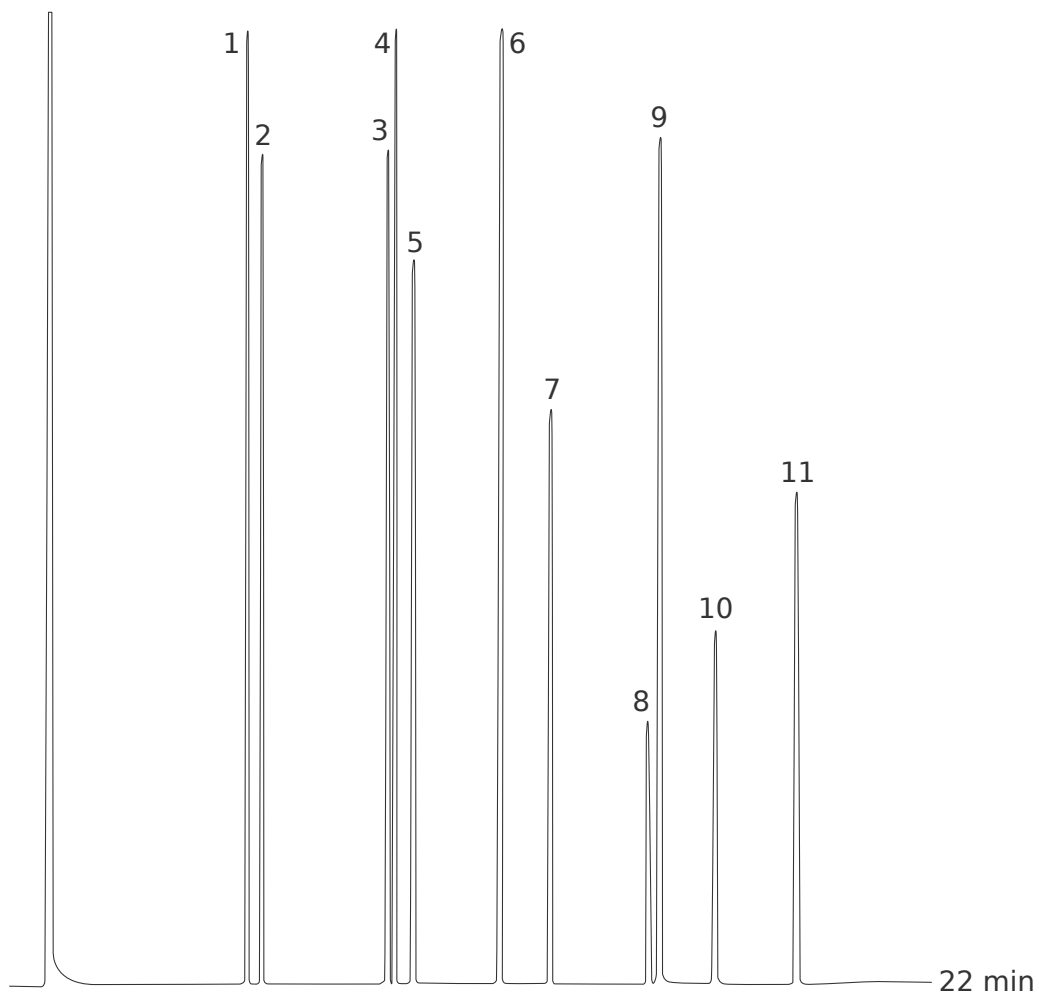
Oven Temp.: 60°C, 5°C/min, 160°C.

Carrier Gas: Helium, 20mL/min.

### Peaks:

1. Phenol
2. n-Decane
3. o-Cresol
4. m+p-Cresol
5. 2,6-dimethylphenol
6. o-Ethylphenol
7. 2,4 + 2,5-dimethylphenol
8. 3,5-dimethylphenol + p-ethylphenol
9. 2,3-dimethylphenol
10. 3,4-dimethylphenol





## Phenols EPA Method 604

Column: **MEGA-5 - 0.32mm, 1.00µm, 25m**

Catalog Code: S-5-032-100-25

### Conditions:

Injection: Split 300°C, 1µL, 1:100 Split Ratio.

Sample: 2000µg/mL each in Methanol.

Detector: FID 300°C.

Oven Temp.: 110°C, 8°C/min, 280°C.

Carrier Gas: Hydrogen, 60 kPa.

### Peaks:

1. Phenol
2. 2-chlorophenol
3. 2-nitrophenol
4. 2,4-dimethylphenol
5. 2,4-dichlorophenol
6. 4-chloro-3-methylphenol
7. 2,4,6-trichlorophenol
8. 2,4-dinitrophenol
9. 4-nitrophenol
10. 2-methyl-4,6-dinitrophenol
11. Pentachlorophenol

