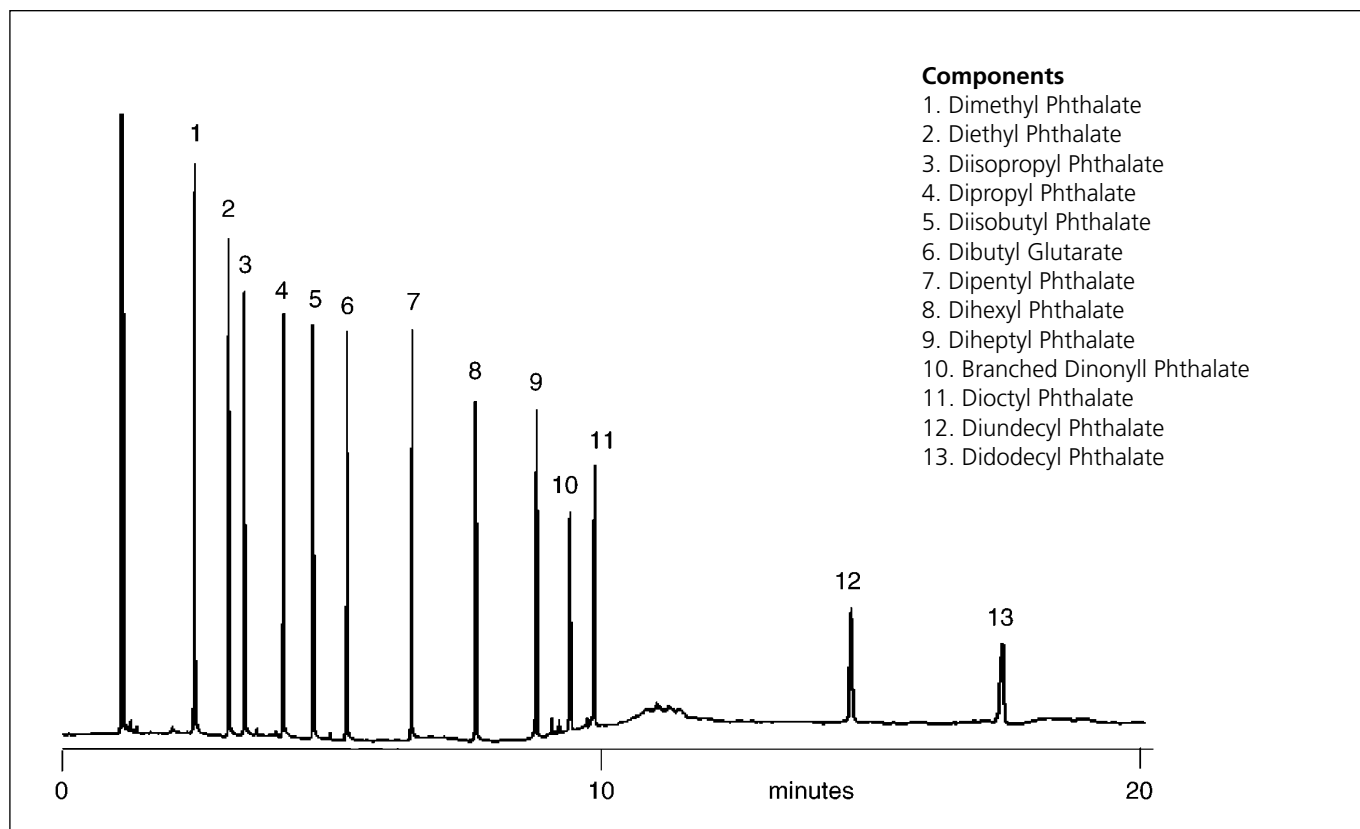


ANALYSIS OF PHTHALATE ESTERS ON BPX5

PHTHALATE ESTERS

Column Part No.:	054125	Final Temp:	350 °C, 5 min
Phase:	BPX5, 0.5 µm film	Carrier Gas:	H ₂ , 6 psi
Column:	25 m x 0.32 mm ID	Detector:	FID
Initial Temp:	180 °C, 0 min	Sensitivity:	140 x 10 ⁻¹² AFS
Rate:	15 °C/min	Injection Mode:	Split

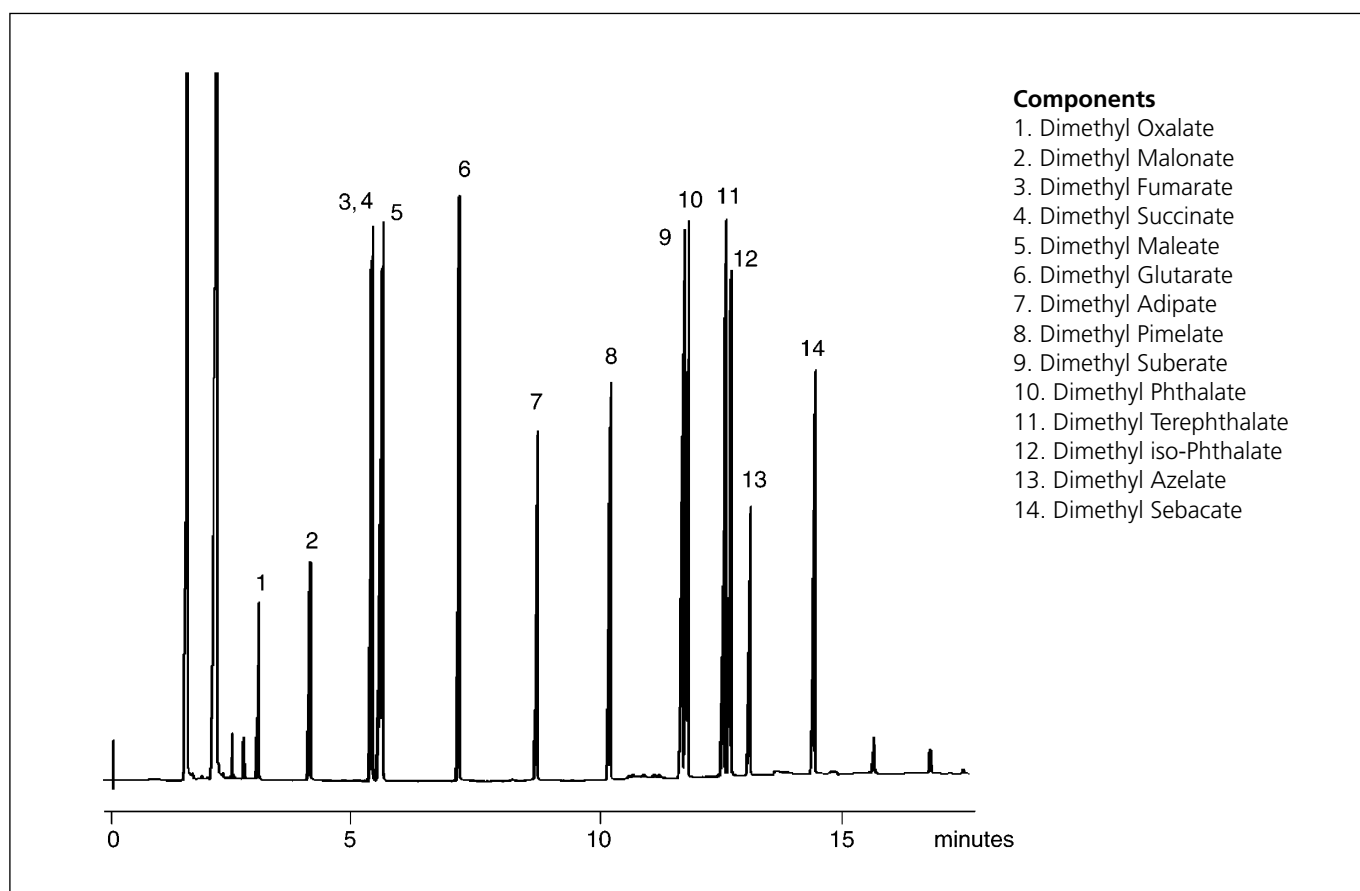


For more information contact our technical customer support team on: techsupport@sge.com

ANALYSIS OF DIMETHYL ESTERS OF DICARBOXYLIC ACIDS ON BP1

DIMETHYL ESTERS OF DICARBOXYLIC ACIDS

Column Part No.:	054047	Final Temp.:	240 °C, 0 min
Phase:	BP1, 0.25 µm film	Detector:	FID
Column:	25 m x 0.22 mm ID	Sensitivity:	64 x 10 ⁻¹² AFS
Initial Temp.:	60 °C, 0 min	Injection Mode:	Split
Rate:	10 °C/min		

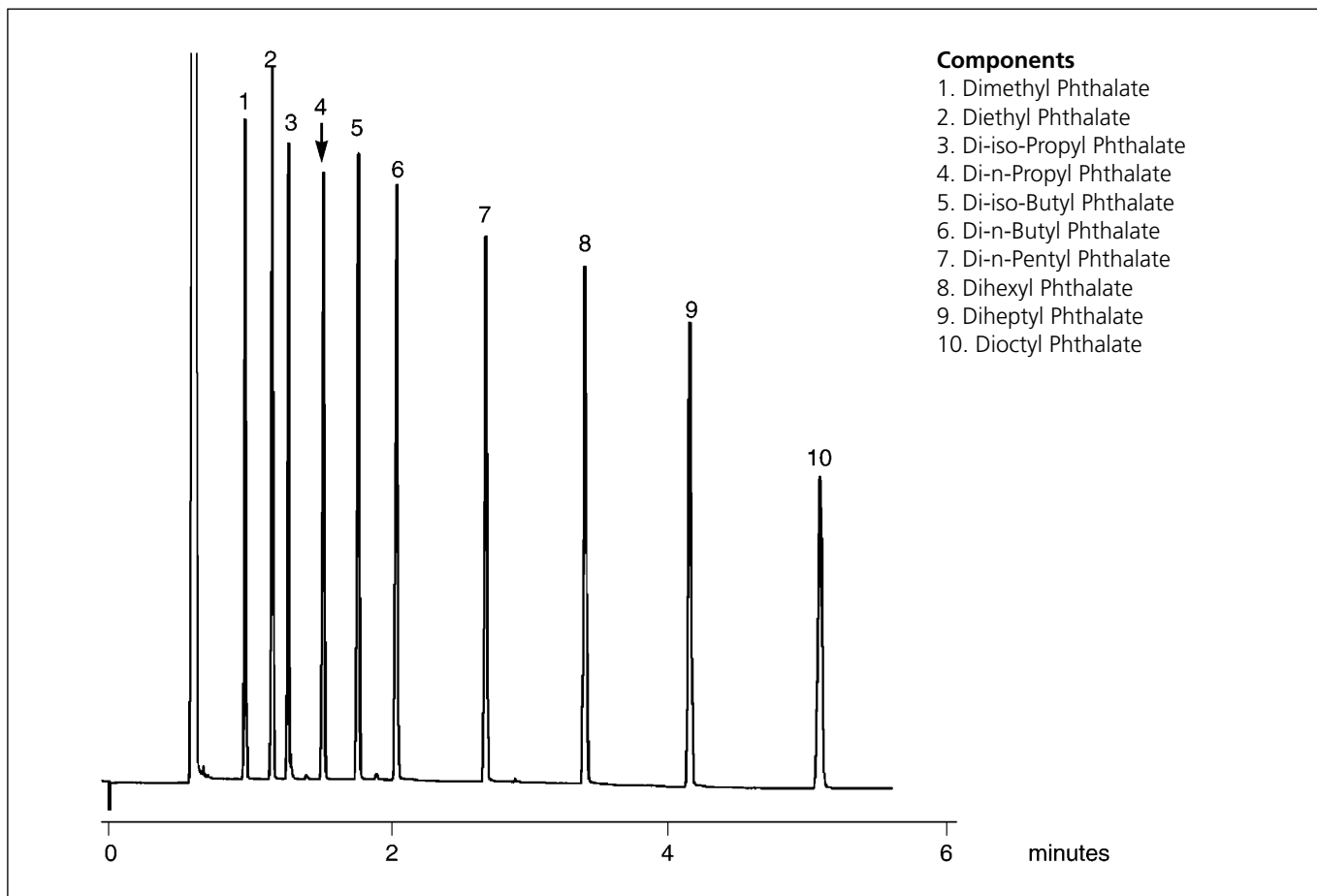


For more information contact our technical customer support team on: techsupport@sge.com

ANALYSIS OF PHTHALATE ESTERS ON BP1

PHTHALATE ESTERS

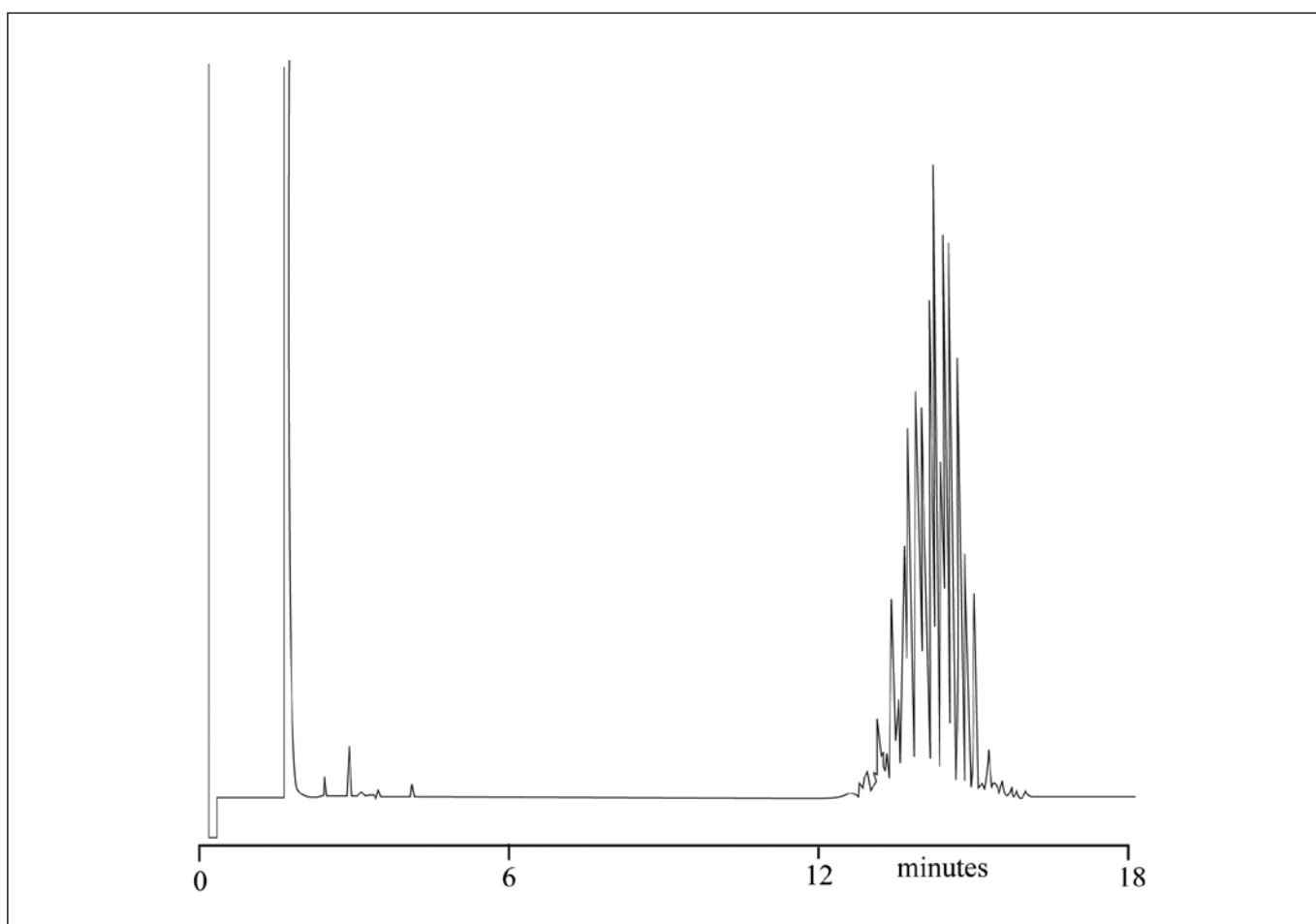
Column Part No.:	054046	Final Temp.:	280 °C, 0 min
Phase:	BP1, 0.25 µm film	Detector:	FID
Column:	12 m x 0.22 mm ID	Sensitivity:	128 x 10 ⁻¹² AFS
Initial Temp.:	200 °C, 0min	Injection Mode:	Split
Rate:	20 °C/min		



For more information contact our technical customer support team on: techsupport@sge.com

ANALYSIS OF DINONYL PHTHALATES ON BPX5

Column Part No.:	054119	Rate 2:	5 °C/min.
Phase:	BPX5, 0.25 µm film	Final Temp.:	340 °C,
Column:	25 m x 0.32 mm ID	Injector Temp.:	280 °C
Initial Temp.:	100 °C,	Injector Mode:	Split (50:1)
Rate 1:	20 °C/min	Detector:	FID, 360 °C
Temp 2:	260 °C	Carrier Gas:	He, 7 psi



For more information contact our technical customer support team on: techsupport@sge.com

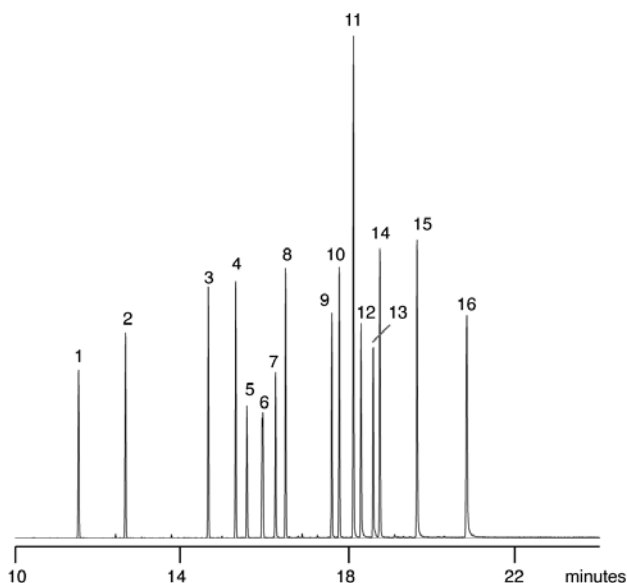
ANALYSIS OF ENDOCRINE DISRUPTOR PHTHALATE ESTERS ON BPX5

BXP5 column

Column Part No.: 054101
Phase: BPX5, 0.25 µm film
Column: 30 m x 0.25 mm ID

Components

- | | |
|--------------------------------------|----------------------------------|
| 1. Dimethyl phthalate | 8. Diamyl phthalate |
| 2. Diethyl phthalate | 9. Dihexyl phthalate |
| 3. Diisobutyl phthalate | 10. Butylbenzyl phthalate |
| 4. Di-n-butyl phthalate | 11. Hexyl-2-ethylhexyl phthalate |
| 5. bis (2-Methoxyethyl) phthalate | 12. bis (2-Ethylhexyl) phthalate |
| 6. bis (4-Methyl-2-pentyl) phthalate | 13. Dicyclohexyl phthalate |
| 7. bis (2-Ethoxyethyl) phthalate | 14. bis (2-Ethylhexyl) phthalate |
| | 15. Di-n-octyl phthalate |
| | 16. Di-n-nonyl phthalate |



*Sample Description: 8061 Phthalate esters mix
250 mg/L, <1 ng per component on column*

Sample Introduction:

Split / Splitless: Splitless
 Injector Temp.: 240 °C
 Injection Volume: 0.5 µL
 Autosampler Syringe: 5 µL Fixed Needle

Septa:

Part No. 001810
 Auto-Sep T™
 Part No. 041882
 Injection Type: Split
 Purge On Time: NA
 Purge On (Spilt) Vent: 89.8 mL/min
 Split Ratio: 150 to 1
 Liner Type: Single taper
 Part No. 092003

Pressure/Flow Values:

Carrier Gas: Helium
 Constant Flow: On
 Pressure: 2.22 psi
 Column Flow: 0.6 mL/min
 Linear Velocity: 28 cm/sec at 40 °C

Oven Parameters:

Initial Temp.: 40 °C
 Initial Time: 1 min
 Rate 1: 15° C/min
 Final Temp. 1: 310 °C
 Hold Time: 5 min
 Run Time: 24.00 min

Detector Parameters:

Detector Type: MSD. Interface 280 °C,
 Source 230 °C,
 Quad 150 °C

For more information contact our technical customer support team on: techsupport@sge.com