

BPX35

35% more innovation

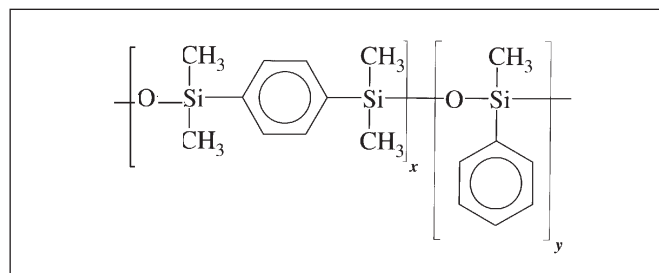
A new direction in Medium Polarity Stationary Phases

INTRODUCTION

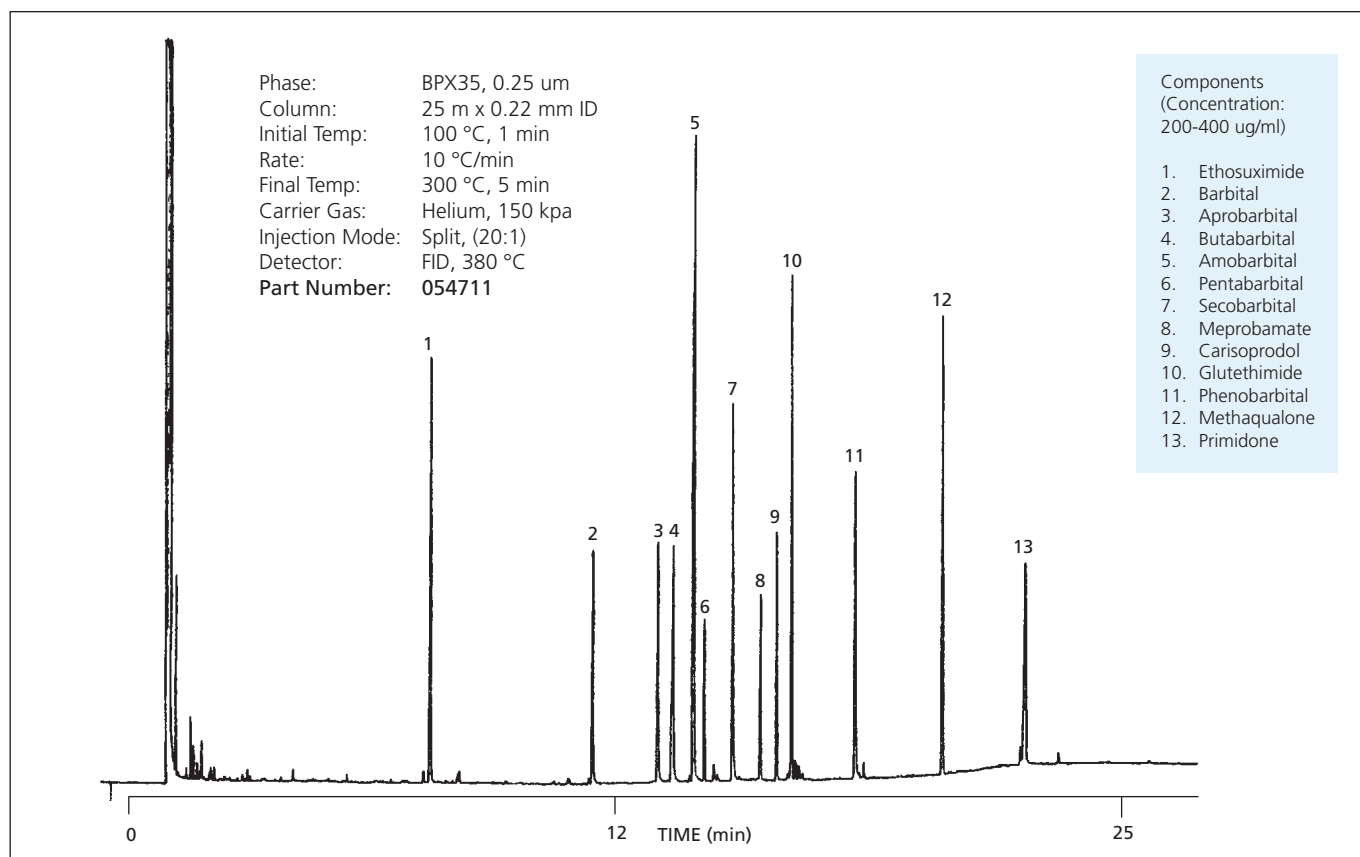
- Suitable for a wide range of applications (pharmaceuticals to herbicides)
- Mid Polarity
- Modified silphenylene siloxane backbone for high thermal stability
- Polarity equivalent to 35 % Phenyl polysiloxane
- Low column bleed
- Compatible with all commonly used detector systems
- Close equivalent to USP Phase G42

BPX35 is a medium polarity phase which has the equivalent polarity to 35 % phenylsiloxane but the thermal stability of a column more commonly used for high temperature petroleum distillations. Improved thermal stability (max.

temp. 360 °C) and excellent chemical stability ensure a wide range of applications are possible. With a polarity similar to the liquid phases OV-1701 and OV-11, this phase is well suited for analysing pesticides, herbicides and other environmental sensitive compounds. The high degree of chemical inertness of the BPX35 phase also allows the analysis of a wide range of both acidic and basic compounds common to medical/forensic areas.



Methylphenylsiloxane - silphenylene polymer

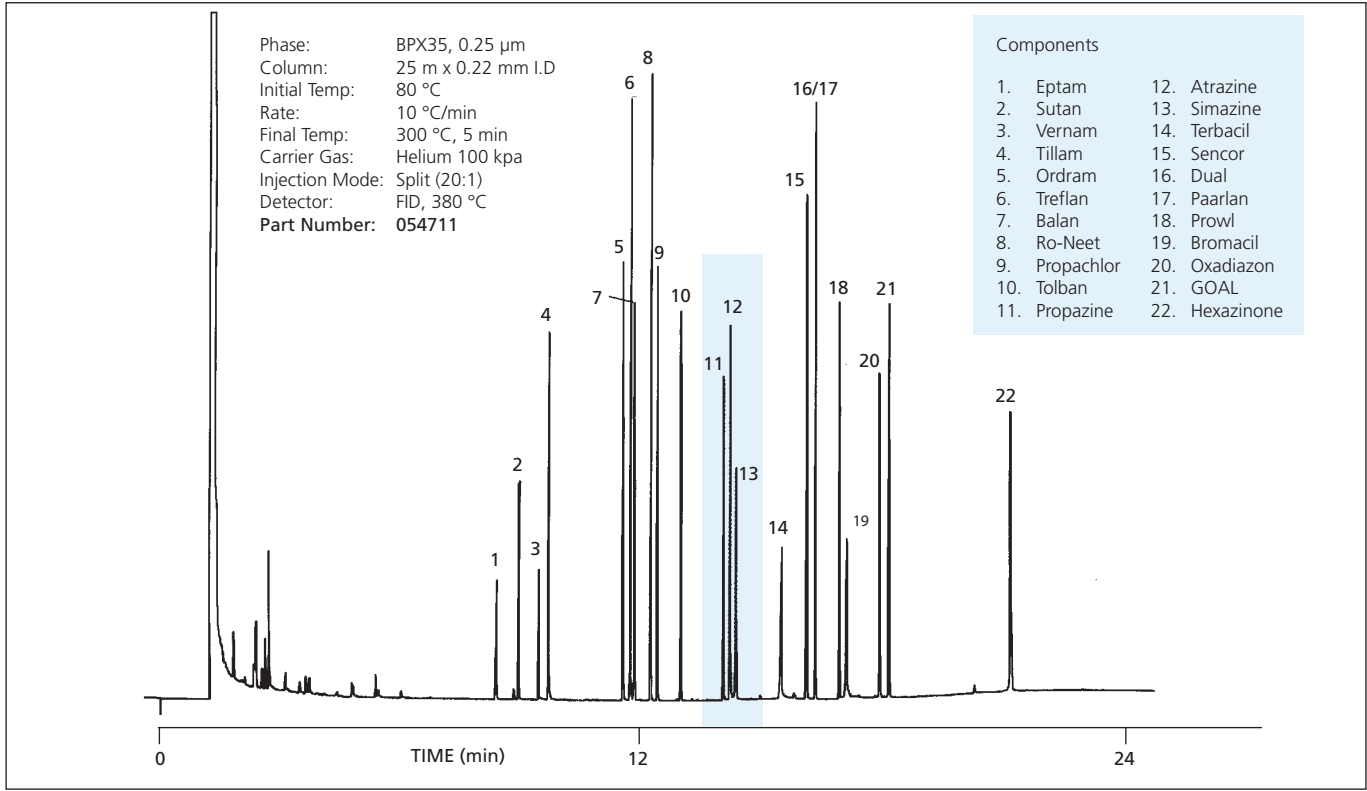


Acid/Neutral drugs

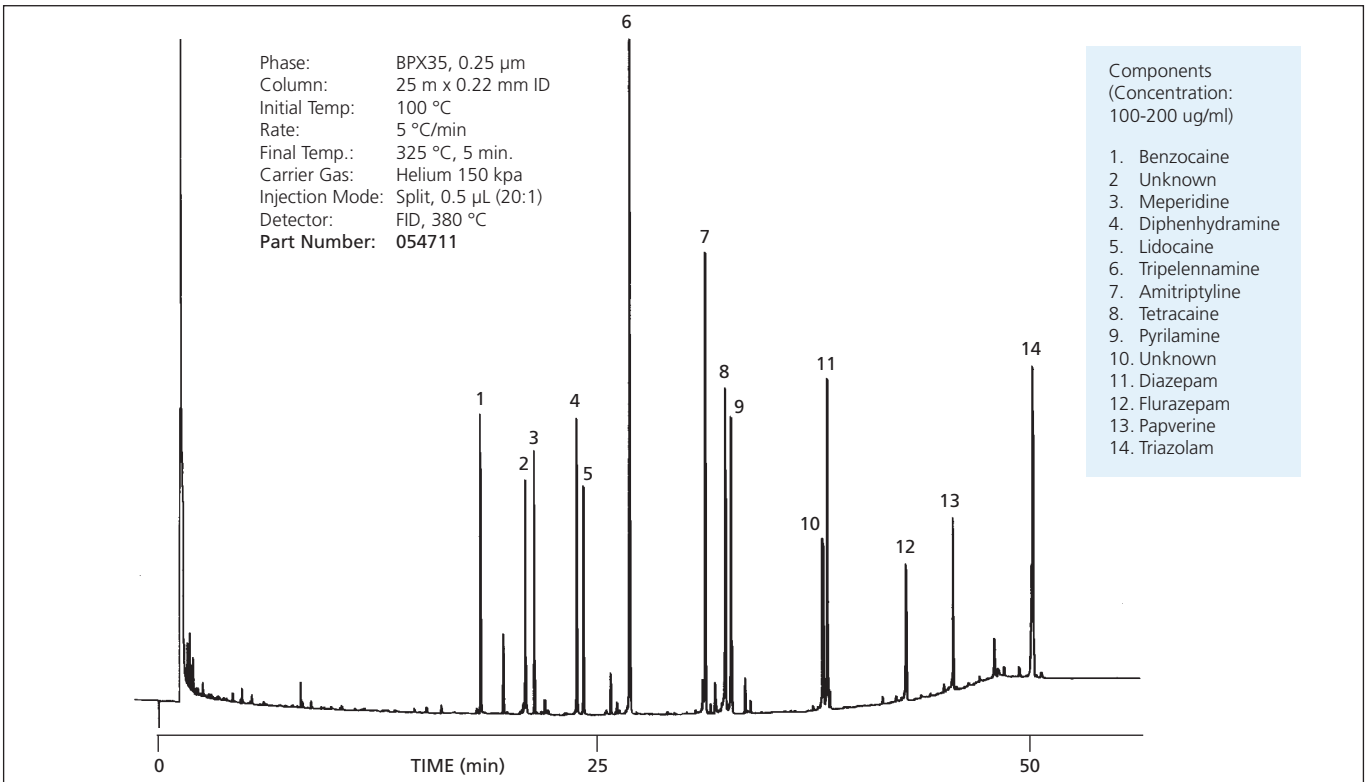
PRODUCT DATA

With improved thermal stability and chemical inertness the BPX35 makes light work of analysing a variety of both acidic and basic drugs. Low column bleed and extended thermal range of the BPX35 ensures that even trace amounts of a

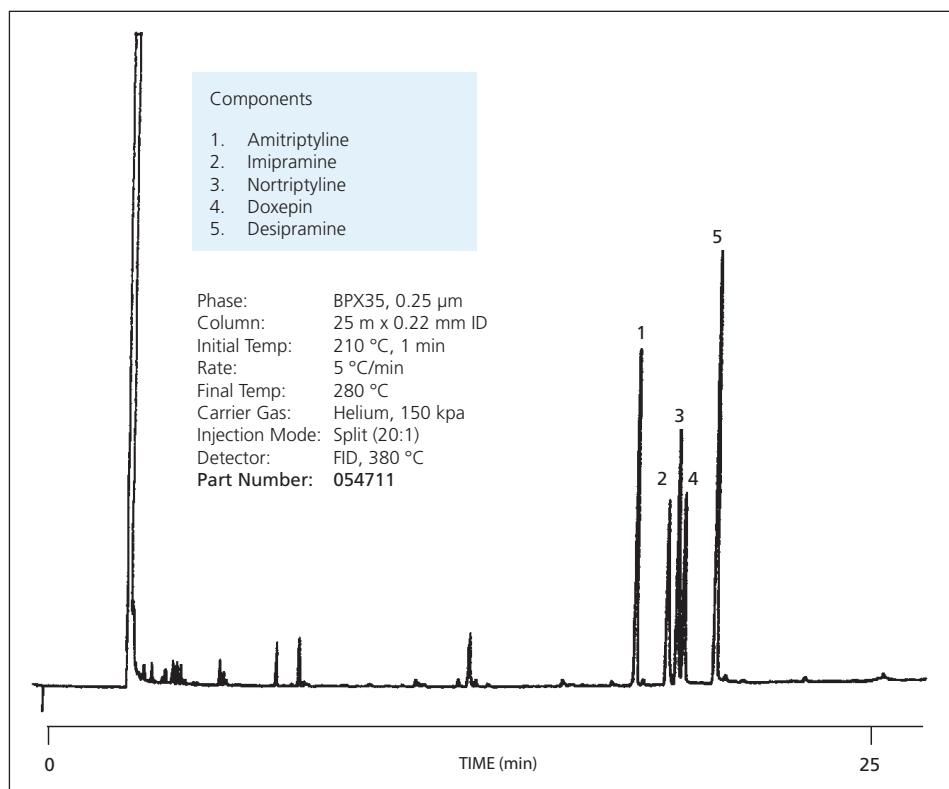
drug can be detected and quantified eluting at either 50 °C or 360 °C.



Herbicides



Basic drugs



Tricyclic antidepressants

RECOMMENDED APPLICATIONS FOR BPX35

- Confirmation column
- Dual Column Confirmation (BP1/BPX35, BPX5/BPX35, BP5/BPX35)
- Environmental Sensitive Compounds
 - Herbicides*
 - Pesticides*
 - Aroclors*
- Pharmaceuticals
- PNA's
- Amines (general)
- Alcohols (general)
- Solvents
- Foods & Flavours

ORDERING INFORMATION - BPX35

ID (mm)	Film Thickness (µm)	10 metre Part No.	15 metre Part No.	25 metre Part No.	30 metre Part No.	50 metre Part No.	60 metre Part No.
0.1	0.1	054699	-	-	-	-	-
0.22	0.25	-	054713	054711	054714	054712	-
0.22	0.5	-	-	-	-	-	-
0.25	0.25	-	054700	-	054701	-	054702
0.25	0.5	-	-	-	0547025	-	-
0.25	1	-	054703	-	054704	-	054705
0.32	0.25	-	054723	054721	054724	054722	054725
0.32	0.5	-	054718	-	054158	-	-
0.32	1	-	054716	-	054717	-	-
0.53	0.5	-	054734	-	054735	-	-
0.53	1	-	054736	-	054737	-	-

Trademarks: DB - J & W Scientific; Rtx - Testek Corp.; AT - Altech; SPB - Supelco Inc.; OV - Ohio Valley Speciality Chemical Co

For more information contact our technical customer support team on: techsupport@sge.com

AUSTRALIA & PACIFIC REGION

SGE Analytical Science Pty Ltd
 Toll Free: 1800 800 167
 Tel: +61 (0) 3 9837 4200
 Fax: +61 (0) 3 9874 5672
 Email: support@sge.com

CHINA

SGE Shanghai Representative Office
 Tel: +86 21 6407 9382
 Fax: +86 21 6407 9386
 Email: china@sge.com

MIDDLE EAST

SGE Gulf
 Tel: +971 6 557 3341
 Fax: +971 6 557 3541
 Email: gulfsupport@sge.com

EUROPE

SGE Europe Ltd
 European Head Office
 Toll Free: 00800 2790 8999
 Toll Free Fax: 00800 2626 2609
 Tel: +44 1908 568 844
 Fax: +44 1908 566 790
 Tel France: +33 1 69 29 80 90
 Fax France: +33 1 69 29 09 25
 Tel Germany: +49 (0) 6155 / 60746 0
 Fax Germany: +49 (0) 6155 / 60746 50
 Email: europe@sge.com

INDIA

SGE Laboratory Accessories Pvt Ltd
 Tel: +91 22 24715896
 Fax: +91 22 24716592
 Email: sgeindia@vsnl.com

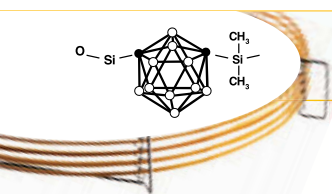
UNITED STATES OF AMERICA

SGE Incorporated
 Toll Free: (800) 945 6154
 Tel: +1 512 837 7190
 Fax: +1 512 836 9159
 Email: usa@sge.com

JAPAN

SGE Japan Inc
 Tel: +81 45 222 2885
 Fax: +81 45 222 2887
 Email: japan@sge.com

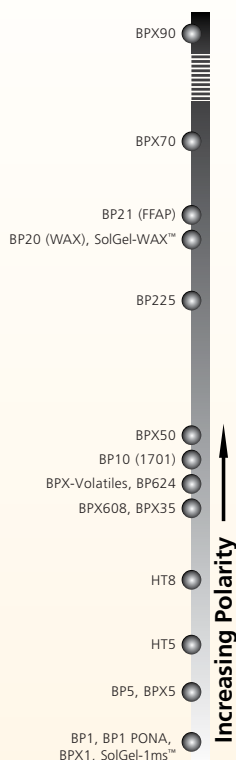





HT8

- High temperature.
- Low bleed.
- Preferred column for polychlorinated biphenyl (PCB) compounds.
- Separates PCB's on ortho ring substitution as well as boiling point.
- Ideal for environmental analysis.
- 360/370 °C upper temperature limit.
- Unique high temperature phase suited for the analysis of persistent organic pollutants (POPs).

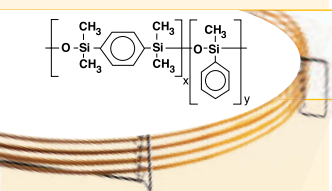
GC Columns and Applications



Especially Suitable for this Industry:	 Environment
Application Areas:	PCB congener analyses, nitro-substituted aromatics, polynuclear aromatic hydrocarbons, pesticides/herbicides. Application ARO08.
Suitable Replacement for:	No equivalents, unique ultra high temperature column.





ID (mm)	Film Thickness (µm)	Length (m)	Temperature Limits (°C)	Part No.
0.1	0.1	10	-20 to 360/370	054690
0.22	0.25	12	-20 to 360/370	054674
0.22	0.25	25	-20 to 360/370	054675
0.22	0.25	50	-20 to 360/370	054676
0.25	0.25	30	-20 to 360/370	054677
0.25	0.25	60	-20 to 360/370	054683
0.32	0.25	12	-20 to 360/370	054679
0.32	0.25	25	-20 to 360/370	054680
0.32	0.25	50	-20 to 360/370	054681
0.32	0.25	60	-20 to 360/370	054682
0.53	0.5	12	-20 to 360/370	054684
0.53	0.5	25	-20 to 360/370	054685

GC Capillary Columns | 35% Phenyl Polysilphenylene-siloxane



BPX35

- Mid polarity column.
- Ideal for confirmational analysis.
- Inert.
- Equivalent to USP phase G42.
- High temperature.
- Very low bleed.
- Pharmaceutical specialist.
- 330/360 °C upper temperature limit.
- Bonded and cross-linked.
- Able to be solvent rinsed.

Especially Suitable for these Industries:	    Pharmaceuticals Environment Food Forensics
Application Areas:	Environmental analyses, pesticides/herbicides, drugs of abuse, pharmaceuticals, polynuclear aromatic hydrocarbons, GC/MS applications. Applications ENV57, ENV04 AMI09, ALC09, SOL25, PHA14, PHA09
Suitable Replacement for:	DB-35, DB-35ms, Rtx-35, HP-35, HP-35MS, SPB-35, MDN-35.

BPX35

ID (mm)	Film Thickness (µm)	Length (m)	Temperature Limits (°C)	Part No.
0.1	0.1	10	10 to 330/360	054699
0.22	0.25	15	10 to 330/360	054713
0.22	0.25	25	10 to 330/360	054711
0.22	0.25	30	10 to 330/360	054714
0.22	0.25	50	10 to 330/360	054712
0.25	0.25	15	10 to 330/360	054700
0.25	1	15	10 to 330/360	054703
0.25	0.25	30	10 to 330/360	054701
0.25	0.5	30	10 to 330/360	0547025
0.25	1	30	10 to 330/360	054704
0.25	0.25	60	10 to 330/360	054702
0.25	1	60	10 to 330/360	054705
0.32	0.25	15	10 to 330/360	054723
0.32	0.5	15	10 to 330/360	054718
0.32	1	15	10 to 330/360	054716
0.32	0.25	25	10 to 330/360	054721
0.32	0.25	30	10 to 330/360	054724
0.32	0.5	30	10 to 330/360	0547158
0.32	1	30	10 to 330/360	054717
0.32	0.25	50	10 to 330/360	054722
0.53	0.5	15	10 to 330/360	054734
0.53	1	15	10 to 330/360	054736
0.53	0.5	30	10 to 330/360	054735
0.53	1	30	10 to 330/360	054737

GC Columns and Applications

Expert Tip :


When peak shape deteriorates, replace the liner immediately and cut 30cm from the front end of the column.



GC Capillary Columns | 35% Phenyl Polysilphenylene-siloxane

BPX608

- Optimized for ECD.
- Ideal for organochlorine, pesticides and herbicides analysis.
- Maximum temperature 370 °C.

Especially Suitable for these Industries:	 Environment
Application Areas:	Environmental analyses, EPA 608, pesticides/herbicides.
Operating Temperature	10 °C to 360/370 °C.
Suitable Replacement for:	DB-608, Rtx-35, SPB-608, HP-35, ZB-35.

ID (mm)	Film Thickness (µm)	Length (m)	Temperature Limits (°C)	Part No.
0.32	0.4	25	10 to 360/370	054823

For your instrument specific septa see the Instrument Quick Pick Pages pages 167-180.

