

Columns for Polymer-based Reversed Phase Chromatography (ODP2 HP)

Please refer to “Comparison of the Features Among Shodex Reverse Phase Chromatography (RPC) Columns” on page 6 and 7 for features.

Standard columns

Product Code	Product Name	Plate Number (TP/column)	Functional Group	Particle Size (μm)	Pore Size (Å)	Column Size (mm) I.D. x Length	Shipping Solvent
F7622001	ODP2 HP-4B	≥ 3,500	-	5	40	4.6 x 50	H ₂ O/CH ₃ CN=55/45
F7622002	ODP2 HP-4D	≥ 13,000	-	5	40	4.6 x 150	H ₂ O/CH ₃ CN=55/45
F7622003	ODP2 HP-4E	≥ 17,000	-	5	40	4.6 x 250	H ₂ O/CH ₃ CN=55/45
F6714010	ODP2 HPG-4A	(guard column)	-	5	-	4.6 x 10	H ₂ O/CH ₃ CN=55/45
F7622004	ODP2 HP-2B	≥ 3,000	-	5	40	2.0 x 50	H ₂ O/CH ₃ CN=55/45
F7622005	ODP2 HP-2D	≥ 7,000	-	5	40	2.0 x 150	H ₂ O/CH ₃ CN=55/45
F6714011	ODP2 HPG-2A	(guard column)	-	5	-	2.0 x 10	H ₂ O/CH ₃ CN=55/45

Base Material : Polyhydroxymethacrylate

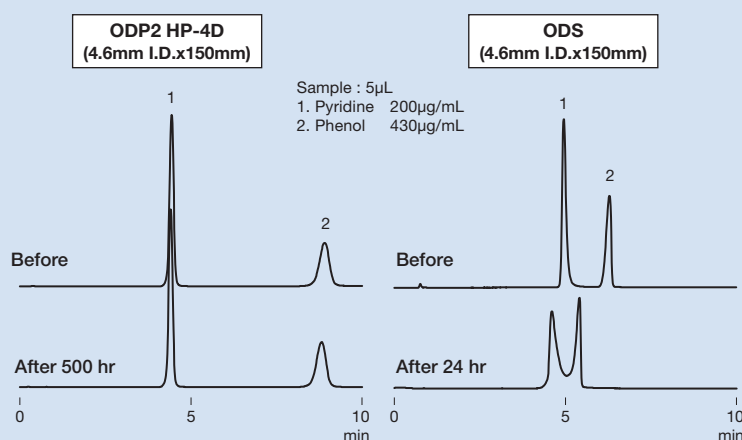
3mm I.D columns [Customized columns]

Product Code	Product Name	Functional Group	Particle Size (μm)	Pore Size (Å)	Column Size (mm) I.D. x Length
F7622006	ODP2 HP-3B	-	5	40	3.0 x 50
F7622007	ODP2 HP-3D	-	5	40	3.0 x 150
F6714014	ODP2 HPG-3A (guard column)	-	5	-	3.0 x 10

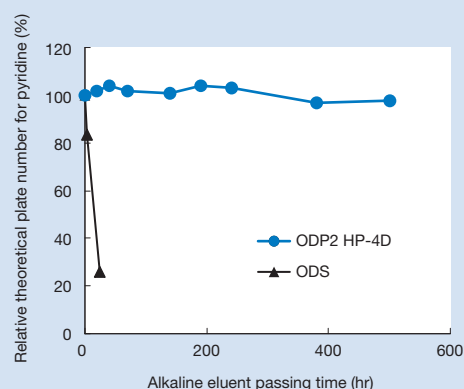
Base Material : Polyhydroxymethacrylate

Tolerance of ODP2 HP for alkaline condition

Comparison between the chromatograms obtained before and after passing alkaline eluent



Correlation between alkaline eluent passing time and relative theoretical plate number



Analysis condition

Column : Shodex ODP2 HP-4D
 ODS from other manufacturer
 Eluent : H₂O/CH₃OH=70/30
 Flow rate : 1.0mL/min
 Detector : UV (254nm)
 Column temp. : 40°C

Eluent passing conditions for alkali tolerance test

Column : Shodex ODP2 HP-4D
 ODS from other manufacturer
 Eluent : 10mM Sodium phosphate buffer (pH12)
 /CH₃CN=45/55
 Flow rate : 0.6mL/min
 Column temp. : 30°C

