

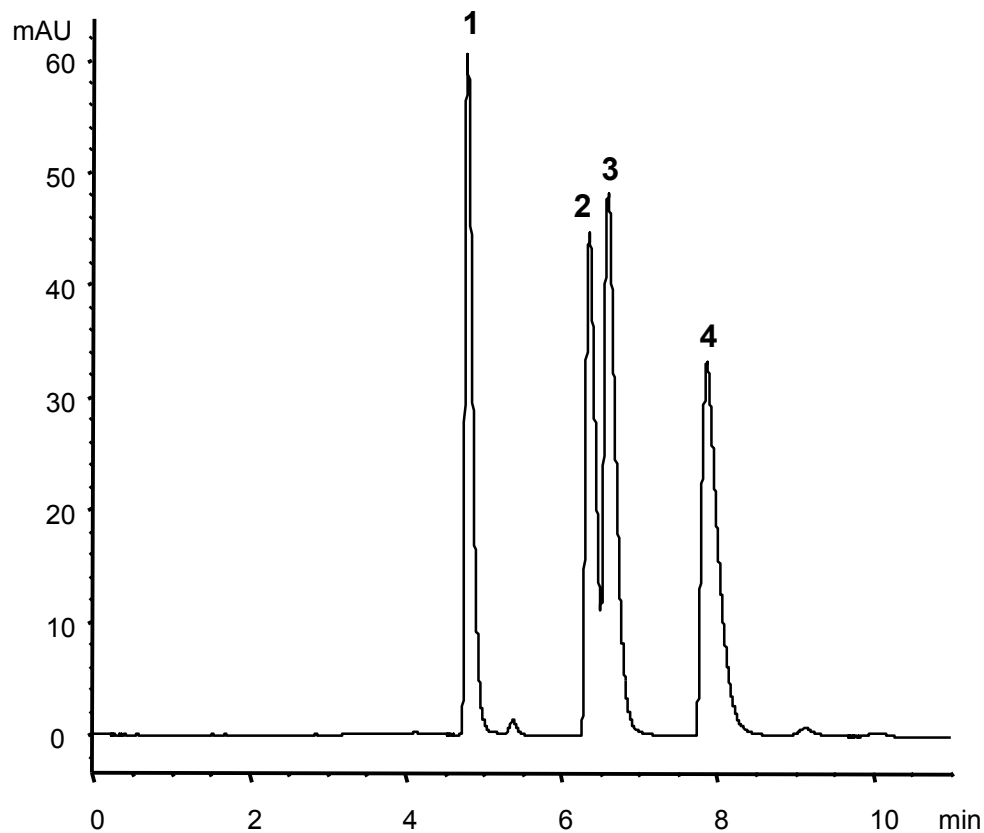
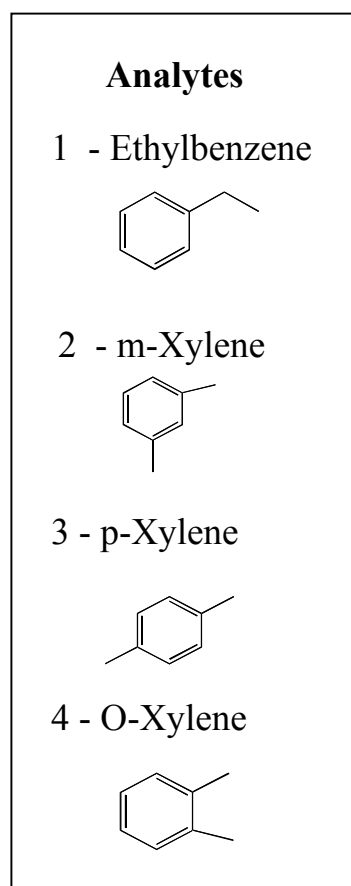


ZirChrom®

Technical Bulletin #134

... For Peak Performance

Isomer Separation on ZirChrom®-CARB



LC Conditions

Column: A: ZirChrom®-CARB, 150 × 4.6 mm;

Mobile Phase: 50/50 A/B

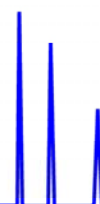
A: Acetonitrile

B: Water

Flow rate: 1.0 mL/min.

Temperature: 30 °C

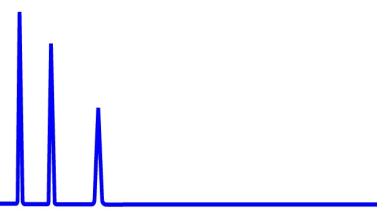
Detection: 254 nm





ZirChrom®

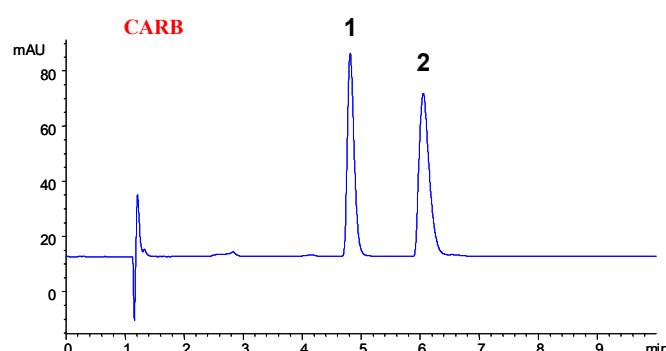
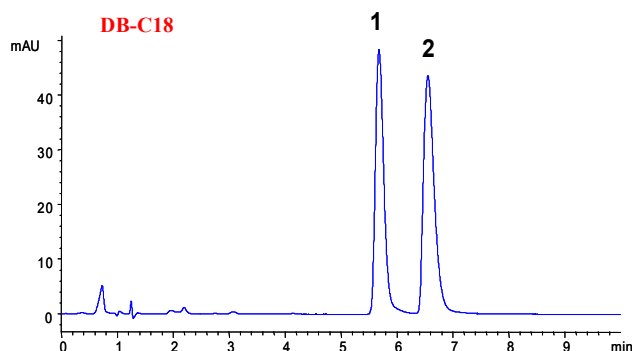
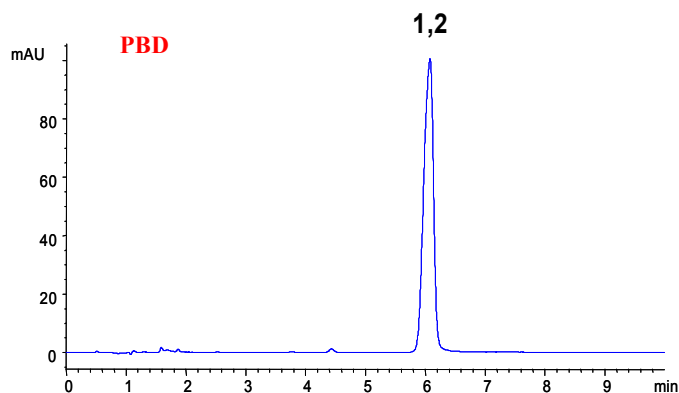
Technical
Bulletin #232



... For Peak Performance

Selectivity Comparison: PBD, DB-C18 & CARB

Analytes
1 - Ethylbenzene
2 - p-Xylene



LC Conditions

Column: PBD, **DIAMOND BOND™**18, CARB, 100 × 4.6 mm

Mobile Phase: (PBD) 35/65, (DB-C18) 37.5/57.5/5,
(CARB) 32.5/67.5 A/B/C

A: ACN
B: Water
C: THF

Flow rate: 1.0 mL/min.
Temperature: 30 °C (PBD)
60 °C (DB-C18)
60 °C (CARB)
Injection: 5 µL
Detection: 254 nm

